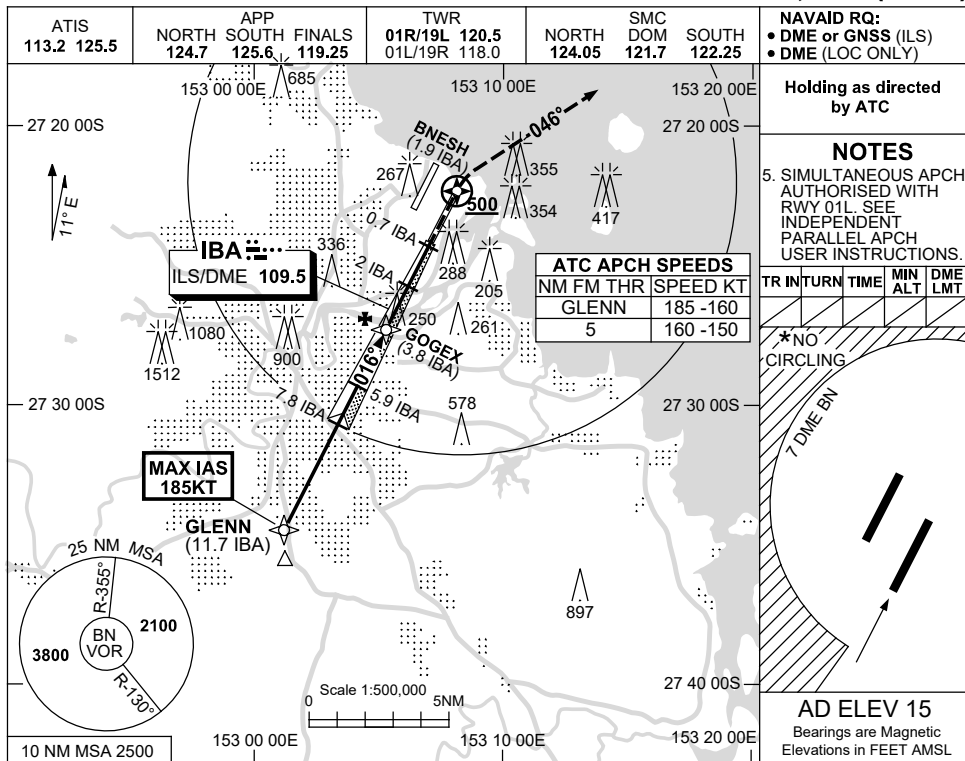


USE QNH

ILS or LOC RWY 01R  
**BRISBANE, QLD (YBBN)**

21 MAR 2024



**Holding as directed by ATC**

**NOTES**

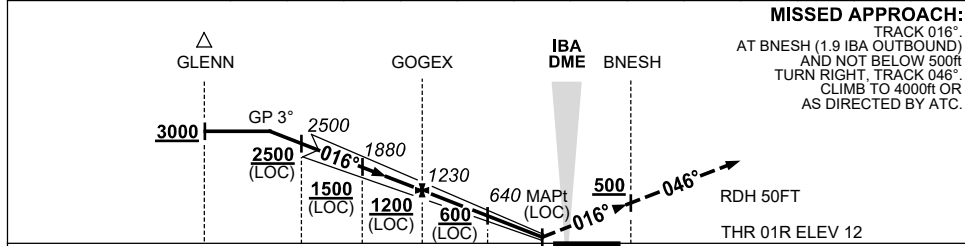
5. SIMULTANEOUS APCH AUTHORISED WITH RWY 01L. SEE INDEPENDENT PARALLEL APCH USER INSTRUCTIONS.

TR	INTURN	TIME	MIN ALT	DME LMT

\*NO CIRCLING

**AD ELEV 15**  
 Bearings are Magnetic  
 Elevations in FEET AMSL

NM TO IBA DME	9.4	9	7.8	7	6	5.9	5	3.8	3	2	1.6		
ALT (3° APCH PATH)	3000	2870	2500	2240	1920	1880	1600	1230	960	640	520		



**MISSED APPROACH:**  
 TRACK 016°  
 AT BNESH (1.9 IBA OUTBOUND)  
 AND NOT BELOW 500ft  
 TURN RIGHT, TRACK 046°  
 CLIMB TO 4000ft OR  
 AS DIRECTED BY ATC.

RDH 50FT  
 THR 01R ELEV 12

NM TO IBA DME	11.7	7.8	5.9	3.8	2	0.7	0	1.9
NM TO THR 01R	11.5	7.6	5.7	3.7	1.9	0.5	0	2.1

- NOTES**
- MAX IAS:  
 GLENN : 185KT.
  - \* 2. CAT D ACFT NO CIRCLING WEST OF 01R/19L BEYOND 7 DME BN.
  - \* 3. SPECIAL ALTN MNM 700/2.5 KM.
  4. ACFT MAY BE RADAR VECTORED TO FNA.

CATEGORY	A	B	C	D
S-I ILS		220 (208-0.8)	550 RVR	
S-I LOC		520 (505-2.0)		
CIRCLING *	650 (635-2.4)	780 (765-4.0)	850 (835-5.0)	
ALTERNATE ‡	(1135-4.4)	(1265-6.0)	(1335-7.0)	

Changes: 2NM STEP DOWN FIX, Editorial.

BBNII05-178

