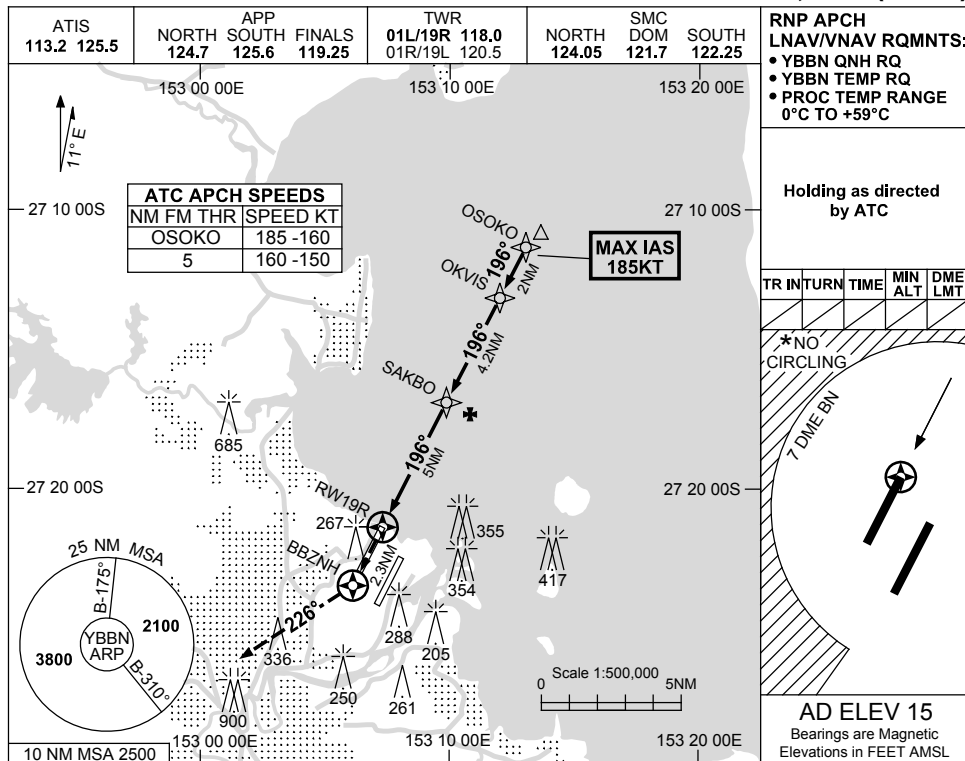


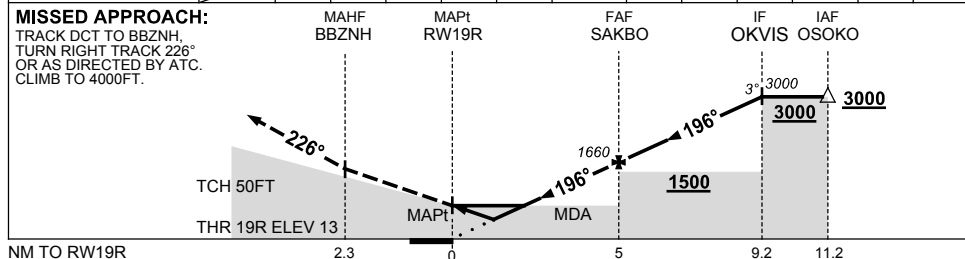
USE QNH

RNP Z RWY 19R
BRISBANE, QLD (YBBN)

23 MAR 2023



NM TO NEXT WPT	RW19R	0.9	1.2	2	3	4	SAKBO	1	2	3	OKVIS		
ALT (3° APCH PATH)		350	430	700	1020	1340	1660	1970	2290	2610	3000		



NOTES

1. MAX IAS:
INITIAL : 185KT.
- * 2. CAT D ACFT NO CIRCLING WEST OF 01R/19L BEYOND 7 DME BN.
3. ACFT MAY BE RADAR VECTORED TO OSOKO.

CATEGORY	A	B	C	D
LNAV/VNAV		350 (337-1.2)		
LNAV		430 (415-1.6)		
CIRCLING *	650 (635-2.4)		780 (765-4.0)	850 (835-5.0)
ALTERNATE	(1135-4.4)		(1265-6.0)	(1335-7.0)

Changes: VIS MINIMA.

BBNGN15-174