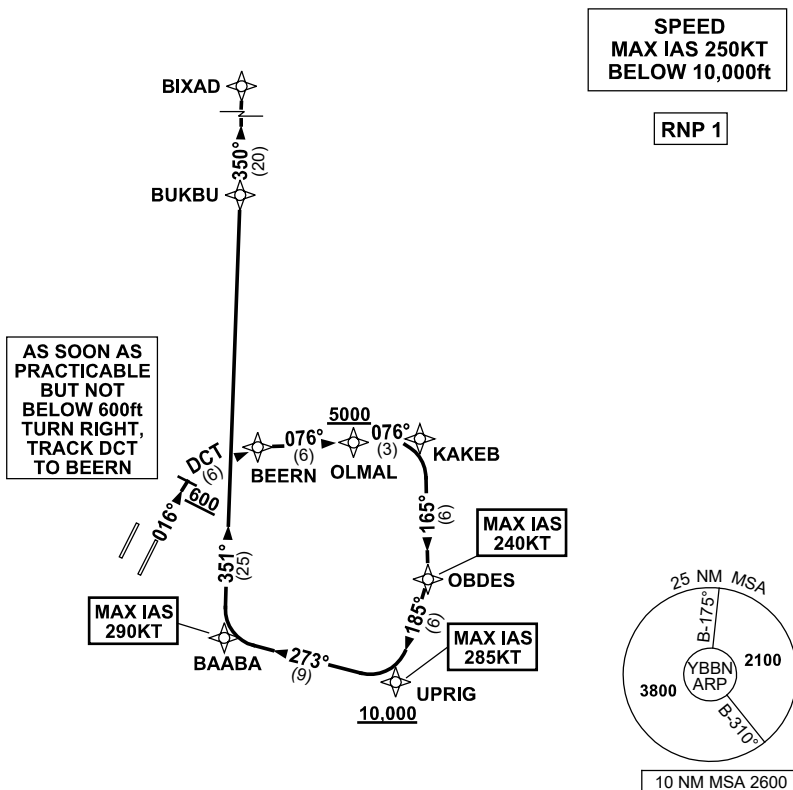


**STANDARD INSTRUMENT DEPARTURES (SID)
BIXAD TWO DEPARTURE (RNAV) RWY 01R
BRISBANE, QLD (YBBN)**

20 MAR 2025

ATIS 113.2 125.5	ACD 118.85	NORTH 124.05	SMC DOM 121.7	SOUTH 122.25	TWR 01R/19L 120.5 01L/19R 118.0	DEP 118.45 133.45	Bearings are Magnetic Elevations in FEET AMSL
---------------------	---------------	-----------------	---------------------	-----------------	---------------------------------------	----------------------	--

NOT TO SCALE



DEPARTURE: BIXAD TWO

RWY 01R

- GRAD 3.3%
- MAX IAS 240KT until OBDES
- Track 016°
- AT or ABV 600FT turn RIGHT, track DCT to BEERN
- Turn RIGHT, track 076° to OLMAL
- Cross** OLMAL AT or ABV 5000ft
(RQ GRAD TO OLMAL: 6.2%)
- Track 076° to KAKEB
- Turn RIGHT, track 165° to OBDES
- MAX IAS 285KT until UPRIG
- Turn RIGHT, track 185° to UPRIG
- Cross** UPRIG AT or ABV 10,000ft
(RQ GRAD TO UPRIG: 6.2% FM OLMAL)
- MAX IAS 290KT until BAABA
- Turn RIGHT, track 273° to BAABA
- Turn RIGHT, track 351° to BUKBU
- Track 350° to BIXAD

Changes: NEW CHART.

BBNDP25-182