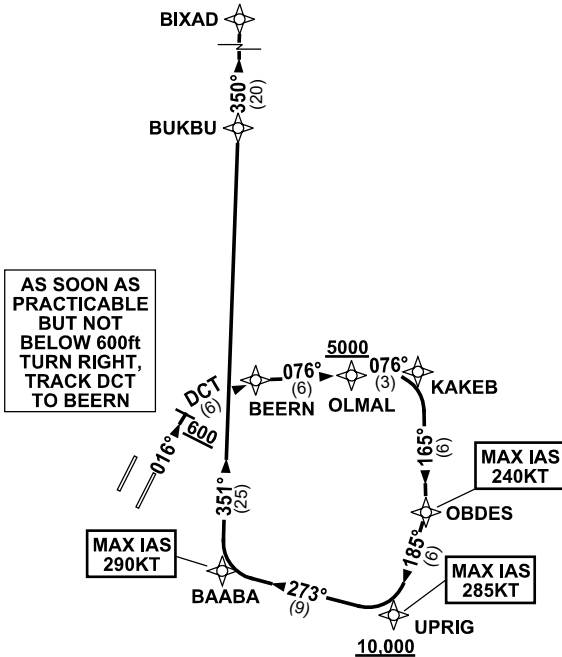


**STANDARD INSTRUMENT DEPARTURES (SID)  
BIXAD TWO DEPARTURE (RNAV) RWY 01R  
BRISBANE, QLD (YBBN)**

**20 MAR 2025**

ATIS 113.2 125.5	ACD 118.85	NORTH 124.05	SMC DOM 121.7	SOUTH 122.25	TWR 01R/19L 120.5 01L/19R 118.0	DEP 118.45 133.45	Bearings are Magnetic Elevations in FEET AMSL
---------------------	---------------	-----------------	---------------------	-----------------	---------------------------------------	----------------------	--------------------------------------------------

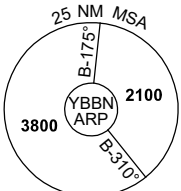
NOT TO SCALE



**SPEED  
MAX IAS 250KT  
BELOW 10,000ft**

**RNP 1**

**AS SOON AS PRACTICABLE BUT NOT BELOW 600ft TURN RIGHT, TRACK DCT TO BEERN**



10 NM MSA 2600

**DEPARTURE: BIXAD TWO**

- RWY 01R**  
GRAD 3.3%  
MAX IAS 240KT until OBDES
- Track 016°
  - AT or ABV 600FT turn RIGHT, track DCT to BEERN
  - Turn RIGHT, track 076° to OLMAL  
Cross OLMAL AT or ABV 5000ft  
(RQ GRAD TO OLMAL: 6.2%)
  - Track 076° to KAKEB
  - Turn RIGHT, track 165° to OBDES  
MAX IAS 285KT until UPRIG
  - Turn RIGHT, track 185° to UPRIG  
Cross UPRIG AT or ABV 10,000ft  
(RQ GRAD TO UPRIG: 6.2% FM OLMAL)
  - MAX IAS 290KT until BAABA
  - Turn RIGHT, track 273° to BAABA
  - Turn RIGHT, track 351° to BUKBU
  - Track 350° to BIXAD

Changes: NEW CHART.

BBNDP25-182