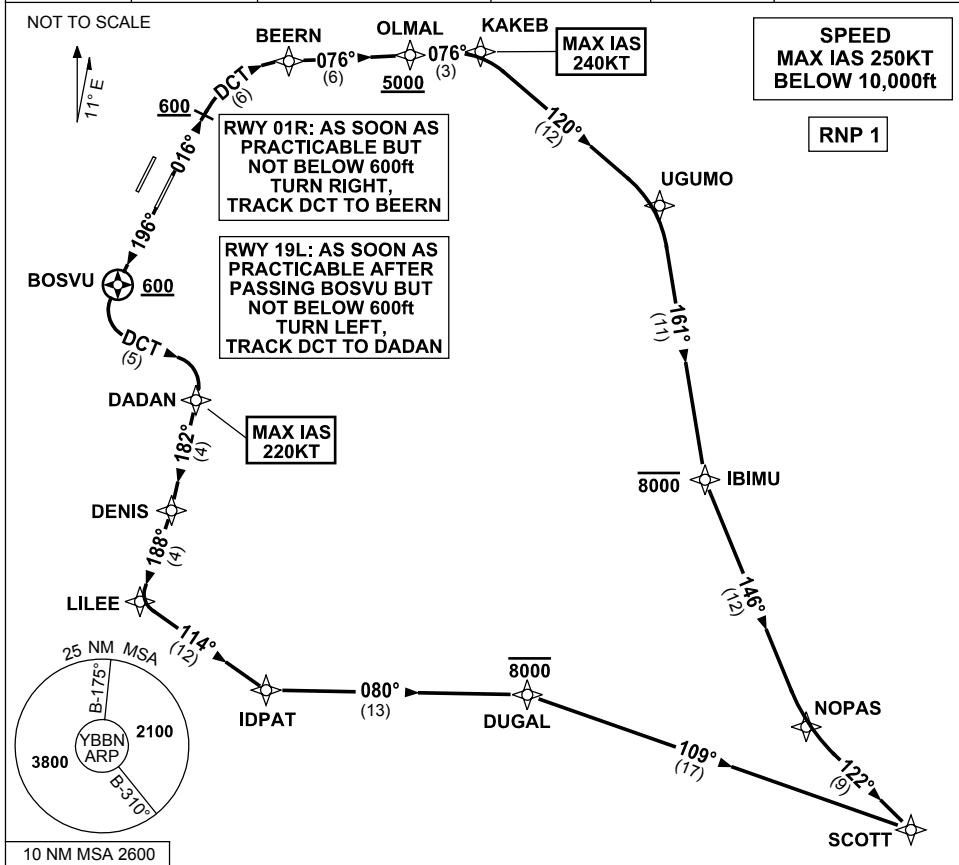


**STANDARD INSTRUMENT DEPARTURES (SID)
SCOTT FOUR DEPARTURE (RNAV) RWY 01R/19L
BRISBANE, QLD (YBBN)**

20 MAR 2025

ATIS 113.2 125.5	ACD 118.85	NORTH 124.05	SMC DOM 121.7	SOUTH 122.25	TWR 01R/19L 120.5 01L/19R 118.0	DEP 118.45	Bearings are Magnetic Elevations in FEET AMSL
---------------------	---------------	-----------------	---------------------	-----------------	---------------------------------------	---------------	--



Changes: MSA, RWY 19L INSTRUCTIONS, Editorial.

BBNDP24-182