

**STANDARD INSTRUMENT DEPARTURES (SID)
GUMKI TWO DEPARTURE (RNAV) RWY 01R/19L
BRISBANE, QLD (YBBN)**

20 MAR 2025

ATIS 113.2 125.5	ACD 118.85	NORTH 124.05	SMC DOM 121.7	SOUTH 122.25	TWR 01R/19L 120.5 01L/19R 118.0	DEP 118.45	Bearings are Magnetic Elevations in FEET AMSL
---------------------	---------------	-----------------	---------------------	-----------------	---------------------------------------	---------------	--

NOT TO SCALE



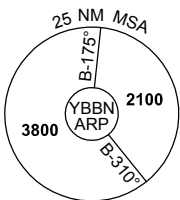
**SPEED
MAX IAS 250KT
BELOW 10,000ft**

**MAX IAS
240KT**

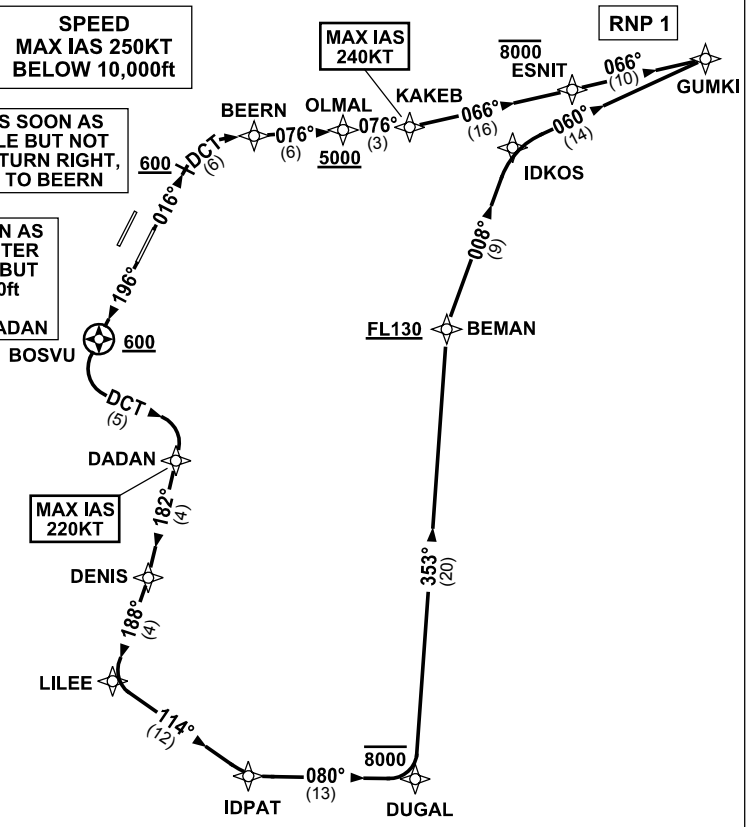
RNP 1

**RWY 01R: AS SOON AS
PRACTICABLE BUT NOT
BELOW 600ft TURN RIGHT,
TRACK DCT TO BEERN**

**RWY 19L: AS SOON AS
PRACTICABLE AFTER
PASSING BOSVU BUT
NOT BELOW 600ft
TURN LEFT,
TRACK DCT TO DADAN**



10 NM MSA 2600



DEPARTURE: GUMKI TWO

RWY 01R

- GRAD 3.3%
- MAX IAS 240KT until KAKEB
- Track 016°
- AT or ABV 600ft turn RIGHT, track DCT to BEERN
- Turn RIGHT, track 076° to OLMAL
Cross OLMAL AT or ABV 5000ft (RQ GRAD TO OLMAL: 6.2%)
- Track 076° to KAKEB
- Turn LEFT, track 066° to ESNIT
Cross ESNIT AT or BLW 8000ft
- Track 066° to GUMKI

RWY 19L

- GRAD 3.3%
- MAX IAS 220KT until DADAN
- Track 196°
- AT or ABV 600ft, but not before BOSVU, turn LEFT, track DCT to DADAN
- Turn RIGHT, track 182° to DENIS
- Turn RIGHT, track 188° to LILEE
- Turn LEFT, track 114° to IDPAT
- Turn LEFT, track 080° to DUGAL
Cross DUGAL AT or BLW 8000ft
- Turn LEFT, track 353° to BEMAN
Cross BEMAN AT or ABV FL130 (RQ GRAD TO BEMAN: 3.8%)
- Turn RIGHT, track 008° to IDKOS
- Turn RIGHT, track 060° to GUMKI

Changes: MSA, RWY 19L INSTRUCTIONS, Editorial.

