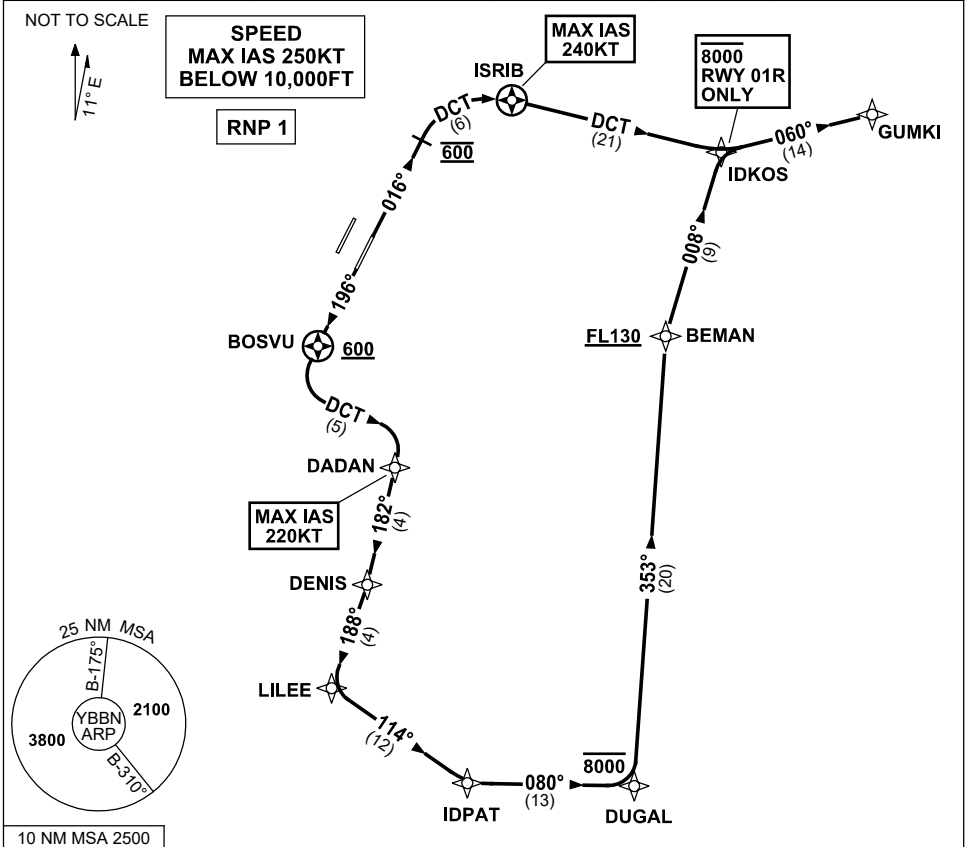


**STANDARD INSTRUMENT DEPARTURES (SID)  
GUMKI ONE DEPARTURE (RNAV) RWY 01R/19L  
BRISBANE, QLD (YBBN)**

9 SEP 2021

ATIS 113.2 125.5	ACD 118.85	NORTH 124.05	SMC DOM 121.7	SOUTH 122.25	TWR 01R/19L 120.5 01L/19R 118.0	DEP 118.45	Bearings are Magnetic Elevations in FEET AMSL
---------------------	---------------	-----------------	---------------------	-----------------	---------------------------------------	---------------	--



**DEPARTURE: GUMKI ONE**

**RWY 01R**

GRAD 3.3% (4.4% TO 4000FT)  
MAX IAS 240KT until ISRIB

- Track 016°
- At 600FT turn RIGHT, track DCT to ISRIB
- Turn RIGHT, track DCT to IDRIB
- **Cross IDRIB AT or BLW 8000FT**
- Turn LEFT, track 060° to GUMKI

**RWY 19L**

GRAD 3.3% (5.0% TO 3000FT)  
MAX IAS 220KT until DADAN

- Track 196°
- After passing BOSVU **AND** 600FT turn LEFT, track DCT to DADAN
- Turn RIGHT, track 182° to DENIS
- Turn RIGHT, track 188° to LILEE
- Turn LEFT, track 114° to IDPAT
- Turn LEFT, track 080° to DUGAL
- **Cross DUGAL AT or BLW 8000FT**
- Turn LEFT, track 353° to BEMAN
- **Cross BEMAN AT or ABV FL130 (RQ GRAD TO BEMAN: 3.8%)**
- Turn RIGHT, track 008° to IDRIB
- Turn RIGHT, track 060° to GUMKI

Changes: Editorial.

BBNDP23-168