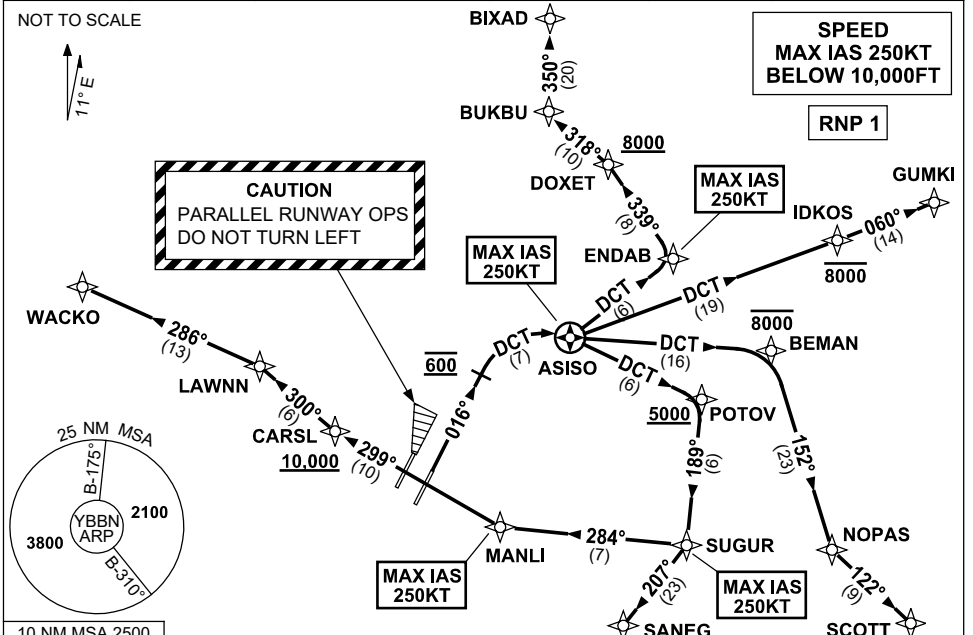


**STANDARD INSTRUMENT DEPARTURES (SID)
ASISO ONE DEPARTURE (RNAV) RWY 01R
BRISBANE, QLD (YBBN)**

9 SEP 2021

ATIS 113.2 125.5	ACD 118.85	NORTH 124.05	SMC DOM 121.7	SOUTH 122.25	TWR 01R/19L 120.5 01L/19R 118.0	DEP 118.45	Bearings are Magnetic Elevations in FEET AMSL
---------------------	---------------	-----------------	---------------------	-----------------	---------------------------------------	---------------	--



DEPARTURE: ASISO ONE

CAUTION: PARALLEL RUNWAY OPERATIONS - DO NOT TURN LEFT

RWY 01R GRAD 3.3% (4.1% TO 4000FT)

- Track 016°
- At 600FT turn RIGHT, track DCT to ASISO

TRANSITIONS:

BIXAD

- MAX IAS 250KT until ENDAB
- From ASISO, track DCT to ENDAB
- Turn LEFT, track 339° to DOXET
Cross DOXET AT or ABV 8000FT (RQ GRAD TO DOXET: 5.9%)
- Turn LEFT, track 318° to BUKBU
- Turn RIGHT, track 350° to BIXAD, thence as cleared

GUMKI

- MAX IAS 250KT until ASISO
- From ASISO, track DCT to IDKOS
Cross IDKOS AT or BLW 8000FT
- Track 060° to GUMKI, thence as cleared

SCOTT

- MAX IAS 250KT until ASISO
- From ASISO, track DCT to BEMAN
Cross BEMAN AT or BLW 8000FT
- Turn RIGHT, track 152° to NOPAS
- Turn LEFT, track 122° to SCOTT, thence as cleared

SANEG

- MAX IAS 250KT until SUGUR
- From ASISO, track DCT to POTOV
Cross POTOV AT or ABV 5000FT (RQ GRAD TO POTOV: 5.6%)
- Turn RIGHT, track 189° to SUGUR
- Turn RIGHT, track 207° to SANEG, thence as cleared

WACKO

- MAX IAS 250KT until MANLI
- From ASISO, track DCT to POTOV
Cross POTOV AT or ABV 5000FT (RQ GRAD TO POTOV: 5.6%)
- Turn RIGHT, track 189° to SUGUR
- Turn RIGHT, track 284° to MANLI
- Turn RIGHT, track 299° to CARSL
Cross CARSL AT or ABV 10,000FT (RQ GRAD TO CARSL: 3.6% FM POTOV)
- Turn RIGHT, track 300° to LAWNN
- Turn LEFT, track 287° to WACKO, thence as cleared

Changes: Editorial.

BBNDP22-168