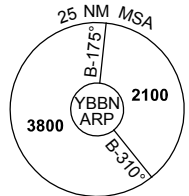
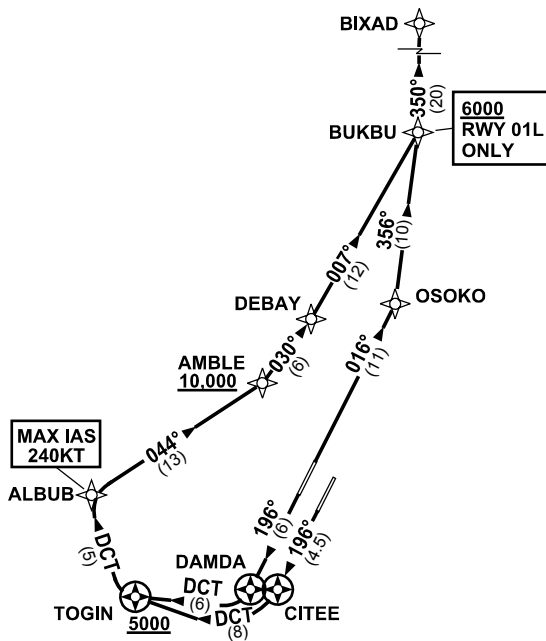


**STANDARD INSTRUMENT DEPARTURES (SID)
BIXAD TWO DEPARTURE (RNAV) RWY 01L, 19L, 19R
BRISBANE, QLD (YBBN)**

20 MAR 2025

ATIS 113.2 125.5	ACD 118.85	NORTH 124.05	SMC DOM 121.7	SOUTH 122.25	TWR 01R/19L 120.5 01L/19R 118.0	DEP 118.45 133.45	Bearings are Magnetic Elevations in FEET AMSL
---------------------	---------------	-----------------	---------------------	-----------------	---------------------------------------	----------------------	--

NOT TO SCALE



10 NM MSA 2600

DEPARTURE: BIXAD TWO

RWY 01L

GRAD 3.3% (5.3% TO 3000ft)

- Track 016° to OSOKO
- Turn LEFT, track 356° to BUKBU
Cross BUKBU AT or ABV 6000ft
(RQ GRAD TO BUKBU: 4.7%)
- Turn LEFT, track 350° to BIXAD

RWY 19R

GRAD 3.3%

MAX IAS 240KT until ALBUB

- Track 196° to DAMDA
- Turn RIGHT, track DCT to TOGIN
Cross TOGIN AT or ABV 5000ft
(RQ GRAD TO TOGIN: 6.9%)
- Turn RIGHT, track DCT° to ALBUB
- Turn RIGHT, track 044° to AMBLE
Cross AMBLE AT or ABV 10,000ft
(RQ GRAD TO AMBLE: 4.8% FM TOGIN)
- Turn LEFT, track 030° to DEBAY
- Turn LEFT, track 007° to BUKBU
- Turn LEFT, track 350° to BIXAD

RWY 19L

GRAD 3.3%

MAX IAS 240KT until ALBUB

- Track 196° to CITEE
- Turn RIGHT, track DCT to TOGIN
Cross TOGIN AT or ABV 5000ft
(RQ GRAD TO TOGIN: 7%)
- Turn RIGHT, track DCT° to ALBUB
- Turn RIGHT, track 044° to AMBLE
Cross AMBLE AT or ABV 10,000ft
(RQ GRAD TO AMBLE: 4.8% FM TOGIN)
- Turn LEFT, track 030° to DEBAY
- Turn LEFT, track 007° to BUKBU
- Turn LEFT, track 350° to BIXAD

Changes: MSA, RWY 01R PROC MOVED TO SEPARATE CHART.

BBNDP18-182