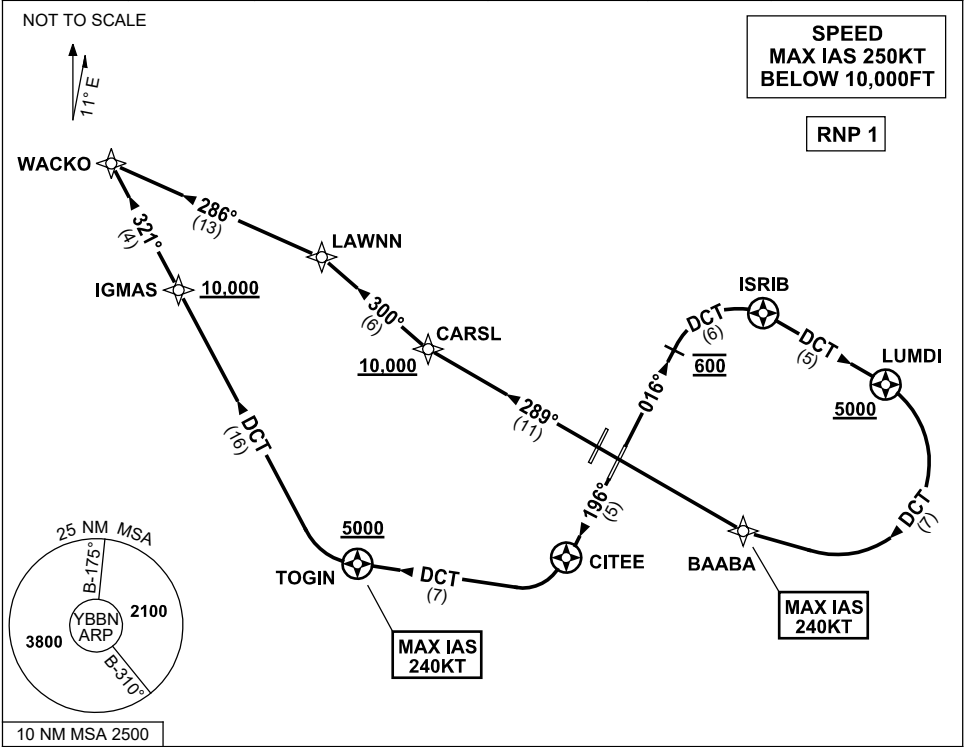


**STANDARD INSTRUMENT DEPARTURES (SID)  
WACKO THREE DEPARTURE (RNAV) RWY 01R/19L  
BRISBANE, QLD (YBBN)**

24 MAR 2022

|                     |               |                 |                     |                 |                                       |                                 |  |
|---------------------|---------------|-----------------|---------------------|-----------------|---------------------------------------|---------------------------------|--|
| ATIS<br>113.2 125.5 | ACD<br>118.85 | NORTH<br>124.05 | SMC<br>DOM<br>121.7 | SOUTH<br>122.25 | TWR<br>01R/19L 120.5<br>01L/19R 118.0 | DEP<br>01R 118.45<br>19L 133.45 | Bearings are Magnetic<br>Elevations in FEET AMSL |
|---------------------|---------------|-----------------|---------------------|-----------------|---------------------------------------|---------------------------------|--|



**DEPARTURE: WACKO THREE**

**RWY 01R**

- GRAD 3.3% ( 3.8% TO 2000FT )  
MAX IAS 240KT until BAABA
- Track 016°
- At 600FT turn RIGHT, track DCT to ISRIB
- Turn RIGHT, track DCT to LUMDI  
**Cross** LUMDI AT or ABV 5000FT  
(RQ GRAD TO LUMDI: 7.3%)
- Turn RIGHT, track DCT to BAABA
- Track 289° to CARSL  
**Cross** CARSL AT or ABV 10,000FT  
(RQ GRAD TO CARSL: 4.8% FM LUMDI)
- Turn RIGHT, track 300° to LAWNN
- Turn LEFT, track 286° to WACKO

**RWY 19L**

- GRAD 3.3% ( 4.5% TO 3000FT )  
MAX IAS 240KT until TOGIN
- Track 196° to CITEE
- Turn RIGHT, track DCT to TOGIN  
**Cross** TOGIN AT or ABV 5000FT  
(RQ GRAD TO TOGIN: 7.0%)
- Turn RIGHT, track DCT to IGMAS  
**Cross** IGMAS AT or ABV 10,000FT  
(RQ GRAD TO IGMAS: 5.0% FM TOGIN)
- Track 321° to WACKO