

**STANDARD INSTRUMENT DEPARTURES (SID)
WACKO THREE DEPARTURE (RNAV) RWY 01L/19R
BRISBANE, QLD (YBBN)**

9 SEP 2021

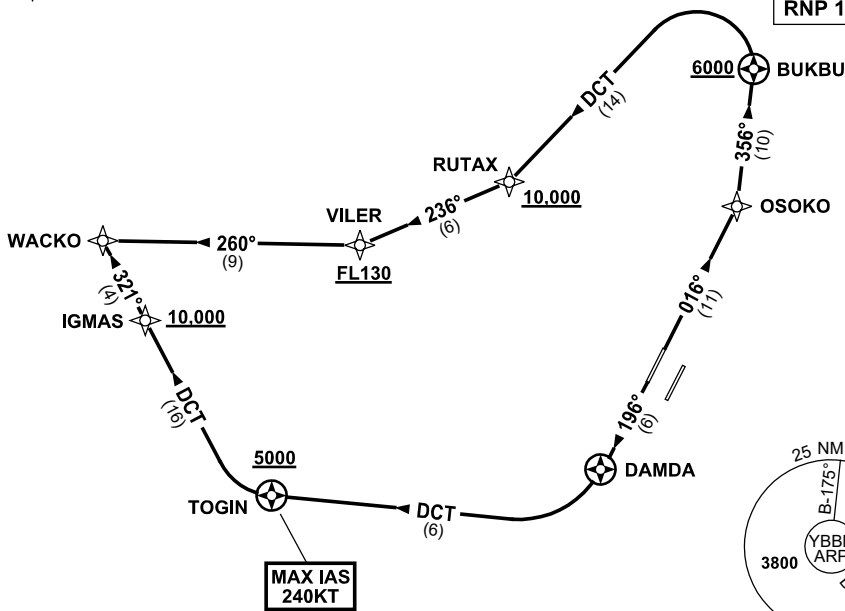
ATIS 113.2 125.5	ACD 118.85	NORTH 124.05	SMC DOM 121.7	SOUTH 122.25	TWR 01L/19R 118.0 01R/19L 120.5	DEP 133.45	Bearings are Magnetic Elevations in FEET AMSL
---------------------	---------------	-----------------	---------------------	-----------------	---------------------------------------	---------------	--

NOT TO SCALE



**SPEED
MAX IAS 250KT
BELOW 10,000FT**

RNP 1



10 NM MSA 2500

DEPARTURE: WACKO THREE

RWY 01L

GRAD 3.3% (5.3% TO 3000FT)

- Track 016° to OSOKO
- Turn LEFT, track 356° to BUKBU
Cross BUKBU AT or ABV 6000FT
- Turn LEFT, track DCT to RUTAX
Cross RUTAX AT or ABV 10,000FT
- Turn RIGHT, track 236° to VILER
Cross VILER AT or ABV FL130
(RQ GRAD TO VILER: 5.3%)
- Turn RIGHT, track 260° to WACKO

RWY 19R

GRAD 3.3% (4.4% TO 3000FT)

MAX IAS 240KT UNTIL PASSING TOGIN

- Track 196° to DAMDA
- Turn RIGHT, track DCT to TOGIN
Cross TOGIN AT or ABV 5000FT
(RQ GRAD TO TOGIN: 6.9%)
- Turn RIGHT, track DCT to IGMAS
Cross IGMAS AT or ABV 10,000FT
(RQ GRAD TO IGMAS: 5.0% FM TOGIN)
- Track 321° to WACKO