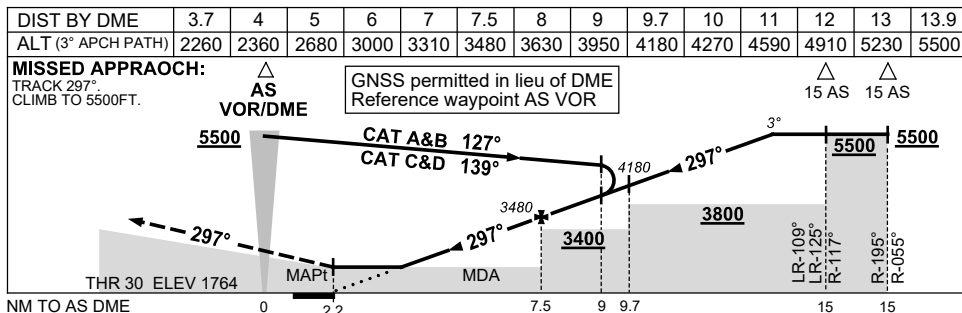
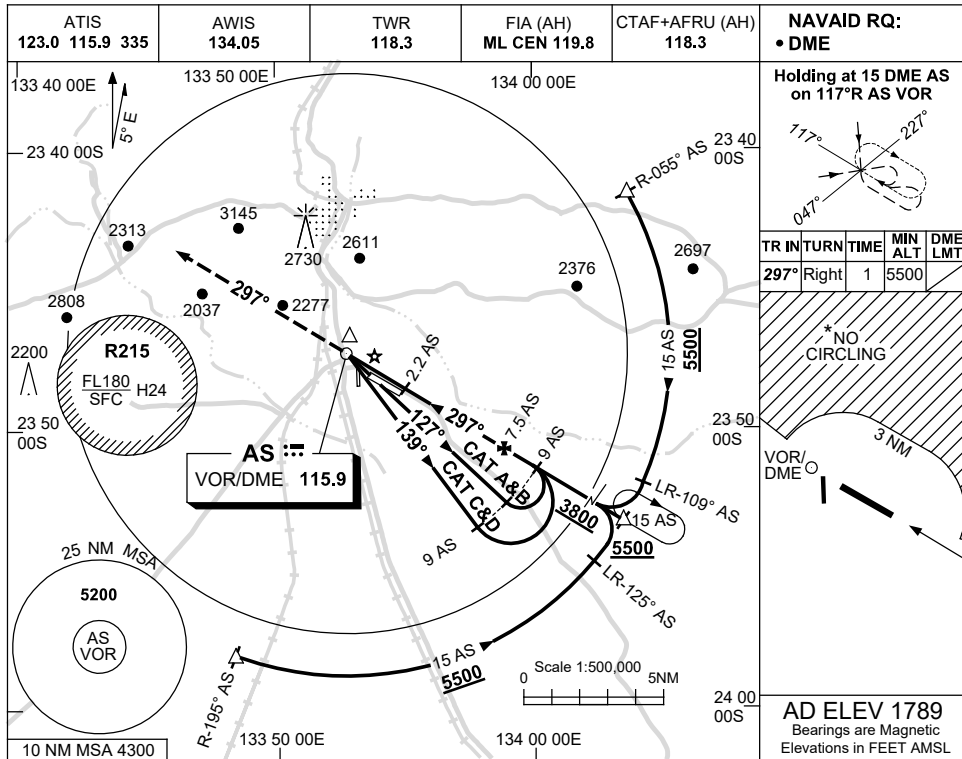


USE QNH

VOR RWY 30

ALICE SPRINGS, NT (YBAS)

17 JUN 2021



NOTES

CATEGORY	A	B	C	D
S-I VOR/DME	2260 (496-2.8)			
CIRCLING*	2570 (781-2.4)	2990 (1201-4.0)	2990 (1201-5.0)	
ALTERNATE*	(1281-4.4)	(1701-6.0)	(1701-7.0)	

- 1. MAX IAS: INITIAL : 210KT.
- \*2. SPECIAL ALTN MNM 800/4.0KM.
- \*3. NO CIRCLING N OF RWY 12/30 BEYOND 3NM.

Changes: COORD FMT.

BASV002-167