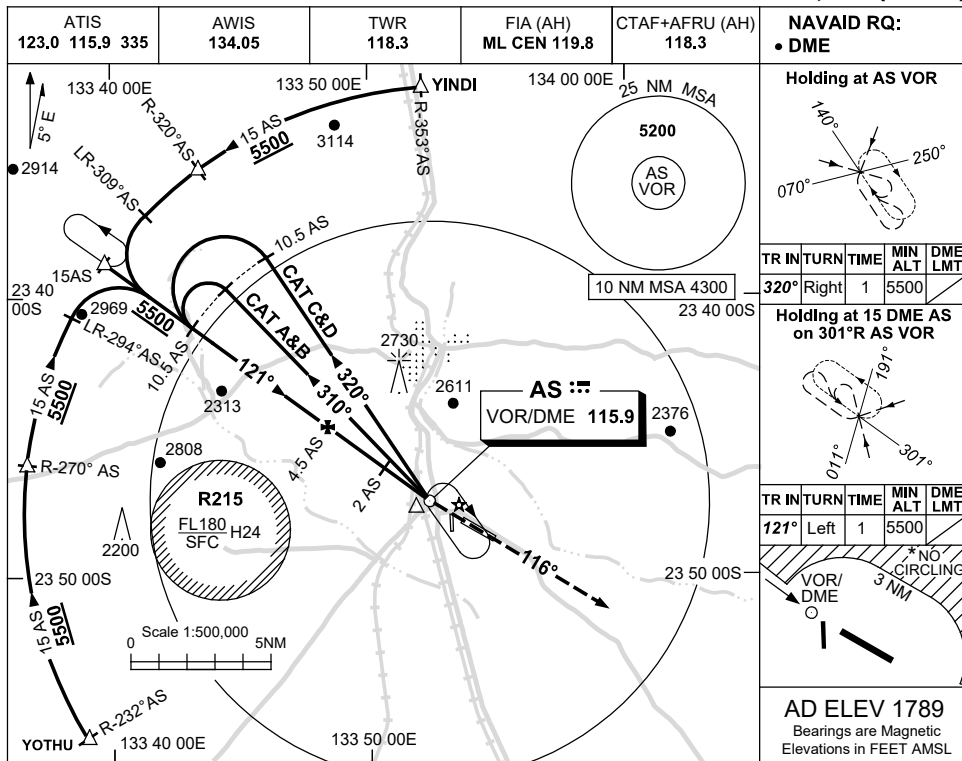


USE QNH

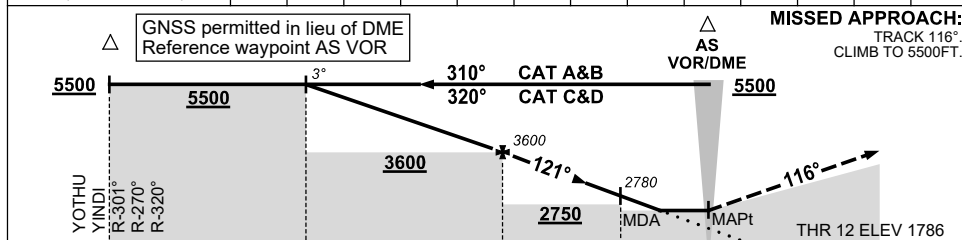
VOR RWY 12

ALICE SPRINGS, NT (YBAS)

2 DEC 2021



DIST BY DME	10.5	10	9	8	7	6	5	4.5	4	3	2	1	
ALT (3° APCH PATH)	5500	5330	5010	4690	4370	4050	3740	3600	3420	3100	2780	2450	



MISSED APPROACH:
TRACK 116°
CLIMB TO 5500FT.

NM TO AS DME	15	10.5	4.5	2	0
--------------	----	------	-----	---	---

NOTES

1. MAX IAS:
INITIAL : 210KT.
HOLDING: 185KT.
HLDG NOT ABOVE FL120.
- * 2. SPECIAL ALTN MNM 800/4.0KM.
- * 3. NO CIRCLING N OF RWY 12/30 BEYOND 3NM.

CATEGORY	A	B	C	D
S-I VOR/DME	2450 (661-2.9)			
CIRCLING *	2570 (781-2.4)	2990 (1201-4.0)	2990 (1201-5.0)	
ALTERNATE ‡	(1281-4.4)	(1701-6.0)	(1701-7.0)	

Changes: VIS.

BASV001-169