

USE QNH

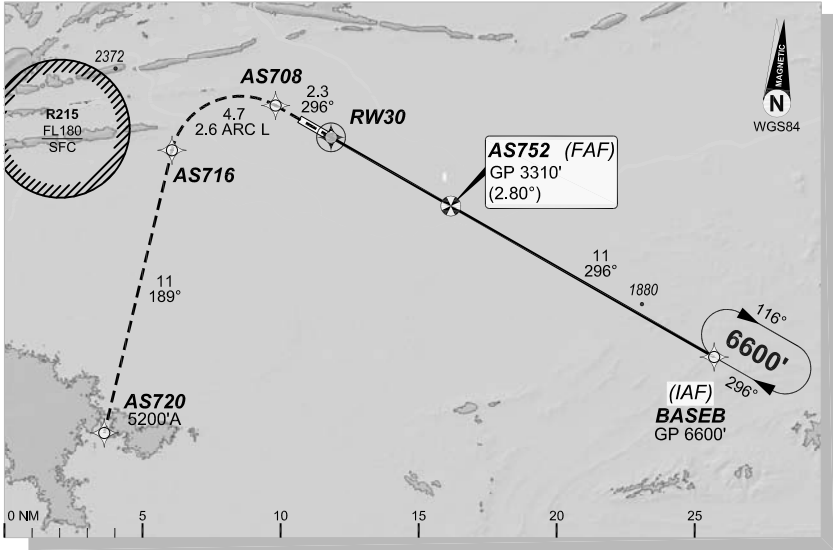
RNP U RWY 30 (AR)

1 DEC 2022

ALICE SPRINGS, NT (YBAS)

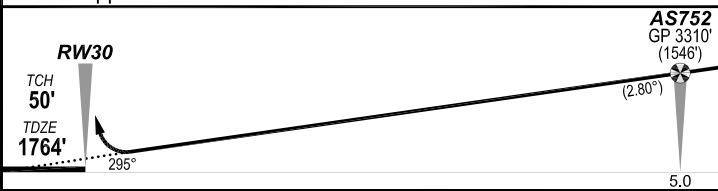
GE PROPRIETARY INFORMATION

ATIS <b>123.0 115.9 335</b>			AWIS <b>134.05</b>		TWR <b>118.3</b>	FIA (AH) <b>ML CEN 119.8</b>	CTAF + AFRU (AH) <b>118.3</b>
RNP AR <b>RNV U 30</b>	Apt Elev. <b>1789'</b> TDZE <b>1764'</b>	AS752 (FAF) <b>GP 3310' (2.80°)</b>		Trans Level <b>FL110</b>			



**MISSED APPROACH:**

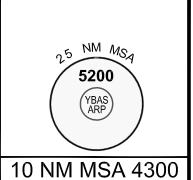
Climb to **5200'** via the RNP AR  
Missed Approach track to **AS720**.



**NOTES:**

- YBAS ACT QNH RQ.
- Minimum MAP gradient (All Engines) 3.0% to 5200FT.
- APCH Path does not coincide with PAPI glide path 3°.

				RNP <b>0.30</b>
				DA(H) <b>2067' (303')</b>
C	C	C	C	<b>1600 m</b>



202208021126COPYRIGHT. 2022 NAVERUS, INC. USA

**FOR CASA APPROVED OPERATORS ONLY**

Changes: PROC NAME, RNAV (RNP) TO RNP AR.

**DO NOT USE FOR NAVIGATION**

Prepared by GE Aviation

BASGN08-173

