

USE QNH

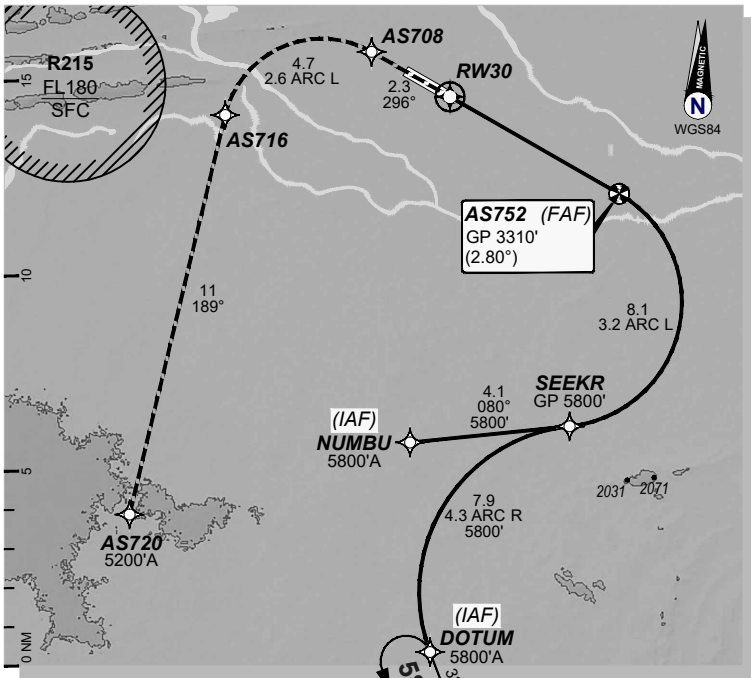
RNP P RWY 30 (AR)

21 MAR 2024

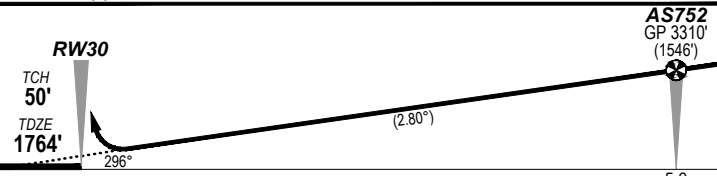
ALICE SPRINGS, NT (YBAS)

ATIS	AWIS	TWR	FIA (AH)	CTAF + AFRU (AH)
123.0 115.9 335	134.05	118.3	ML CEN 119.8	118.3

RNP AR RNP P 30	Apt Elev. 1789' TDZE 1764'	AS752 (FAF) GP 3310' (2.80°)	Trans Level FL110
--------------------	-------------------------------	---------------------------------	----------------------



MISSED APPROACH:
Climb to **5200'** via the RNP AR
Missed Approach track to **AS720**.



NOTES:
- YBAS ACT QNH RQ.
- Minimum MAP gradient (All Engines) 3.0% to 5200FT.
-APCH Path does not coincide with PAPI glide path 3°.

			RNP 0.30
			DA(H) 2067' (303')
C	C	C	1600 m



FOR CASA APPROVED OPERATORS ONLY

202310241959COPYRIGHT 2023 GE Digital USA, GE PROPRIETARY INFORMATION

Changes: from SUP H81/23

DO NOT USE FOR NAVIGATION

BASGN07-178

© Airservices Australia 2024

Prepared by GE Aviation

