

**USE QNH**

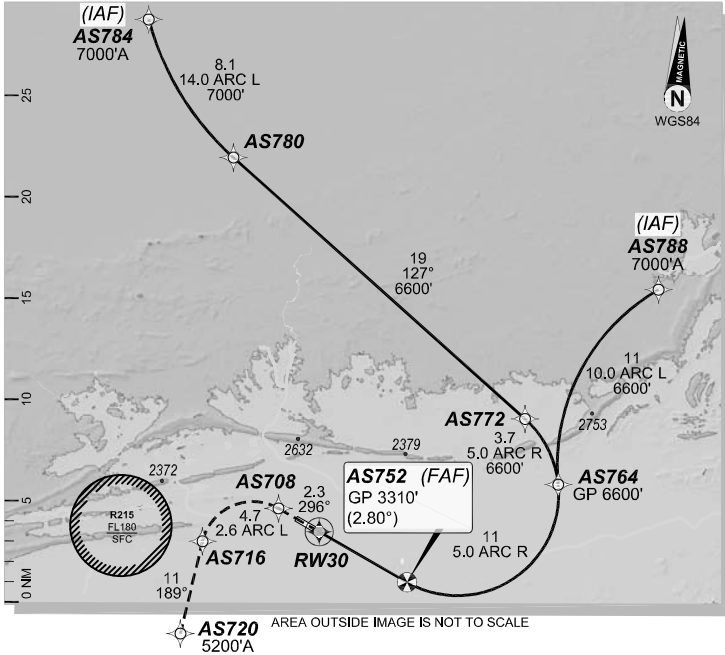
RNP M RWY 30 (AR)

**1 DEC 2022**

**ALICE SPRINGS, NT (YBAS)**

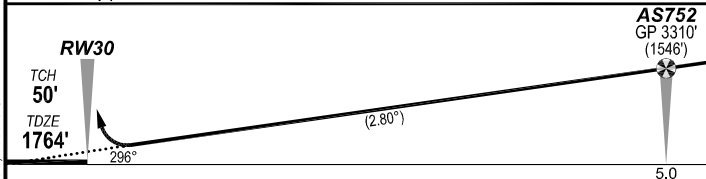
GE PROPRIETARY INFORMATION

ATIS <b>123.0 115.9 335</b>	AWIS <b>134.05</b>	TWR <b>118.3</b>	FIA (AH) <b>ML CEN 119.8</b>	CTAF + AFRU (AH) <b>118.3</b>
RNP AR <b>RNV M 30</b>	Apt Elev. <b>1789'</b> TDZE <b>1764'</b>	AS752 (FAF) <b>GP 3310' (2.80°)</b>	Trans Level <b>FL110</b>	



**MISSED APPROACH:**

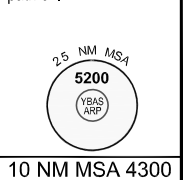
Climb to **5200'** via the RNP AR  
Missed Approach track to **AS720**.



**NOTES:**

- YBAS ACT QNH RQ.
- Minimum MAP gradient (All Engines) 3.0% to 5200FT.
- APCH Path does not coincide with PAPI glide path 3°.

				RNP <b>0.30</b>
				DA(H) <b>2067'</b> (303')
C		C		<b>1600 m</b>



202208021125COPYRIGHT 2022 NAVERUS, INC. USA

**FOR CASA APPROVED OPERATORS ONLY**

Changes: PROC NAME, RNAV (RNP) TO RNP AR.

BASGN06-173

**DO NOT USE FOR NAVIGATION**

Prepared by GE Aviation

