

**USE QNH**

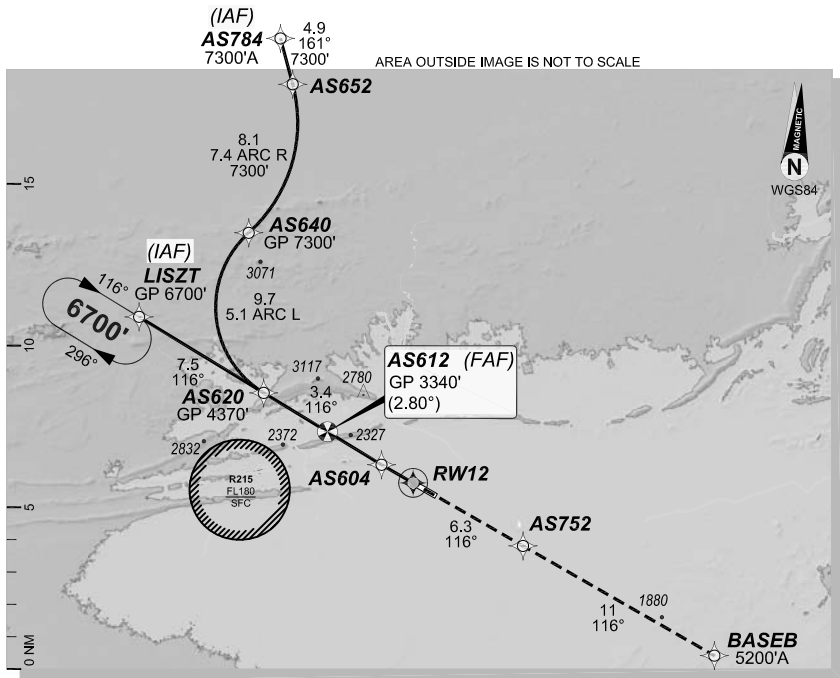
**RNP U RWY 12 (AR)**

**1 DEC 2022**

**ALICE SPRINGS, NT (YBAS)**

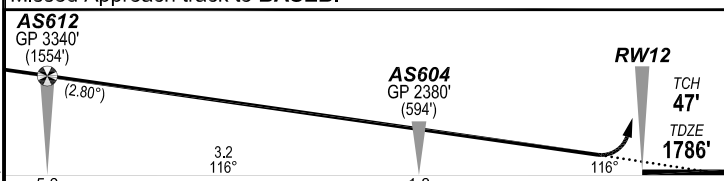
GE PROPRIETARY INFORMATION

ATIS <b>123.0 115.9 335</b>			AWIS <b>134.05</b>		TWR <b>118.3</b>	FIA (AH) <b>ML CEN 119.8</b>	CTAF + AFRU (AH) <b>118.3</b>
RNP AR <b>RNV U 12</b>		Apt Elev. <b>1789'</b> TDZE <b>1786'</b>	AS612 (FAF) <b>GP 3340'</b> (2.80°)		Trans Level <b>FL110</b>		



**MISSED APPROACH:**

Climb to **5200'** via the RNP AR  
Missed Approach track to **BASEB**.



**NOTES:**

- YBAS ACT QNH RQ.
- Minimum MAP gradient (All Engines) 3.0% to 5200FT.
- APCH Path does not coincide with PAPI glide path 3°.

AS612 GP 3340' (1554')		RW12 TCH 47' TDZE 1786'	
5.0		1.8	
3.2 116°		116°	
RNP <b>0.30</b>		RNP <b>0.30</b>	
DA(H) <b>2104'</b> (318')		DA(H) <b>2104'</b> (318')	
HIALS OUT		HIALS OUT	
C	C	C	C
800 m		1700 m	



10 NM MSA 4300

**FOR CASA APPROVED OPERATORS ONLY**

Changes: PROC NAME, RNAV (RNP) TO RNP AR.

BASGN05-173

**DO NOT USE FOR NAVIGATION**

Prepared by GE Aviation



202208021125COPYRIGHT 2022 NAVERUS, INC. USA