

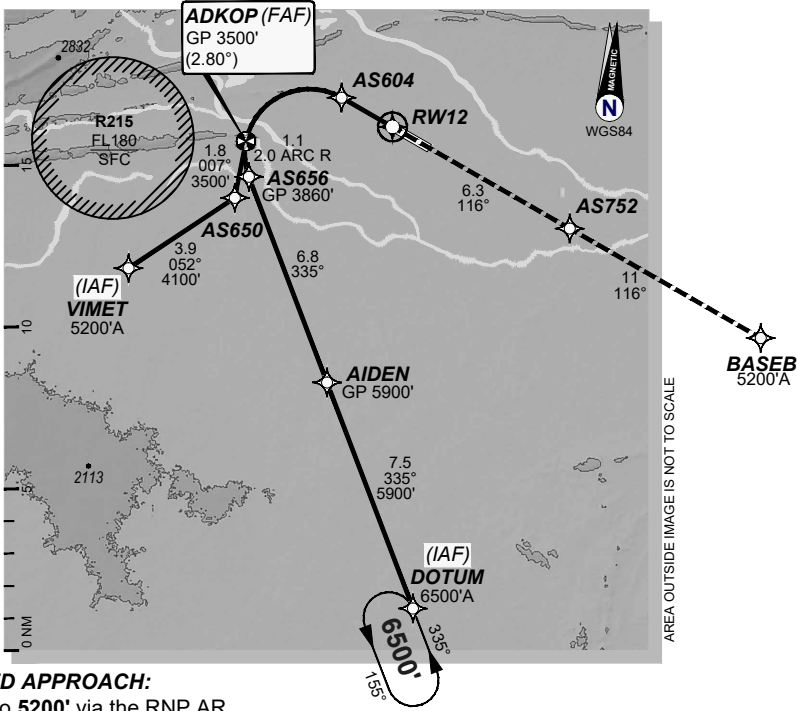
USE QNH

RNP P RWY 12 (AR)

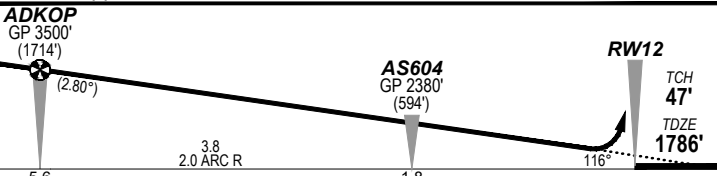
21 MAR 2024

ALICE SPRINGS, NT (YBAS)

ATIS	AWIS	TWR	FIA (AH)	CTAF + AFRR (AH)
123.0 115.9 335	134.05	118.3	ML CEN 119.8	118.3
RNP AR RNP P 12	Apt Elev. 1789' TDZE 1786'	ADKOP (FAF) GP 3500' (2.80°)	Trans Level FL110	

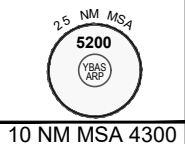


MISSED APPROACH:
Climb to 5200' via the RNP AR
Missed Approach track to **BASEB**.



NOTES:
- YBAS ACT QNH RQ.
- Minimum MAP gradient (All Engines) 3.0% to 5200FT.
- APCH Path does not coincide with PAPI glide path 3°.

ADKOP GP 3500' (1714') (2.80°)		AS604 GP 2380' (594')		RWY 12 TCH 47' TDZE 1786'	
5.6		3.8 2.0 ARC R		1.8 116°	
RNP 0.30			DA(H) 2104' (318')		
C			C		
C			C		
C			C		
800 m			1700 m		



FOR CASA APPROVED OPERATORS ONLY

202310241957COPYRIGHT 2023 GE Digital USA, GE PROPRIETARY INFORMATION

Changes: from SUP H81/23

DO NOT USE FOR NAVIGATION

BASGN04-178

© Airservices Australia 2024

Prepared by GE Aviation

