

FOR CASA APPROVED OPERATORS ONLY

USE QNH

MUDMO ONE DEPARTURE

ALICE SPRINGS, NT (YBAS)

21 MAR 2024

| Apt Elev | Trans ALT | ATIS | AWIS | TWR | FIA (AH) | CTAF + AFRU (AH) |
|----------|-----------|-----------------|--------|-------|--------------|------------------|
| 1789' | 10000' | 123.0 115.9 335 | 134.05 | 118.3 | ML CEN 119.8 | 118.3 |

MUDMO ONE
RNAV (RNP) DEPARTURE
RNP 0.30
(MUDMO1.MUDMO)
RWY 12

Minimum climb gradient (All Engines) 5.4% to 2800FT.

TAKE-OFF:

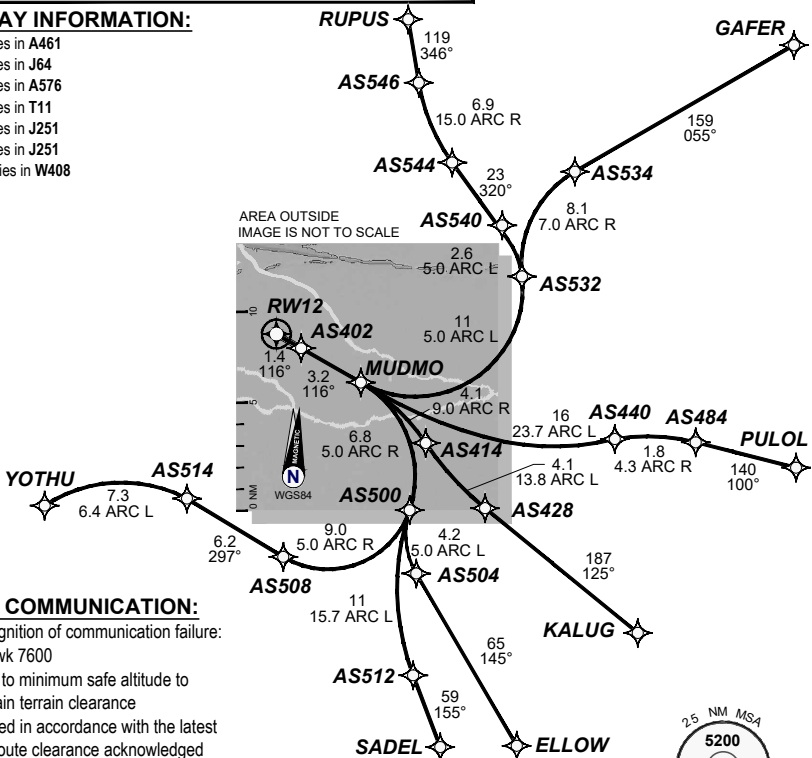
RWY 12: Fly the RNAV (RNP) track to **MUDMO**. Thence:

TRANSITIONS:

- (MUDMO1.ELLOW):** Fly the RNAV (RNP) track to **ELLOW**.
- (MUDMO1.GAFER):** Fly the RNAV (RNP) track to **GAFER**.
- (MUDMO1.KALUG):** Fly the RNAV (RNP) track to **KALUG**.
- (MUDMO1.PULOL):** Fly the RNAV (RNP) track to **PULOL**.
- (MUDMO1.SADEL):** Fly the RNAV (RNP) track to **SADEL**.
- (MUDMO1.RUPUS):** Fly the RNAV (RNP) track to **RUPUS**.
- (MUDMO1.YOTHU):** Fly the RNAV (RNP) track to **YOTHU**.

AIRWAY INFORMATION:

- AS504 lies in A461
- AS534 lies in J64
- AS428 lies in A576
- AS484 lies in T11
- AS512 lies in J251
- AS546 lies in J251
- YOTHU lies in W408



LOST COMMUNICATION:

- On recognition of communication failure:
- Squawk 7600
 - Climb to minimum safe altitude to maintain terrain clearance
 - Proceed in accordance with the latest ATC route clearance acknowledged

202310241855COPYRIGHT 2023 GE, USA, GE PROPRIETARY INFORMATION

10 NM MSA 4300

Changes: from SUP H81/23

BASDP04-178

DO NOT USE FOR NAVIGATION

Prepared by GE Aviation

