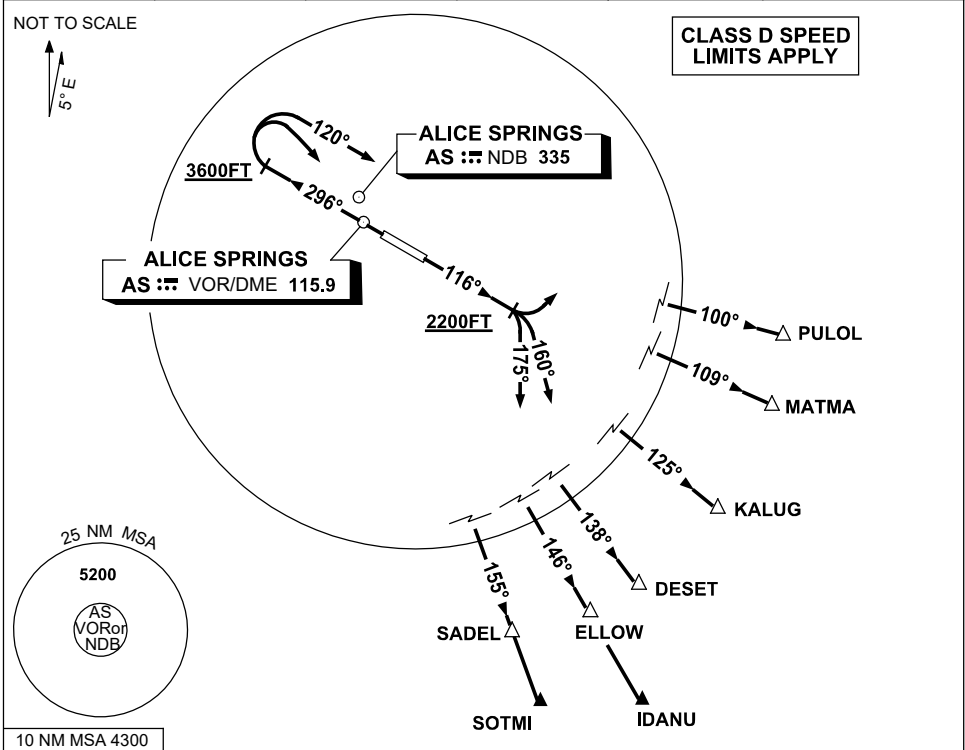


**STANDARD INSTRUMENT DEPARTURES (SID)  
RWY 12/30 SOUTH EAST  
ALICE SPRINGS, NT (YBAS)**

**30 NOV 2023**

ATIS 123.0 115.9 335	AWIS 134.05	TWR 118.3	FIA (AH) ML CEN 119.8	CTAF+AFRU (AH) 118.3	Bearings are Magnetic Elevations in FEET AMSL
-------------------------	----------------	--------------	--------------------------	-------------------------	--



<p><b>PULOL THREE DEPARTURE</b> <b>MATMA ONE DEPARTURE</b> <b>KALUG THREE DEPARTURE</b> <b>SADEL FOUR DEPARTURE</b></p> <p><b>RWY 30</b> GRAD 3.8% TO 3600ft THENCE 3.3%</p> <ul style="list-style-type: none"> <li>Track 296°</li> <li>At or ABV 3600ft but not before abeam AS VOR or NDB turn RIGHT</li> </ul> <p>For PULOL and MATMA</p> <ul style="list-style-type: none"> <li>Track 120°</li> <li>Intercept cleared route</li> </ul> <p>For KALUG, DESET, IDANU, ELLOW, SADEL and SOTMI</p> <ul style="list-style-type: none"> <li>Track DCT to AS VOR or AS NDB</li> <li>Overhead AS VOR or AS NDB</li> <li>Intercept cleared route</li> </ul>	<p><b>IDANU THREE DEPARTURE</b> <b>DESET FOUR DEPARTURE</b> <b>ELLOW THREE DEPARTURE</b> <b>SOTMI ONE DEPARTURE</b></p> <p><b>RWY 12</b> GRAD 3.3%</p> <ul style="list-style-type: none"> <li>Track 116°</li> <li>At or ABV 2200ft</li> </ul> <p>For PULOL and MATMA</p> <ul style="list-style-type: none"> <li>Turn LEFT</li> <li>Intercept cleared route</li> </ul> <p>For KALUG, DESET and IDANU</p> <ul style="list-style-type: none"> <li>Turn RIGHT</li> <li>Track 160°</li> <li>Intercept cleared route</li> </ul> <p>For ELLOW, SADEL and SOTMI</p> <ul style="list-style-type: none"> <li>Turn RIGHT</li> <li>Track 175°</li> <li>Intercept cleared route</li> </ul>
---	---

Changes: SOTMI REPLACES SARAH, MATMA REPLACES STEEL, Editorial. BASDP02-177