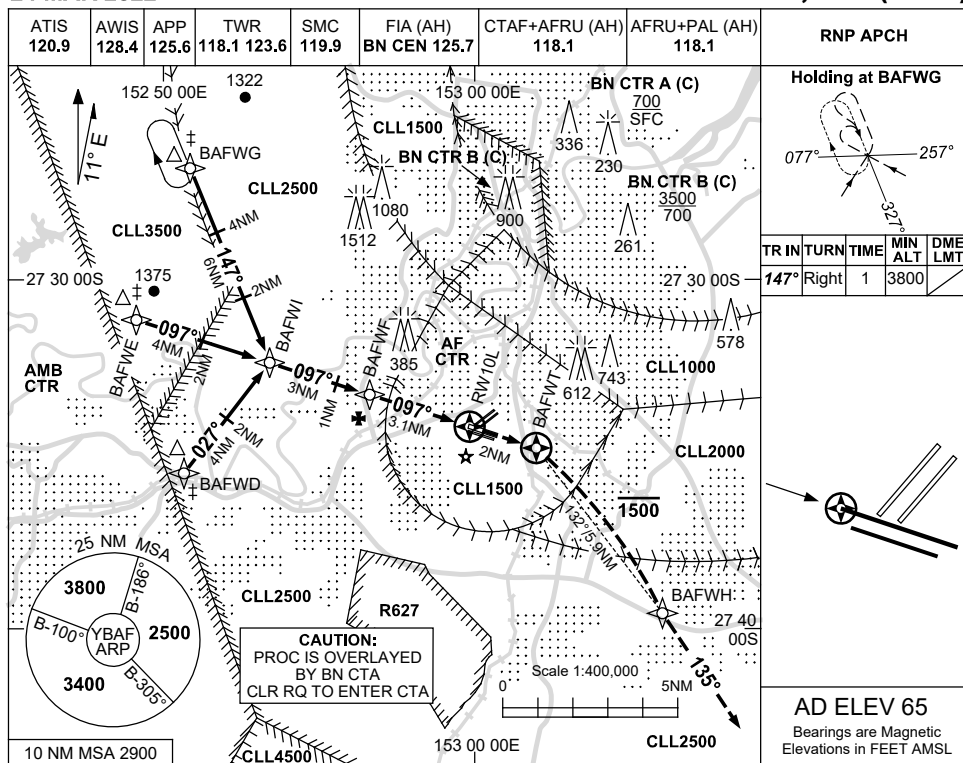


USE QNH

RNP Z RWY 10L

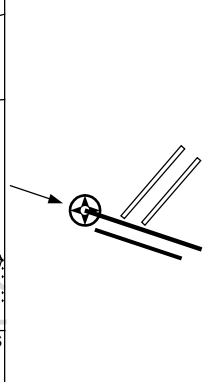
24 MAR 2022

**BRISBANE/ARCHERFIELD, QLD (YBAF)**

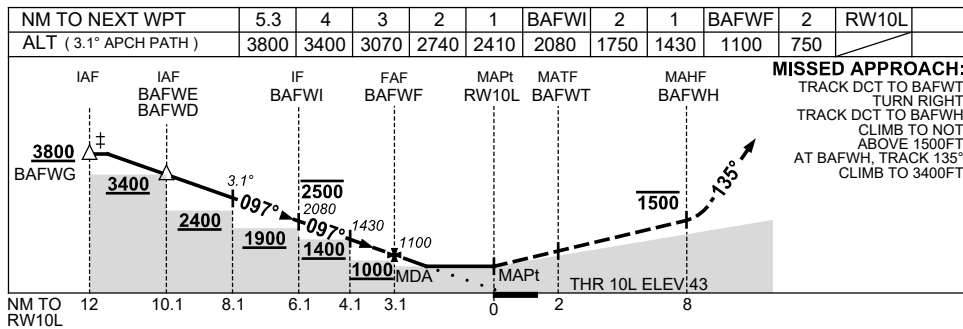


**Holding at BAFWG**

TR	IN	TURN	TIME	MIN ALT	DME LMT
147°	Right		1	3800	



**AD ELEV 65**  
Bearings are Magnetic  
Elevations in FEET AMSL



- NOTES**
- ‡ 1. ATC CLR RQ FOR PROC.
  - 2. PROC NOT FULLY CONTAINED IN CONTROLLED AIRSPACE.
  - 3. MAX IAS: INITIAL 160KTS, MAP TURN 160KTS

CATEGORY	A	B	C	D
LNAV	750 (707-4.0)		NOT APPLICABLE	
CIRCLING	1010 (945-2.4)			
ALTERNATE	(1445-4.4)			

Changes: PROC ALTITUDES

BAFGN02-170