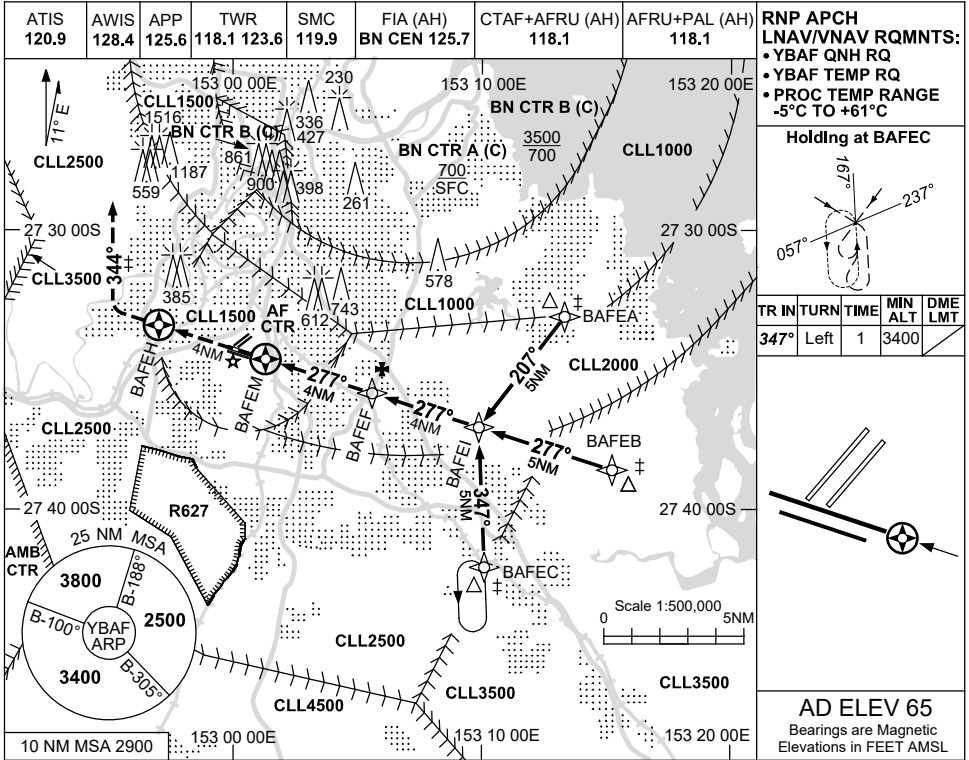


USE QNH
BRISBANE/ARCHERFIELD, QLD (YBAF)

RNP RWY 28R

20 MAR 2025



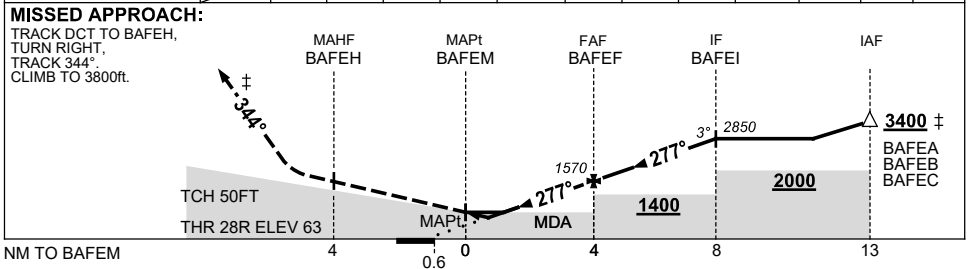
RNP APCH
LNAV/VNAV RQMTS:
• YBAF QNH RQ
• YBAF TEMP RQ
• PROC TEMP RANGE
-5°C TO +61°C

Holding at BAFEC

TR	IN	TURN	TIME	MIN ALT	DME LMT
347°	Left	1	3400		

AD ELEV 65
Bearings are Magnetic
Elevations in FEET AMSL

NM TO NEXT WPT	BAFEM	1.2	1.6	2	3	BAFEB	1	2	3	BAFEI		
ALT (3° APCH PATH)		680	810	940	1260	1570	1890	2210	2530	2850		



CATEGORY	A		B		C		D	
	Alt	Speed	Alt	Speed	Alt	Speed	Alt	Speed
LNAV/VNAV	680	(617-3.5)			NOT APPLICABLE			
LNAV	820	(755-4.3)						
CIRCLING	1010	(945-2.4)						
ALTERNATE		(1445-4.4)						

- NOTES**
- MAX IAS : HOLDING : 150KT.
 - ‡ ATC CLR RQ FOR PROC.
 - PROC PARTIALLY OUTSIDE CONTROL AREA.

Changes: LNAV MINIMA, MSA.

BAFGN01-182