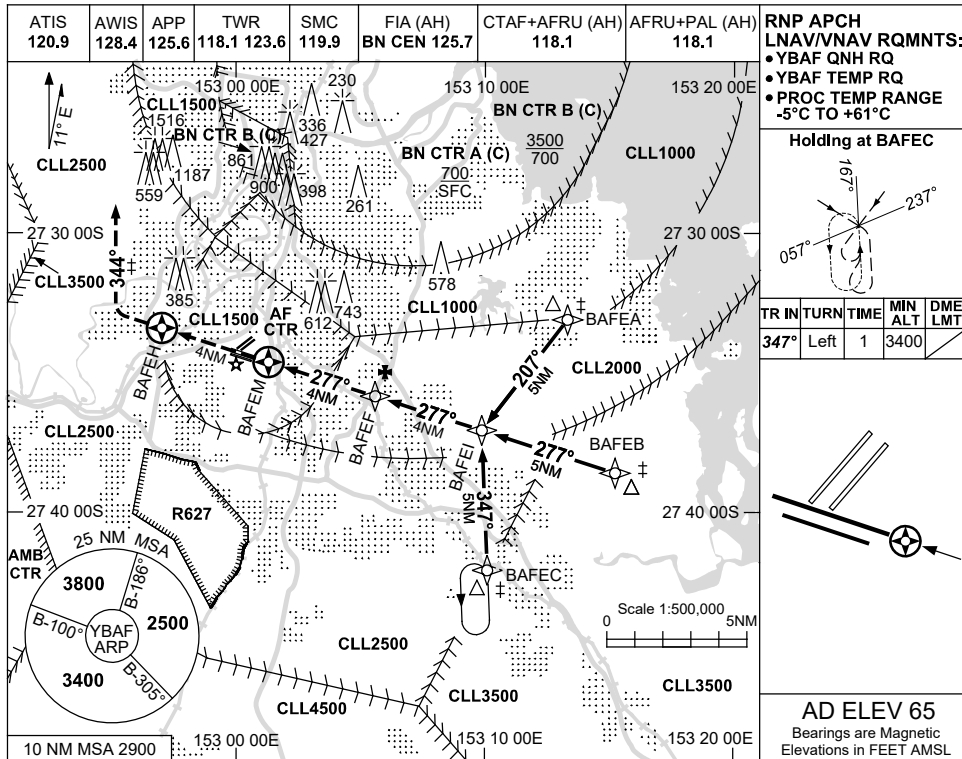


USE QNH

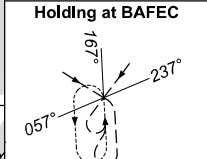
RNP RWY 28R

BRISBANE/ARCHERFIELD, QLD (YBAF)

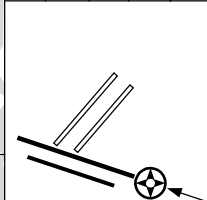
9 SEP 2021



RNP APCH
LNAV/VNAV RQMTS:
 • YBAF QNH RQ
 • YBAF TEMP RQ
 • PROC TEMP RANGE
 -5°C TO +61°C

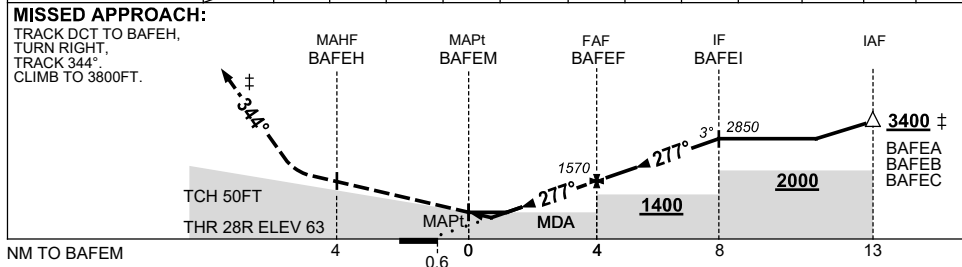


TR	IN	TURN	TIME	MIN ALT	DME LMT
347°	Left	1	3400		



AD ELEV 65
 Bearings are Magnetic
 Elevations in FEET AMSL

NM TO NEXT WPT	BAFEM	1.2	1.6	2	3	BAFEF	1	2	3	BAFEI		
ALT (3° APCH PATH)		680	810	940	1260	1570	1890	2210	2530	2850		



CATEGORY	A		B		C		D	
	680	(617-3.5)	810	(745-4.3)	NOT APPLICABLE			
LNAV/VNAV	680	(617-3.5)	810	(745-4.3)	NOT APPLICABLE			
LNAV	810	(745-4.3)	NOT APPLICABLE					
CIRCLING	1010	(945-2.4)	NOT APPLICABLE					
ALTERNATE	(1445-4.4)		NOT APPLICABLE					

- NOTES**
- MAX IAS : HOLDING: 150KT.
 - ATC CLR RQ FOR PROC.
 - PROC PARTIALLY OUTSIDE CONTROL AREA.

Changes: CHART TITLE, PBN SPECIFICATION BOX.

BAFGN01-168