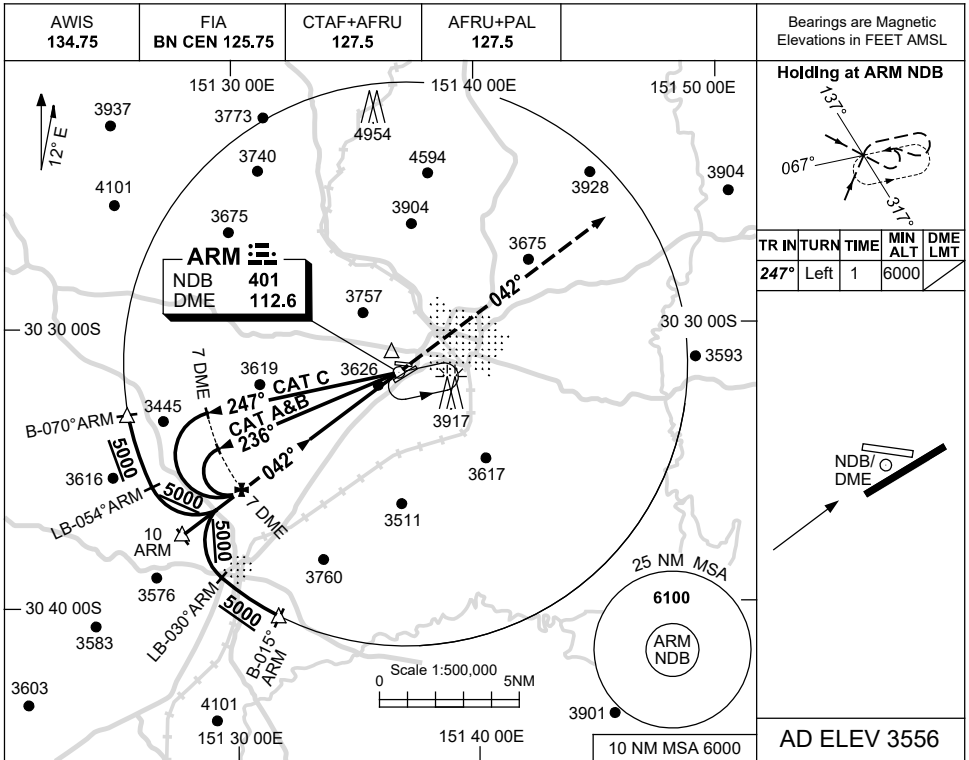


USE QNH

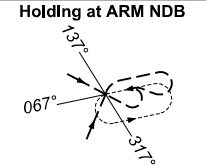
NDB RWY 05

17 JUN 2021

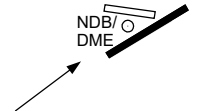
ARMIDALE, NSW (YARM)



Bearings are Magnetic
Elevations in FEET AMSL

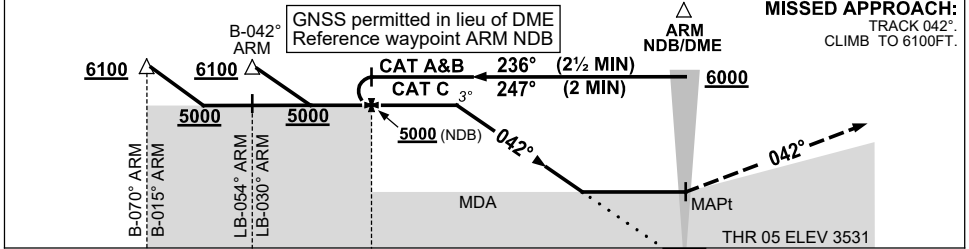


TR	IN	TURN	TIME	MIN ALT	DME LMT
247°	Left	1		6000	



AD ELEV 3556

DIST TO ARM DME	4.9	4	3	2.3									
ALT (3° APCH PATH)	5000	4710	4390	4160									



MISSED APPROACH:
TRACK 042°
CLIMB TO 6100FT.

NM TO
ARM DME

NOTES

CATEGORY	A	B	C	D
S-I NDB		4210 (679-3.9)		NOT APPLICABLE
S-I NDB/DME		4160 (629-3.6)		
CIRCLING	4340 (784-2.4)		4440 (884-4.0)	
ALTERNATE	(1284-4.4)		(1384-6.0)	

1. MAX IAS:
INITIAL : 210KLT.

Changes: COORD FMT, Editorial.

ARMNB01-167