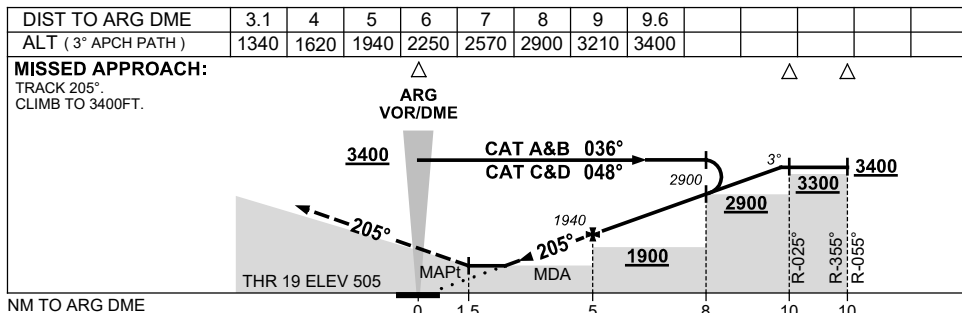
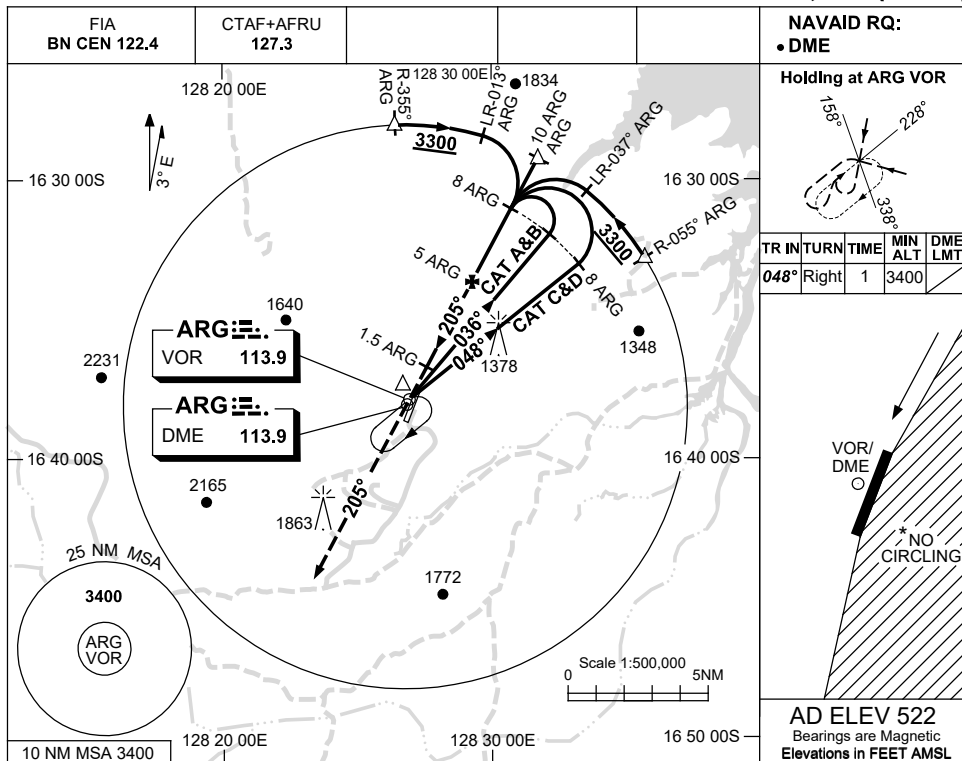


USE QNH

VOR RWY 19
ARGYLE, WA (YARG)

15 AUG 2019



NOTES

CATEGORY	A	B	C	D
S-I VOR/DME	1340 (835-4.8)			
CIRCLING*	1340 (818-2.4)		1990(1468-4.0) 2360(1838-5.0)	
ALTERNATE	(1318-4.4)		(1968-6.0) (2338-7.0)	

1. MAX IAS:
INITIAL : 210KT.
- * 2. NO CIRCLING EAST OF RWY 01/19.
3. AWIS (PHONE)
08 6216 2601

Changes: NOTE 3, COORD FORMAT, Editorial.

ARGV001-160