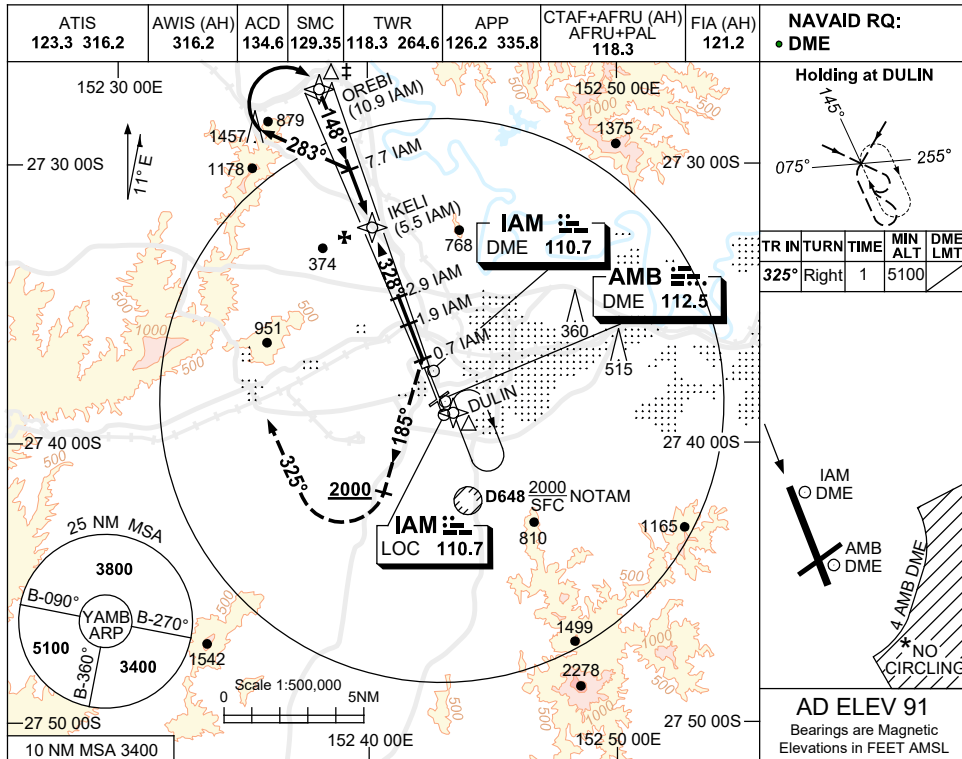


USE QNH

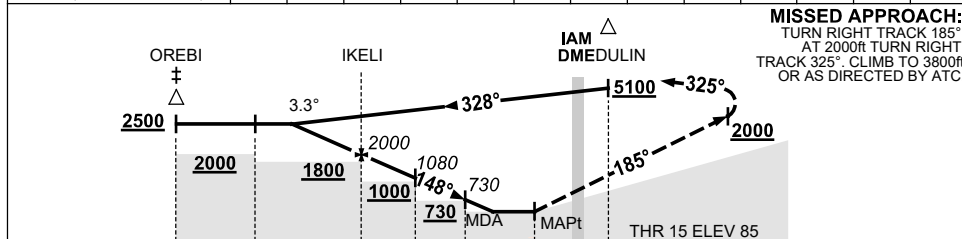
LOC-Z RWY 15

21 MAR 2024

AMBERLEY, QLD (YAMB)



NM TO IAM DME	6.9	6	5.5	5	4	2.9	1.9	1.7			
ALT (3.3° APCH PATH)	2500	2170	2000	1820	1470	1080	730	650			



CATEGORY	A	B	C	D
S-I LOC/DME	650 (559-2.0)			
CIRCLING *	860 (769-2.4)		1090 (999-4.0) 1550 (1459-5.0)	
ALTERNATE	(1269-4.4)		(1499-6.0) (1959-7.0)	

**NOTES**

1. ACFT MAY BE RADAR VECTORED TO 10.9 IAM DME IAF.
2. APCH PATH ANGLE DOES NOT COINCIDE WITH PAPI ON GLIDE SLOPE INDICATION.
3. NO CIRCLING SE OF RWY 15/33 AND RWY 04/22 BEYOND 4 AMB DME.
4. COLOUR : SEE SPEC NOTICES.

Changes: MINIMA, DME FREQ, VIS, OM/MM REMOVED, FAF WPT, DME REFERENCE, Editorial.

AMBLZ01-178