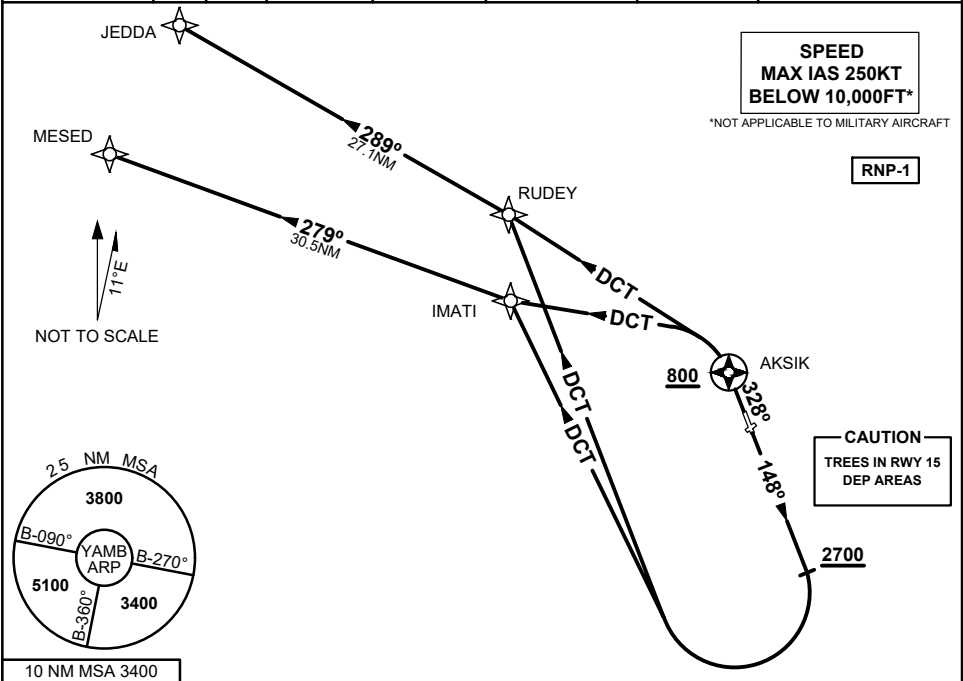


STANDARD INSTRUMENT DEPARTURES (SID)
RWY 15/33 NORTH WEST (RNAV)
AMBERLEY, QLD (YAMB)

04 SEP 2025

| ATIS / AWIS (AH) | ACD | SMC | TWR | APP | CTAF+AFRU (AH) AFRU+PAL (AH) | FIA | Bearings are Magnetic Elevations in FEET AMSL |
|------------------|-------|--------|-------------|-------------|---------------------------------|--------------|--|
| 123.3 316.2 | 134.6 | 129.35 | 118.3 264.6 | 126.2 335.8 | 118.3 | BN CEN 121.2 | |



JEDDA FIVE ALPHA DEPARTURE
MESED FIVE ALPHA DEPARTURE

RWY 15

- GRAD 4.3% to 2700FT, then 3.3%
- Track 148°
- When passing 2700FT, but not before DER

FOR JEDDA

- Turn RIGHT DCT to RUDEY
- Track 289° to JEDDA
- Thence as cleared

FOR MESED

- Turn RIGHT DCT to IMATI
- Track 279° to MESED
- Thence as cleared

RWY 33

- GRAD 3.9% to 800FT, then 3.3%
- Track 328° to AKSIK
- AT AKSIK, but not BLW 800FT

FOR JEDDA

- Turn LEFT DCT to RUDEY
- Track 289° to JEDDA
- Thence as cleared

FOR MESED

- Turn LEFT DCT to IMATI
- Track 279° to MESED
- Thence as cleared

Changes: FROM SUP H88/25

AMBDP04-184

