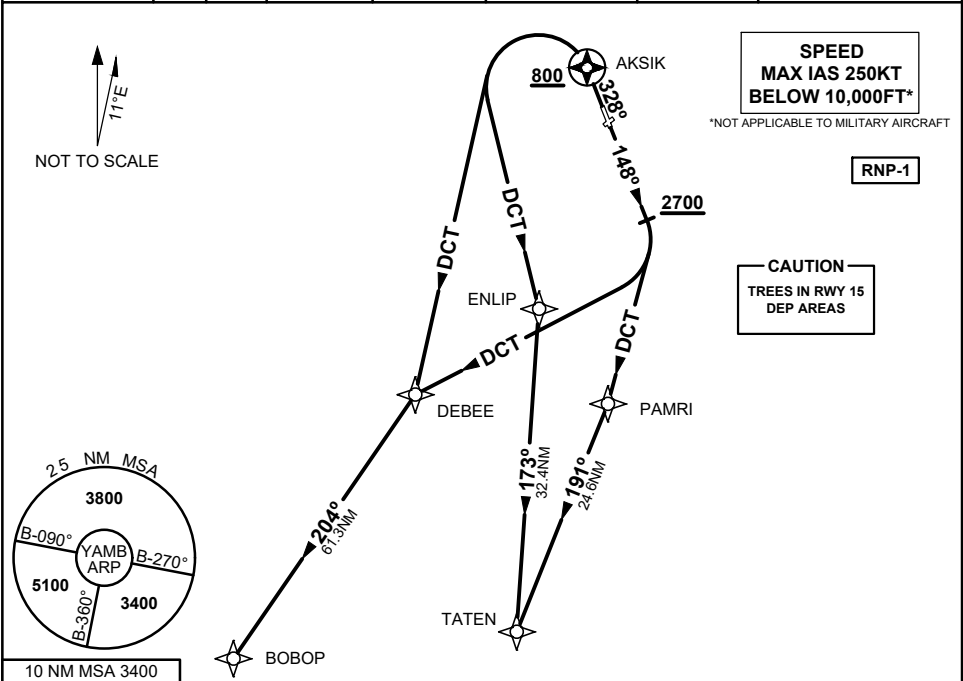


STANDARD INSTRUMENT DEPARTURES (SID)
RWY 15/33 SOUTH (RNAV)
AMBERLEY, QLD (YAMB)

04 SEP 2025

ATIS / AWIS (AH)	ACD	SMC	TWR	APP	CTAF+AFRU (AH) AFRU+PAL (AH)	FIA	Bearings are Magnetic Elevations in FEET AMSL
123.3 316.2	134.6	129.35	118.3 264.6	126.2 335.8	118.3	BN CEN 121.2	



BOBOP FIVE ALPHA DEPARTURE
TATEN TWO ALPHA DEPARTURE

RWY 15

- GRAD 4.3% to 2700FT, then 3.3%
- Track 148°
- When passing 2700FT, but not before DER

FOR BOBOP

- Turn RIGHT DCT to DEBEE
- Track 204° to BOBOP
- Thence as cleared

FOR TATEN

- Turn RIGHT DCT to PAMRI
- Track 191° to TATEN
- Thence as cleared

RWY 33

- GRAD 3.9% to 800FT, then 3.3%
- Track 328° to AKSIK
- AT AKSIK, but not BLW 800FT

FOR BOBOP

- Turn LEFT DCT to DEBEE
- Track 204° to BOBOP
- Thence as cleared

FOR TATEN

- Turn LEFT DCT to ENLIP
- Track 173° to TATEN
- Thence as cleared

