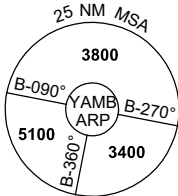
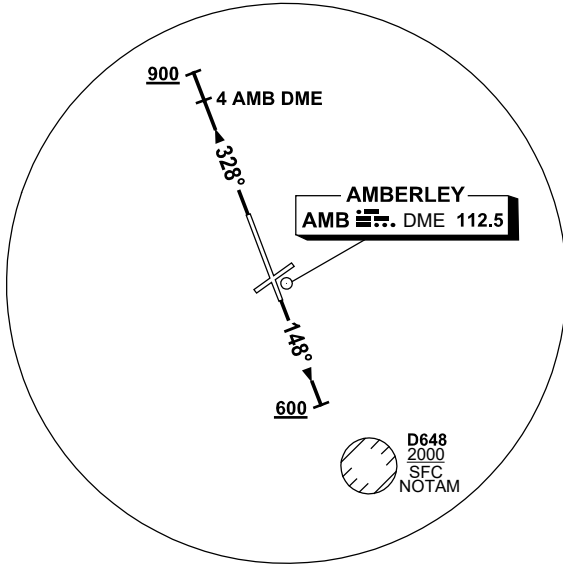


**STANDARD INSTRUMENT DEPARTURES (SID)
AMBERLEY THREE DEPARTURE (RADAR) - RWY 15 & 33
AMBERLEY, QLD (YAMB)**

21 MAR 2024

ATIS 123.3 316.2	AWIS (AH) 316.2	ACD 134.6	SMC 129.35	TWR 118.3 264.6	APP 126.2 335.8	CTAF+AFRU (AH) AFRU+PAL 118.3	FIA (AH) 121.2	Bearings are Magnetic Elevations in FEET AMSL
---------------------	--------------------	--------------	---------------	--------------------	--------------------	-------------------------------------	-------------------	--

NOT TO SCALE



D648
2000
SFC
NOTAM

10 NM MSA 3400

AMBERLEY THREE DEPARTURE

RWY 15

- GRAD 4.3% to 2700ft, then 3.3%
- Track 148°
- AT 600ft BUT NOT BEFORE DER, turn to assigned heading or track (NO LEFT TURN BLW 1600ft)

RWY 33

- GRAD 3.9% to 900ft, then 3.3%
- Track 328°
- AT or ABV 900ft BUT NOT BEFORE 4 AMB DME, turn to assigned heading or track

COMMUNICATIONS FAILURE PROCEDURE

On recognition of communication failure

- Squawk 7600
- Maintain last assigned vector for two minutes, and
- CLIMB IF NECESSARY TO MINIMUM SAFE ALTITUDE, to maintain terrain clearance, then
- proceed in accordance with the latest ATC route clearance acknowledged.

Changes: DME FREQUENCY, Editorial.

AMBDP01-178