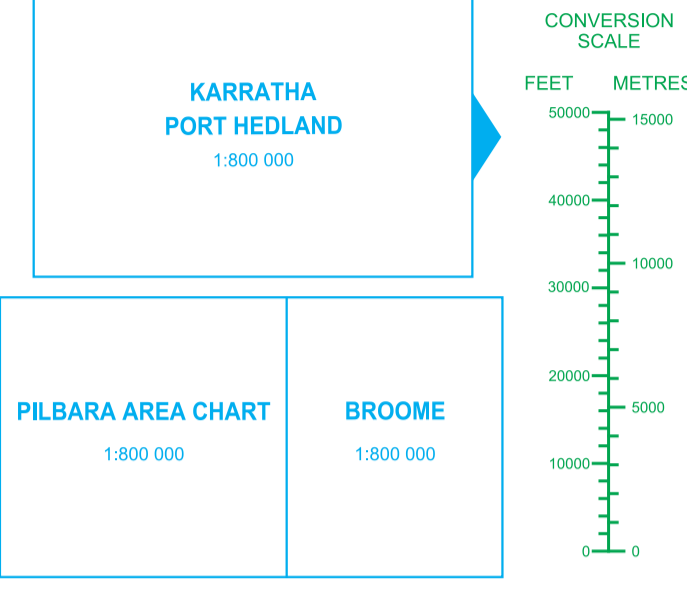


TAC-8 AUSTRALIA TAC-7
TERMINAL AREA CHARTS
 FOR USE UP TO AND INCLUDING FL600



CAUTION
 CONTINENTAL ROUTE SEGMENT LSALT PUBLISHED ON THIS CHART ARE ONLY VALID FOR RNP 2 OPERATIONS. FOR OPERATIONS OTHER THAN RNP 2 OPERATIONS, OPERATORS AND PILOTS MUST USE A PILOT CALCULATED ROUTE LSALT OR GRID LSALT.

USE IN OPERATION ONLY AFTER CHECKING
 1. CURRENCY OF CHART
 2. AIP SUPPLEMENT AND NOTAM
 3. FOR ADDITIONAL PROHIBITED, RESTRICTED AND DANGER AREAS, AND RADIO NAVIGATION INFORMATION SEE AIP/ERSA
 4. RVSM/RNP AIRSPACE REQUIREMENTS IN AIP

CLASS C CTA UPPER LIMIT FL180, EXCEPT AS SHOWN, LOWER LIMIT AS SHOWN
 CLASS A CTA UPPER LIMIT FL600, LOWER LIMIT AS SHOWN
 OCA EXISTS AS CLASS A, FL245-FL600, AS SHOWN
 RVSM EXISTS IN CLASS A AIRSPACE BETWEEN FL300 AND FL410
 RNP EXISTS IN CONTROLLED AIRSPACE

Distances are in nautical miles.
 Elevations and altitudes are shown in feet AMSL, unless otherwise specified.
 Verified Aerodrome/ALA - Aeronav has a responsible person registered for the location and associated information confirmed.
 Unverified Aerodrome/ALA - Aeronav has not been advised of a responsible person for the location. Status and serviceability are unknown.

© AIRSERVICES AUSTRALIA, 2023.
 This publication is copyright. Unless specified otherwise, you may use this publication only for information purposes. Except as permitted by the Copyright Act 1968, no part of this publication may be reproduced, stored in a retrieval system, transmitted, modified, or otherwise used in any way without the prior written permission of Airservices Australia. If you wish to use any part of this publication in any way not permitted by the notice, contact Airservices Australia about a licence.
 Copyright © Airservices Australia 2023. All rights reserved worldwide.

TAC-8 TAC-7

CHART LEGEND

AERODROME
 CIVIL (Certified) AERODROME/ALA (Verified)
 JOMI CIVIL/MILITARY AERODROME/ALA (Unverified)
 MILITARY AERODROME/ALA (Unverified)

NAVIGATION AIDS
 VOR
 TACAN
 NDB
 ILS OR LOCALIZER
 NAVIGATION BOXES

AIR TRAFFIC SERVICES
 CLASS C & D AIRSPACE (WHERE LL IS BLW FL200, Check for underlying class E)
 CLASS E AIRSPACE (WHERE LL IS BLW FL180, (Except where class C exists above))
 CLASS G AIRSPACE (Class G exists from SFC to the base of overlying Class A, C, D or E airspace)
 G Frequency Boundary
 E Frequency Boundary
 FLIGHT INFORMATION REGION BOUNDARY
 OCA A BOUNDARY
 CLASS C and D CONTROL ZONE
 MILITARY CONTROL ZONE

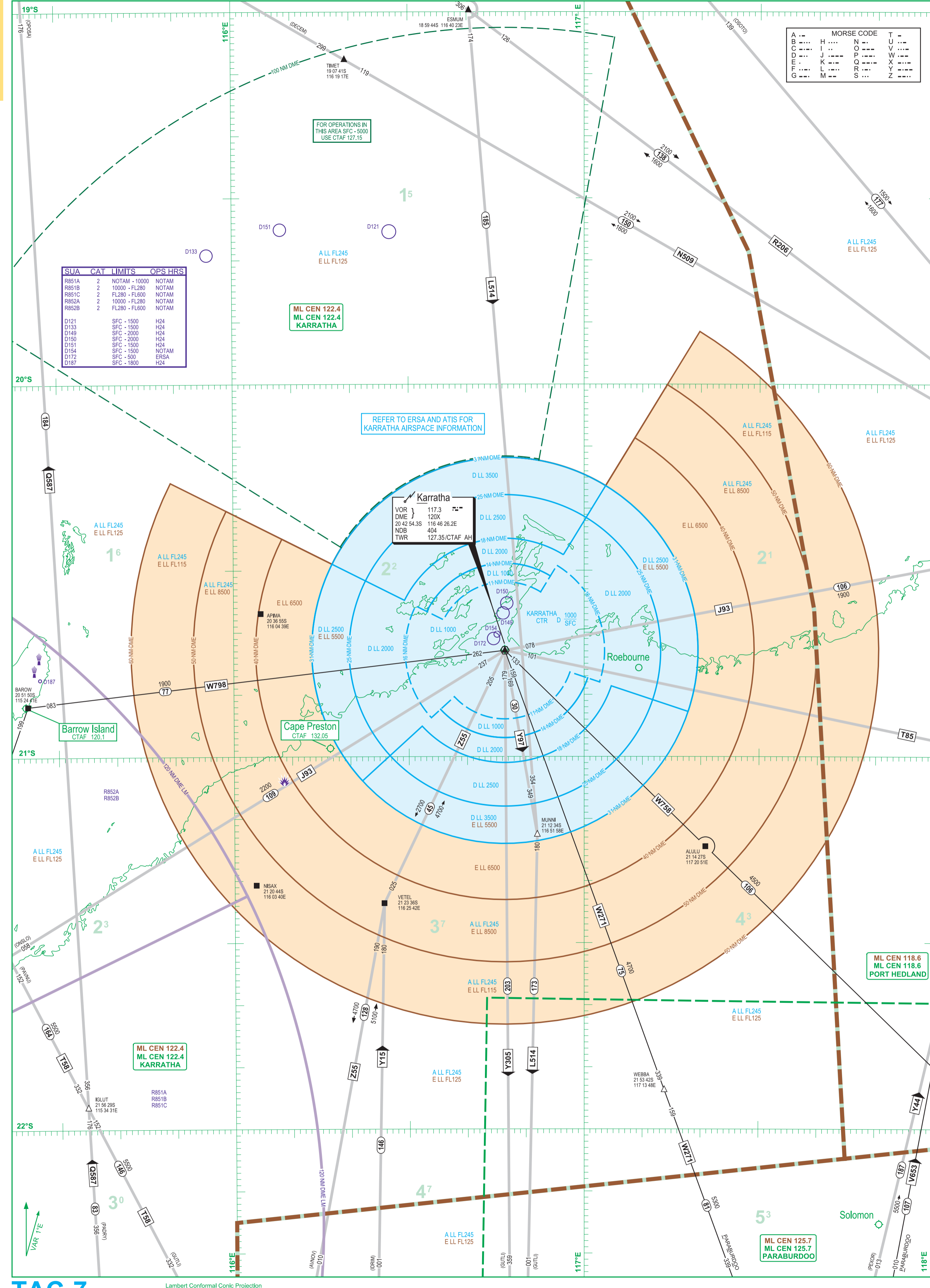
SPECIAL USE AIRSPACE
 VOLMET FREQUENCY
 WITH LOCATION
 VOR
 TACAN
 NDB
 ILS OR LOCALIZER
 NAVIGATION BOXES

AIRWAYS AND ROUTE DATA
 COMPULSORY POSITION REPORT FOR ALL AIRCRAFT
 POSITION REPORT FOR AIRCRAFT WITH TAS LESS THAN 300 KT AND FOR OTHER AIRCRAFT ON REQUEST
 IN ADDITION TO THE ABOVE, AIRSEP SECTION 3 REQUIRED FROM DESIGNATED FLIGHTS
 COMPULSORY REPORTING REQUIRED ONLY IN THE DIRECTIONS INDICATED
 WAYPOINT-NO REPORT REQUIRED
 HOLDING PATTERN
 FEATURE NOT ON ROUTE DESIGNATED ROUTE
 GRID LOWEST SAFE ALTITUDE (The Numerals centred in each 1° Grid Square Indicate Lowest Safe Altitude in Hundreds of Feet. Example shown 5700FT)

SPORT AVIATION AND MISCELLANEOUS
 ULTRALIGHT
 HANG GLIDER
 MODEL AIRCRAFT
 WINCH OR AUTO-TOW LAUNCHED SPORTS AVIATION OPERATION
 BALLOON ASCENTS MET, MANNED
 BLASTING, PLUME

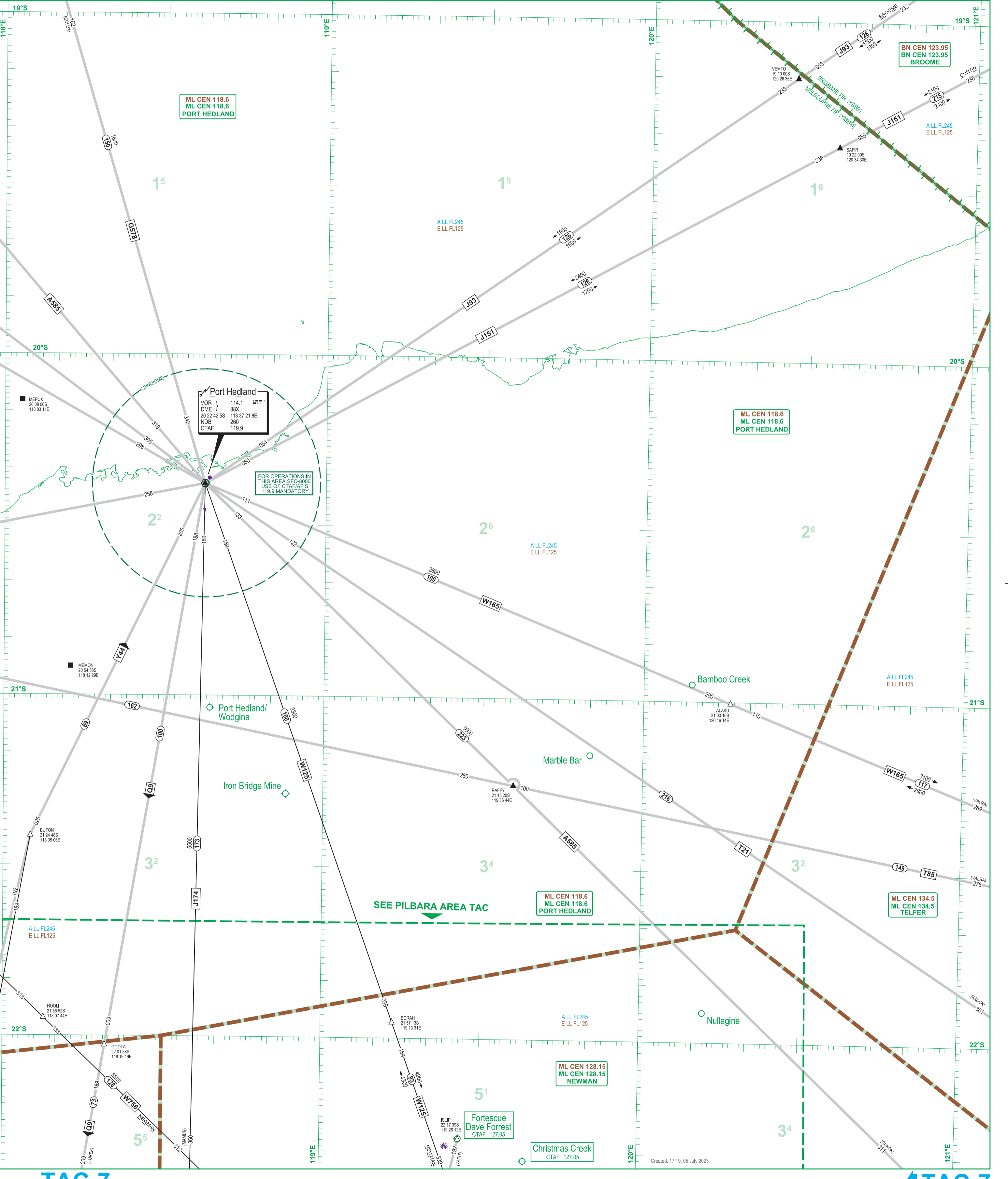
SPORT AVIATION AND MISCELLANEOUS
 PARACHUTE JUMPING (Normally up to FL150)
 GLIDER OPERATIONS (Glider's use and monitor frequencies 122.7, 122.6, 122.9)
 WINCH OR AUTO-TOW LAUNCHED SPORTS AVIATION OPERATION (Launching cables may extend to 3000FT AGL)
 MODEL AIRCRAFT
 BALLOON ASCENTS MET, MANNED
 BLASTING, PLUME

TAC-7



KARRATHA

PORT HEDLAND



TAC-7

TAC-8 TAC-7

TAC-7

TAC-7