

## ATFM Daily Plan - Friday 10 May 2024

ADP Version 1



Airport	Planned GDPs	Total Arr/Dep	Affected Flights	Total Ground Delay	Av. Ground Delay	36 Hr Synoptic Forecast
YSSY	YSSY GDP-A 2000-0300	933	133	2,617	20.00	
YMML	YMML GDP-A 2000-1200	727	249	7,769	31.00	
YBBN	NONE	620	n/a	0	0.00	
YPPH-A	YPPH GDP-A 0030-1300	446	141	752	5.00	
YPPH-D	YPPH GDP-D 2130-0030		74	572	7.70	
Totals		2726	597	11,710	15.93	

\* denotes a revision has taken place

## ATFM Daily Plan Summary Notes

YSSY	Possible showers during the day.
YMML	Low cloud early not lifting until early afternoon and returning late evening.
YBBN	Chance of showers during the day. Nil other significant operational risks identified at this stage.
YPPH	GDP-D & GDP-A in effect due demand & slight rate reduction due staffing. RWY 03/21 closed as per NOTAM.
Other Significant	Refer NOTAM for latest estimated airborne traffic delay advice.
Change Summary:	[08:04pm] Version 1: Initial.

Teleconference Details 1800 062 923 Participant Code 7207 9651 Guest Code 3064#  NCC: 1800 020 626 atfmu@airservicesaustralia.com	CAP THREAT: 092215 - 100030 & 100715 - 100915	PRM: NOT REQ
	YMEN SLOT SCHEME: YES: 2300 - 0400	

## Issues expected to impact service delivery

Location	Issue/NOTAM Details
YSSY	C1518/24 RWY 07/25 CLSD EXC WITH 40MIN PN FM 05 081000 TO 05 091300 DAILY 1000-1300
YPPH	C332/24 RWY 03/21 CLOSED FM 05 092330 TO 05 100400

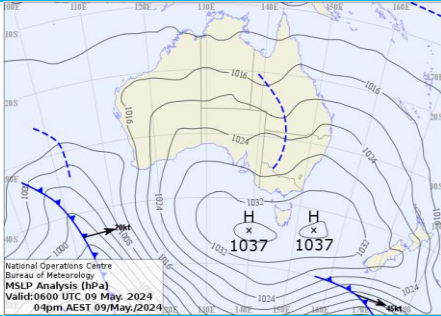
# Network Weather Overview

From now to +72 hours

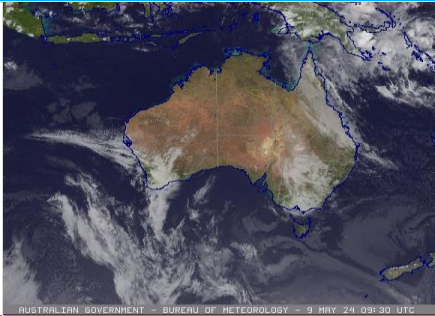
## Friday 10 May 2024

### Weather Overview

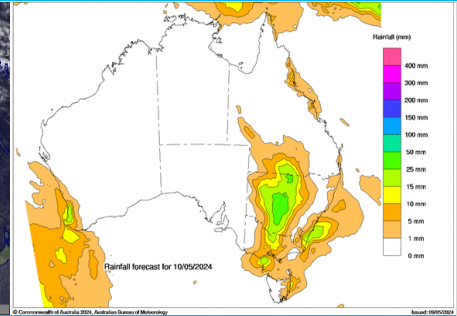
Mean Sea Level Pressure



Satellite Picture



Rainfall Outlook for tomorrow



### Weather impact risk assessment Major Airports

	Brisbane	Melbourne	Perth	Sydney
AM Friday	Shower, most likely late morning. Cloud 2000-3000ft. Light to moderate SSW to SE winds.	Risk of fog or very low cloud within the TMA. Rain. Light and variable winds.	Cloud 1500-2500ft. High-based showers and possible thunderstorms late morning. Moderate N to NE winds turning N to NW late morning.	Cloud 1500-2000ft. Showers increasing to rain late morning. Light SW to SE winds.
PM Friday	Showers, easing in evening. Cloud 2000-3000ft. Moderate SE winds.	Light rain. Low cloud 500-1000ft most likely in early afternoon and late evening. Light SE to SW winds.	Cloud 1500-2500ft. Showers and possible thunderstorms late morning. Moderate NW winds, turning light N to NE late evening. Wind possibly gusty with shower and storms.	Cloud 1000-1500ft. Rain. Chance of thunderstorm over the sea in the evening. Light E to SE winds turning NE in the evening.
AM Saturday	Showers offshore, moving onshore late morning. Cloud 2000-3000ft. Light S to SW winds, tending SE mid-morning.	Risk of fog, lifting to low cloud 500-1000ft late morning. Light W to NW winds.	Possible fog and low cloud early morning. Light NE winds.	Cloud 1000-2000ft. Rain, heavy at times. Chance of thunderstorm over the sea. Mostly NE winds.
PM Saturday	Showers, easing in evening. Cloud 1500-2500ft, lowering in showers. Light E to SE winds turning S late evening.	Possible high based showers in afternoon, mainly ranges. Light SW to SE winds tending W to NW in the late evening.	Cloud 2500-4000ft. Light showers. Light S to SW winds turning SE late evening.	Cloud 1500-2000ft, lowering in the evening. Rain. Chance of storms over the sea. Mostly NE winds.
AM Sunday	Fog patches W TMA. Showers offshore. Cloud 2000-3000ft. Light SW to NW winds.	Fog in the TMA, slight chance at the airport. Light W to NW winds.	CAVOK. Light to moderate E to NE winds.	Showers. Cloud 1000-3000ft. Light to moderate SW to NW winds or light and variable.
PM Sunday	Showers and the chance of a storm. Cloud 3000-4000ft. Light NW to NE winds.	CAVOK. Light S'yly winds, N'yly evening.	CAVOK. Possible high-based showers offshore. Light NE winds tending NW to SW during the afternoon.	Showers. Cloud 2000-3000ft. Light to moderate NE to SE winds.

### Significant other phenomena potentially affecting Australian FIRs

Volcanic Ash (VA) ≥ FL200	For the latest information refer to <a href="http://www.bom.gov.au/aviation/volcanic-ash/darwin-va-advisory.shtml">http://www.bom.gov.au/aviation/volcanic-ash/darwin-va-advisory.shtml</a>
Space Weather	A Geomagnetic Storm G3 has been observed – Strong planetary conditions, expecting to commence from 1000Z on the 10th of May. For the latest information refer to <a href="http://www.bom.gov.au/aviation/space-weather-advisories/">http://www.bom.gov.au/aviation/space-weather-advisories/</a>
Tropical Cyclones	Nil significant. For the latest information refer to <a href="http://www.bom.gov.au/cyclone/">http://www.bom.gov.au/cyclone/</a>

Weather risk assessment provided by NCC Meteorological Unit – Bureau of Meteorology  
Contact NCCMET for further detail or advice

Phone: 02 6268 4448  
Email: [nccmet@bom.gov.au](mailto:nccmet@bom.gov.au)

Detailed advice from major Airport MET CDM products available at Airservices NOC Portal, <https://www.airservicesaustralia.com/noc/>

## SYDNEY - YSSY GDP-A 2000-0300

Friday 10 May 2024

## ATFM-CDM Notes

## METCDM Notes:

- [1] 2000-1259: High pressure to the south with an easterly airstream across the area. An upper trough and low over western NSW is expected to deepen a low level trough offshore and move it onto the coast in the evening.
- [2] 2000-2159: Cloud 2000-3000ft. Showers mainly over the sea near a convergence zone offshore, with light W'ly surface winds most likely favouring RWY 34 at first. Given this and some uncertainty about how close to the coast these showers will be, a slightly lower MET CDM rate has been proposed as a compromise here due to the risk of these showers potentially impacting the approach or remaining further offshore and having less impact.
- [3] 2200-0759: Winds becoming S to SE with less showers expected on the approach to RWY 16 for the remainder of the morning and into the early afternoon. Higher x-factors applied when showers more likely to affect the approach, as the atmosphere begins to destabilise and winds turn more onshore. A corresponding slight increase in the cross wind component from late afternoon as winds turn E'ly.
- [4] 0800-1259: ILS MET CDM rate proposed again for the evening with the higher risk of reduced visibility/lower cloud to ILSC from 10Z as showers increase to rain and the cloud lowers. There is also an increase in instability over the sea which may result in isolated thunderstorms offshore late in the evening. E'ly winds may turn NE at some stage during the evening to favour a change to RWY 34, though there is some inconsistency across our guidance with this so RWY 16 maintained.

## NCC DLM Notes:

[Nil DLM Notes]

## SM Notes:

[1] 2000-2059: Staffing (XFactor Reason: Staffing)

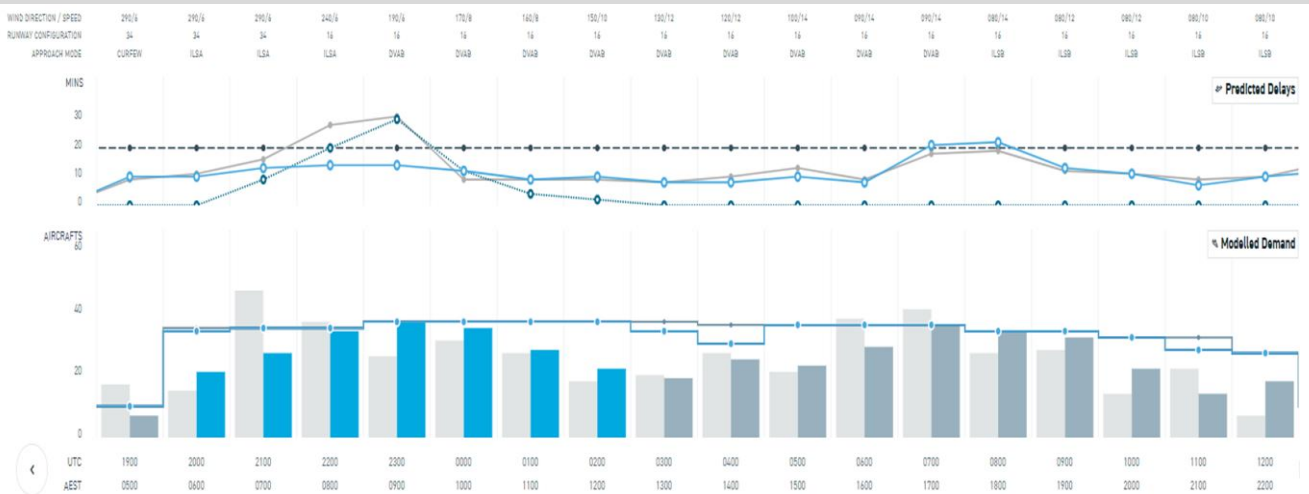
## GDP Notes

Possible showers during the day.

## Tabulated Data

Time (Hour UTC)	092000	092100	092200	092300	100000	100100	100200	100300	100400	100500	100600	100700	100800	100900	101000	101100	101200	0
Runway Mode	34 ILSA	34 ILSA	16 ILSA	16 DVAB	16 DVAB	16 DVAB	16 DVAB	16 DVAB	16 DVAB	16 DVAB	16 DVAB	16 DVAB	16 ILSB	16 ILSB	16 ILSB	16 ILSB	16 ILSB	
Rate	34	35	35	37	37	37	37	34	30	36	36	36	34	34	32	28	27	
Segmentation and Notes																		
METCDM Notes	1&2	1&2	1&3	1&3	1&3	1&3	1&3	1&3	1&3	1&3	1&3	1&3	1&4	1&4	1&4	1&4	1&4	0
Segmentation	1	1	1	1	1	1	1	1	2	2	2	2	2	2	2	2	2	

## Bar Graph



## MELBOURNE - YMML GDP-A 2000-1200

Friday 10 May 2024

## ATFM-CDM Notes

## METCDM Notes:

[1] 2000-0759: High pressure to the south and a trough to the north. Abundant low-level moisture and a weak eddy circulation in the morning is likely to produce low cloud 500-1000ft. RWY 27 proposed as a compromise between light and varying winds between N and W. At the same time higher level cloud overhead from the trough is expected to produce rain and possibly even lower cloud for at least the first half of the morning (x-factor applied for risk of IMCC, also a risk of IMC on RWY 34). Winds turn S to SE late morning, low cloud and rain persists into the early afternoon. Some temporary improvement mid to late afternoon to near VMC as the rain eases and mostly contracts west and north nearer the deepening trough over NSW and northwest Victoria.

[2] 0800-1359: Winds likely turn SW in the evening to favour RWY 16/27 and then W'ly late evening as an eddy reforms. A higher risk of low cloud below VMC during the evening, likely lowering from about 12Z.

## NCC DLM Notes:

[Nil DLM Notes]

## SM Notes:

[Nil SMTM Notes]

## GDP Notes

Low cloud early not lifting until early afternoon and returning late evening.

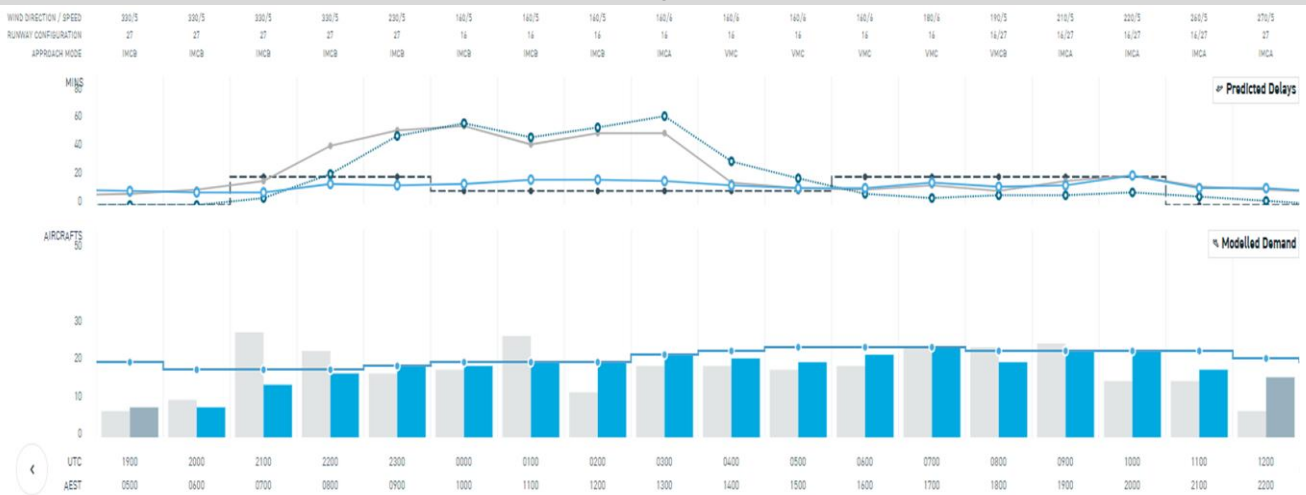
## Tabulated Data

Time (Hour UTC)	092000	092100	092200	092300	100000	100100	100200	100300	100400	100500	100600	100700	100800	100900	101000	101100	101200	101300
Runway Mode	27 IMCB	27 IMCB	27 IMCB	27 IMCB	16 IMCB	16 IMCB	16 IMCB	16 IMCA	16 VMC	16 VMC	16 VMC	16 VMC	16/27 VMCB	16/27 IMCA	16/27 IMCA	16/27 IMCA	27 IMCA	27 IMCB
Rate	18	18	18	19	20	20	20	22	23	24	24	24	23	23	23	23	21	20

## Segmentation and Notes

METCDM Notes	1	1	1	1	1	1	1	1	1	1	1	1	2	2	2	2	2	2
Segmentation	1	1	1	1	1	1	1	1	2	2	2	2	2	2	2	2	2	2

## Bar Graph



## Legend

- ERSA airborne delay threshold
- Ground delay (average)
- Initial airborne delay (10th PCTL)
- Latest airborne delay (10th PCTL)
- Final MET rate
- Final SM rate
- Final CDM rate
- Current demand
- Modelled demand (no GDP)
- Modelled demand (GDP)

## BRISBANE - Nil GDP

Friday 10 May 2024

## ATFM-CDM Notes

## METCDM Notes:

[1] 2000-1259: A ridge along the east Queensland coast with a moderate SE airstream to continue. Showers mostly over the eastern Bay and Islands initially, moving over the coast and inland in the afternoon when winds turn onshore. Showers contracting back to the sea at night. S to SW winds turning SE near midday, then returning S to SW during the evening.

[2] 0200-1259: The airstream is a little weaker and drier than Thursday with showers expected to be lighter and less frequent. Small chance of reduced visibility below VMC with a passing shower during this period.

## NCC DLM Notes:

[Nil DLM Notes]

## SM Notes:

[1] 2000-1259: Staffing (XFactor Reason: Staffing)

## GDP Notes

Chance of showers during the day. Nil other significant operational risks identified at this stage.

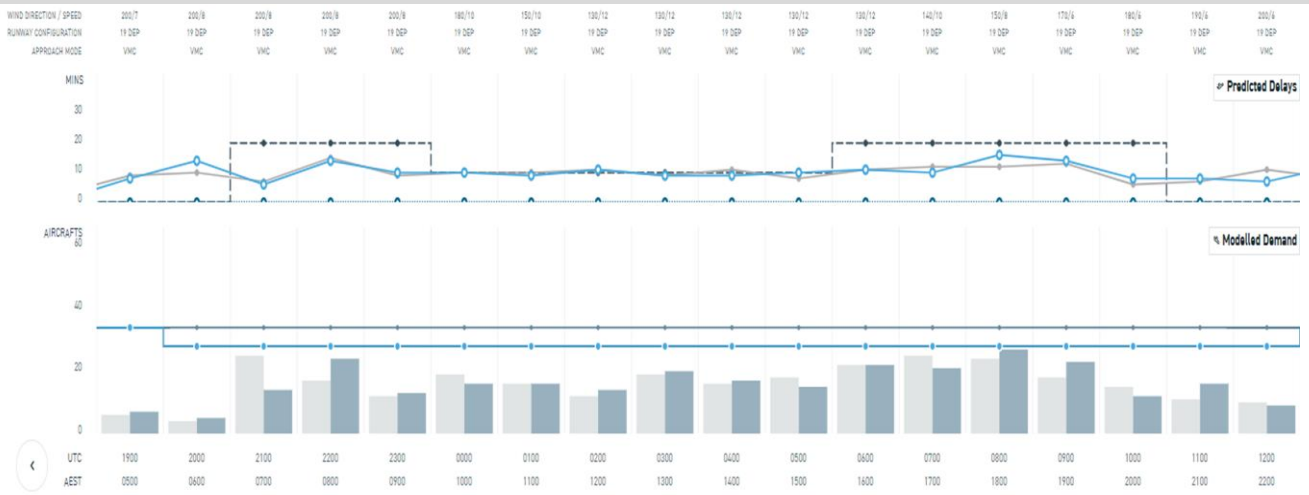
## Tabulated Data

Time (Hour UTC)	092000	092100	092200	092300	100000	100100	100200	100300	100400	100500	100600	100700	100800	100900	101000	101100	101200	
Runway Mode	19 VMC	19 VMC	19 VMC	19 VMC	19 VMC	19 VMC	19 VMC	19 VMC	19 VMC	19 VMC	19 VMC	19 VMC	19 VMC	19 VMC	19 VMC	19 VMC	19 VMC	
Rate	28	28	28	28	28	28	28	28	28	28	28	28	28	28	28	28	28	

## Segmentation and Notes

METCDM Notes	1	1	1	1	1	1	1&2	1&2	1&2	1&2	1&2	1&2	1&2	1&2	1&2	1&2	1&2	0
Segmentation	1	1	1	1	1	1	1	1	2	2	2	2	2	2	2	2	2	

## Bar Graph



## Legend

- ERSA airborne delay threshold
- Final CDM rate
- Ground delay (average)
- Current demand
- Initial airborne delay (10th PCTL)
- Modelled demand (no GDP)
- Latest airborne delay (10th PCTL)
- Modelled demand (GDP)
- Final MET rate
- Final SM rate

PERTH

Arrivals - YPPH GDP-A 0030-1300  
Departures - YPPH GDP-D 2130-0030

Friday 10 May 2024

## ATFM-CDM Notes

## METCDM Notes:

- [1] 2200-2359: Northerly flow ahead of a frontal system located offshore to the southwest, as well as showers expected within the western TMA in the morning. Early showers unlikely to affect the airport but 1500-2000ft cloud expected.
- [2] 2300-0359: RWY 03/21 closed. See NOTAM C332/24.
- [3] 0000-0859: A risk of storms apparent in the W TMA from as early as 00Z. Storms expected to be fast-moving with 35-45kt NW steering. X-factors applied to an IMCA approach 03-09Z, with the most likely time of storms coinciding with the passage of an upper trough in the late morning and afternoon.
- [4] 0900-1359: Storms remain possible within the TMA in the evening but with less risk in the wake of the upper trough. As such, an IMCA approach with a smaller x-factor has been applied. There is also the small risk of cloud below 1500ft from 12Z with winds turning more N'ly.

## NCC DLM Notes:

[Nil DLM Notes]

## SM Notes:

- [1] 0100-0159: En route staffing (XFactor Reason: Staffing)

## GDP Notes

GDP-D & GDP-A in effect due demand & slight rate reduction due staffing. RWY 03/21 closed as per NOTAM.

## Tabulated Data

Time (Hour UTC)	92100	092200	092300	100000	100100	100200	100300	100400	100500	100600	100700	100800	100900	101000	101100	101200	101300	
Runway Mode		03/06 IMCA	06 IMCA	06 IMCA	06 IMCA	06 IMCA	06 IMCA	03 IMCA	03 IMCA	03 IMCA	03 IMCA	03 IMCA	03 IMCA	03 IMCA	03 IMCA	03/06 IMCA	03/06 IMCA	
Rate-Arrs		24	22	22	20	22	20	20	20	20	20	20	22	22	22	22	22	
Rate-Deps	35	35	33	31														
Segmentation and Notes																		
METCDM Notes		1	1&2	2&3	2&3	2&3	2&3	3	3	3	3	3	4	4	4	4	4	
Segmentation		1	1	1	1	1	1	2	2	2	2	2	2	2	2	2	2	

## Bar Graph

