

**AIP SUPPLEMENT
(SUP)**

H50/24

Effective: 202404282330 UTC

AERONAUTICAL INFORMATION SERVICE,
AIRSERVICES AUSTRALIA, GPO BOX 367,
CANBERRA ACT 2601

For **DISTRIBUTION** queries, contact:
Email: aim_editorial@airservicesaustralia.com

For **CONTENT** queries regarding this SUP, contact:
Email: adf.airspace@defence.gov.au Phone: 02 6128 4858

**FAST JET ACTIVITY, QUEENSLAND
29 APRIL - 10 MAY 2024**

1. INTRODUCTION

- 1.1 This SUP cancels and replaces SUP H41/24 with with amendments to paras 2.1 and 2.2.1.
- 1.2 Elements of the Royal Australian Air Force (RAAF) will be conducting high tempo fast jet activity over the period 29 April - 10 May 2024.
- 1.3 This activity will involve a wide range of tactical flying activities with aircraft operating from Amberley aerodrome.
- 1.4 This AIP SUP describes the airspace, timings, diversion routes, access and procedures associated with this activity.

2. AIRSPACE

- 2.1 Airspace users should refer to Amberley (AWX) and Brisbane FIR (YBBB) NOTAM to confirm vertical limits and activation timings of Special Use Airspace (SUA).
- 2.2 During the activity period (excluding weekends) the following SUA will be activated by NOTAM.

2.2.1 Permanent Amberley Restricted Areas (AWX)

IDENT	VERTICAL LIMITS (AMSL)	HOURS
R639ABCD	10000 – FL600	NOTAM

- 2.2.2 Temporary Restricted Area (TRA). The following TRA is established in addition to permanent areas (refer Appendix 1):

TRA 'NIMBUS'

RA2

MIL FLYING

LATERAL LIMITS: 265722S 1485538E – 265738S 1494403E – 281000S 1494800E – 291523S 1500721E – 291523S 1492858E – 285713S 1485340E – 265722S 1485538E

VERTICAL LIMITS: 10000FT AMSL – FL600

HOURS OF ACTIVITY: NOTAM

CONTROLLING AUTHORITY: FLTCDR 452SQN AMBERLEY

ACTIVATION: NOTAM

2.3 Airspace Activation

2.3.1 Temporary SUA listed in paragraph 2.2.2, shall be activated in accordance with the following table:

Airspace Activation Windows		
Week One		
	Local Time (AEST)	Time (UTC)
MON 29 April – THU 02 May	0930 – 1200 daily	2330 – 0200 daily
	1415 – 1645 daily	0415 – 0645 daily
FRI 03 May	0930 – 1200	2330 – 0200
Week Two		
	Local Time (AEST)	Time (UTC)
MON 06 May	Nil	Nil
TUE 07 May – WED 08 May	0830 – 1030 daily	2230 – 0030 daily
	1330 – 1630 daily	0330 – 0630 daily
THU 09 May	0830 – 1030	2230 – 0030
	1400 – 1730	0400 – 0730
FRI 10 May	Nil	Nil

2.4 Permanent restricted and danger areas may also be activated for other Defence activities in accordance with normal NOTAM requirements.

-
- 2.5 General airspace enquiries prior to exercise start can be made to the Joint Airspace Control Cell on 02 6128 4858 during normal business hours (AEST) or via email adf.airspace@defence.gov.au.
- 2.6 During execution, please contact the relevant airspace Controlling Authority or Administering Authority.

3. MILITARY AIRCRAFT OPERATIONS

- 3.1 Within associated active Danger Areas, high-speed military jet aircraft may be conducting high-speed, abrupt manoeuvres not congruent with rules of the air and not in normal communication.
- 3.2 Traffic information will not be provided to or about aircraft operating in Danger Areas.
- #### **3.3 Noise and sensitive areas**
- 3.3.1 Military aircraft will plan to avoid known sensitive areas, and comply with Fly Neighbourly Advice.

4. ACCESS TO AIRSPACE

- 4.1 Access to exercise RA by non-exercise aircraft is not available except for:
- Aircraft operating in the preservation of life or property (MEDEVAC, FFR, POL, SAR)
 - Aircraft with a declared emergency.
- 4.2 All non-participating aircraft shall flight plan IAW diversion routing specified within section 5 of this SUP.
- 4.3 Aircraft operating within temporary SUA will not receive an Air Traffic Control Service.

5. DIVERSION ROUTES

- 5.1 The following routes are restricted during TRA 'NIMBUS' activation windows:
- H652
 - Q165
 - Q238
 - Y153
 - Y161

Pilots intending to operate on these routes must plan in accordance with the diversion routes specified in the following tables.

There will be nil coincident activation of Williamtown R570 airspace to facilitate diversion routing for TRA 'NIMBUS'.

Affected route	H652
Use diversion route	H652 ALAXU ROM SGE ESLOM GOPVO OVNOM H652
Purpose	Separation from hazardous activities in TRA Nimbus

Affected route	Q165
Use diversion route	Plan on Q165. Expect delays for levels above A100 until north of ROM.
Purpose	Separation from hazardous activities in TRA Nimbus

Affected route	Q238
Use diversion route	LASUD Q293 BINAG UBGAN DUPUG
Purpose	Traffic management due southbound diversion routes

Affected route	Y153
Use diversion route	Above A100 Y153 GOBAR 2538S 14850E ROM SGE ESLOM GOPVO OVNOM A100 and below Plan on Y153
Purpose	Separation from hazardous activities in TRA Nimbus

Affected route	Y161
Use diversion route	Y161 SGE ESLOM GOPVO OVNOM
Purpose	Traffic management due southbound diversion routes

5.2 Enquiries relating to diversion routes are to be directed to atm.director@airservicesaustralia.com

6. CANCELLATION

6.1 This SUP self-cancels at 202405090730 UTC.

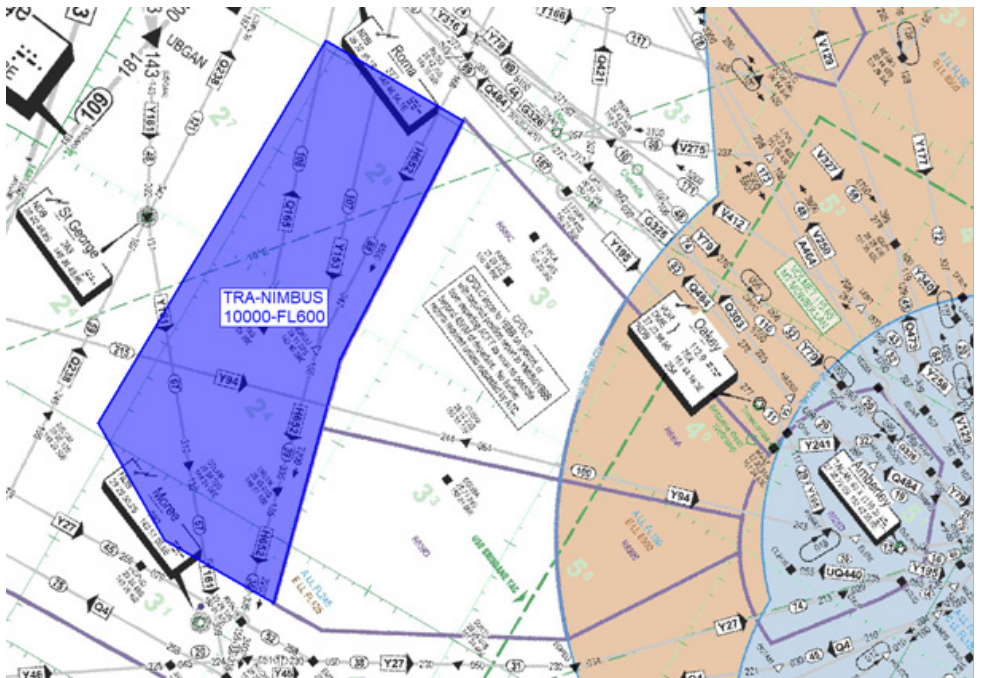
7. DISTRIBUTION

7.1 Airservices Australia website only.

Appendices

1. TRA 'NIMBUS'
2. Airspace Diversion Routes

1. TRA 'NIMBUS'



2. Airspace Diversion Routes

