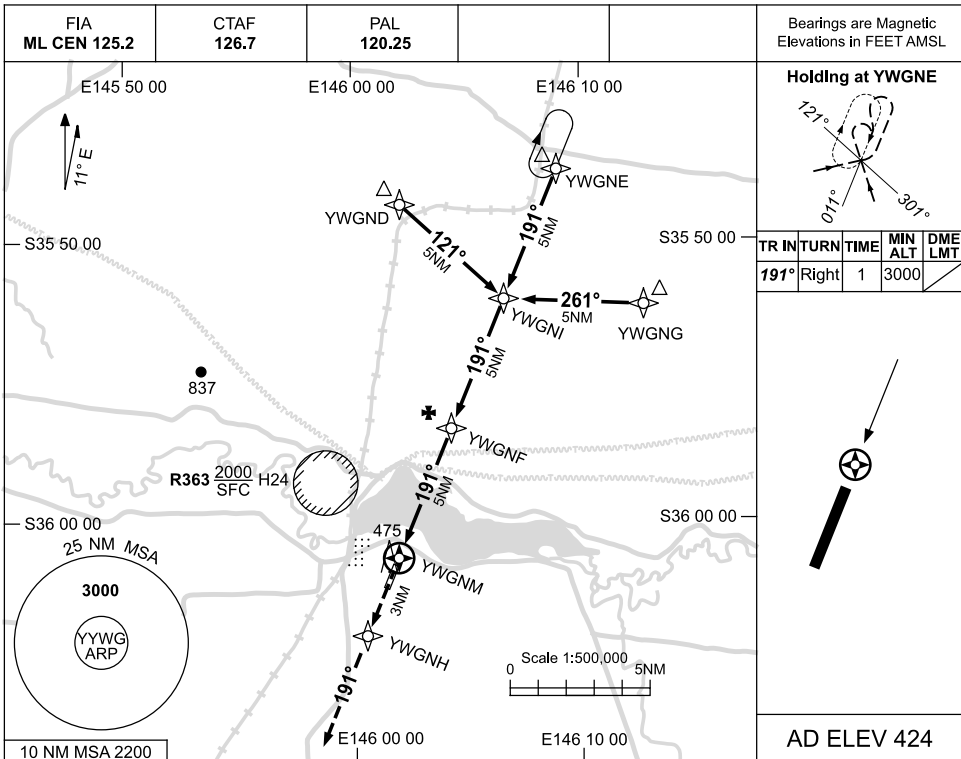


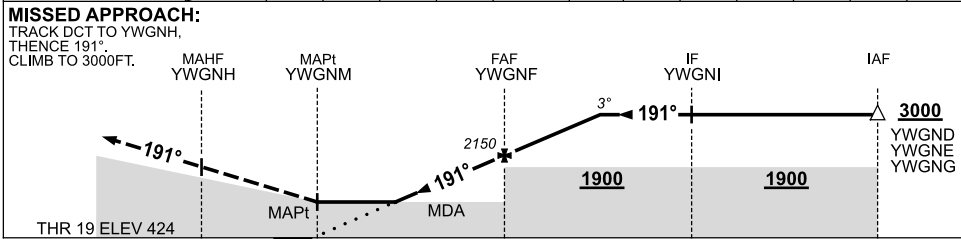
USE QNH

RNAV (GNSS) RWY 19
YARRAWONGA, VIC (YYWG)

25 AUG 2011



NM TO NEXT WPT	YWGNM	1.6	2	3	4	YWGNF	1	2	2.7			
ALT (3° APCH PATH)		1060	1200	1520	1830	2150	2470	2790	3000			



NOTES

1. MAX IAS:
INITIAL : 210KT.
2. **CAUTION:**
YCOR 15NM E.

CATEGORY	A	B	C	D
S-I GNSS	1060 (636-3.6)			NOT APPLICABLE
CIRCLING	1060 (636-2.4)		1220 (796-4.0)	
ALTERNATE	(1136-4.4)		(1296-6.0)	

Changes: SI-GNSS.

YYWGN01-128

