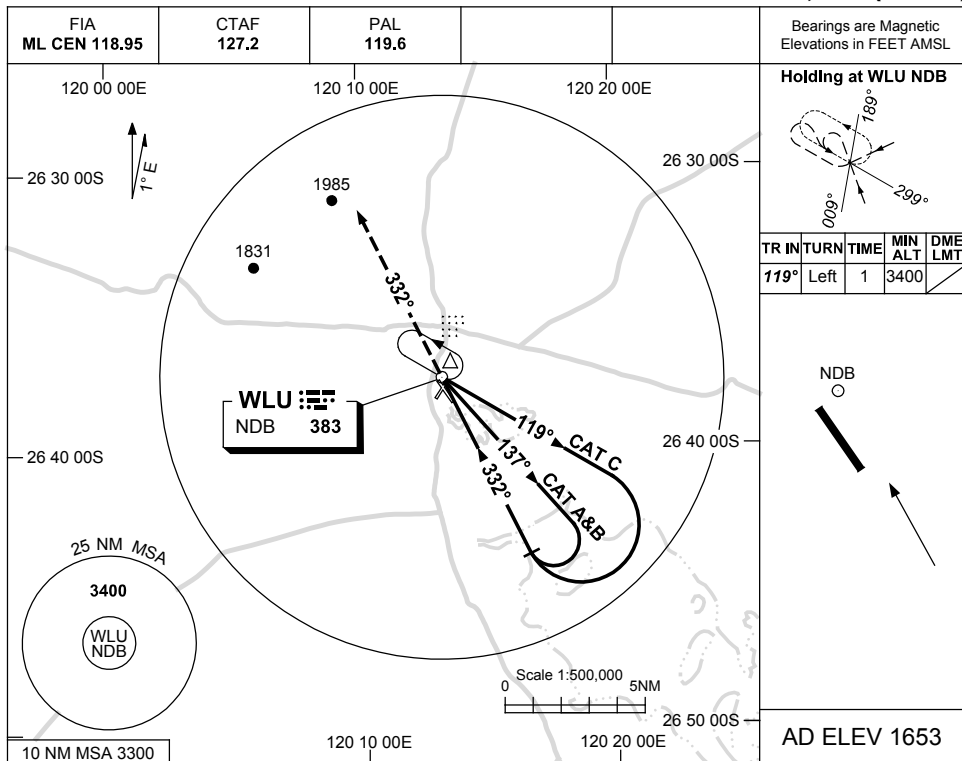


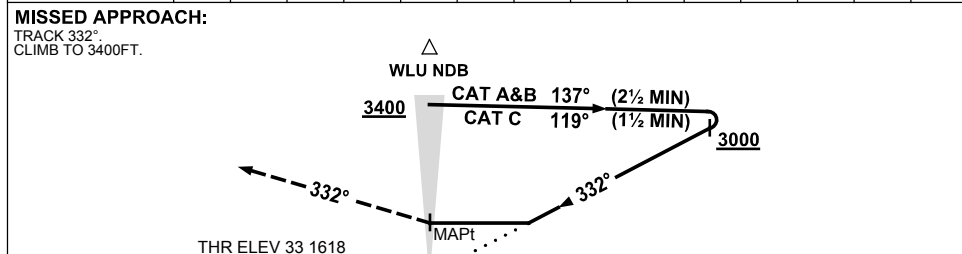
USE QNH

NDB RWY 33
WILUNA, WA (YWLU)

25 MAR 2021



DME DIST	NOT APPLICABLE								
ALT									



NM TO WLU NDB

NOTES

CATEGORY	A	B	C	D
S-I NDB	2250 (632-3.6)			NOT APPLICABLE
CIRCLING	2290 (637-2.4)	2450 (797-4.0)		
ALTERNATE	(1137-4.4)		(1297-6.0)	

1. MAX IAS:
INITIAL :
CAT A&B 140KT.
CAT C 210KT.
2. AWIS (PHONE):
08 6216 2641

Changes: AD ELEV, THR ELEV, MINIMA.

WLUNB01-166