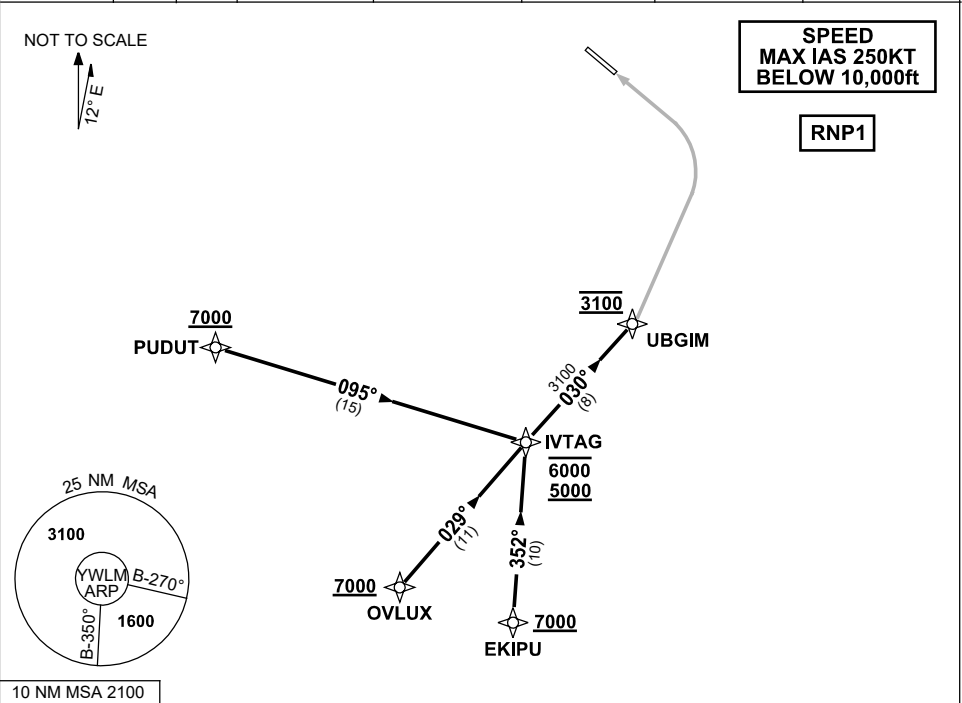


STANDARD ARRIVAL ROUTE (STAR)
IVTAG ONE ROMEO (RNAV) RWY 30
WILLIAMTOWN, NSW (YWLM)

30 NOV 2023

ATIS 134.45 316.1 365	ACD 130.35	SMC 121.8	TWR 118.3 280.9 243.0	APP H 133.3 261.4 L 135.7 293.4	FIA (AH) BN CEN 125.7	CTAF+AFRU (AH) AFRU+PAL (AH) 118.3	BRG are MAG ELEV in FEET AMSL
-----------------------------	---------------	--------------	-----------------------------	---------------------------------------	--------------------------	------------------------------------------	----------------------------------



TRANSITIONS:

PUDUT: FROM PUDUT TO IVTAG

- AT OR ABOVE 7000ft.
- Track 095° to IVTAG
- **Cross** IVTAG BTN 5000ft and 6000ft

OVLUX: FROM OVLUX TO IVTAG

- AT OR ABOVE 7000ft.
- Track 029° to IVTAG
- **Cross** IVTAG BTN 5000ft and 6000ft

EKIPU: FROM EKIPU TO IVTAG

- AT OR ABOVE 7000ft.
- Track 352° to IVTAG
- **Cross** IVTAG BTN 5000ft and 6000ft

THEN FOLLOW ARRIVAL INSTRUCTION

ARRIVAL: IVTAG ONE ROMEO RWY 30

- From IVTAG BTN 5000ft and 6000ft
- Track 030° to UBGIM
- **Cross** UBGIM AT 3100ft
- Track via RNP W RWY 30 (AR)

COMMUNICATIONS FAILURE: PROCEDURE IN IMC

- Squawk 7600, comply with vertical navigation requirements, but not below MSA.
- Track via the latest STAR clearance to the nominated runway, then fly the most suitable approach in accordance with ERSA EMERG Section 1.5.