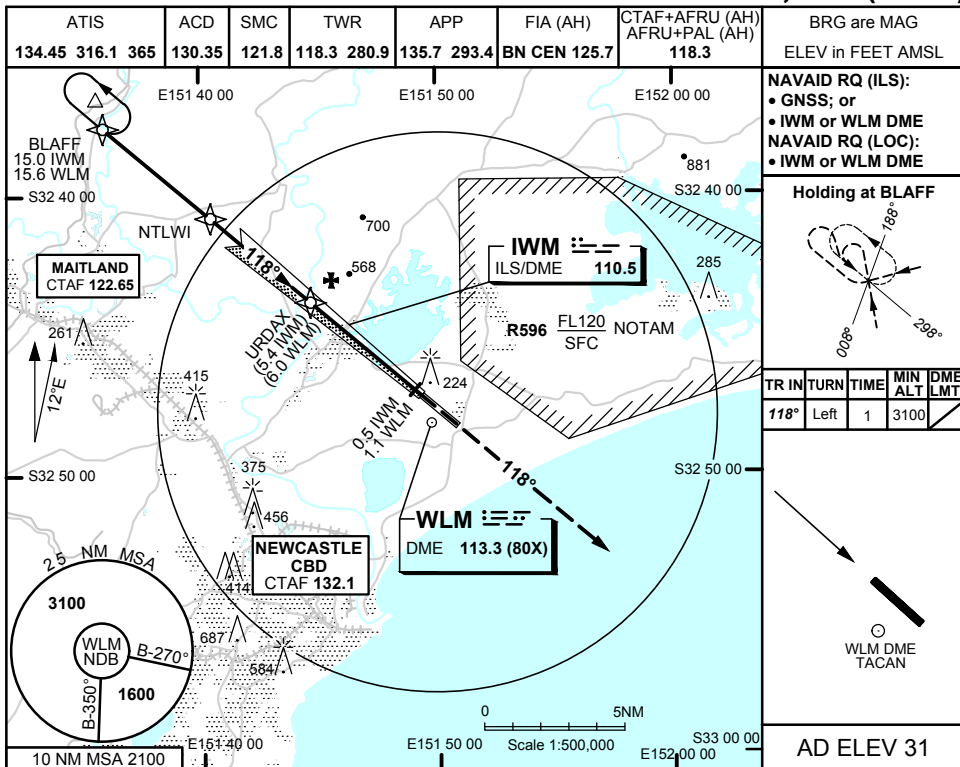


USE QNH

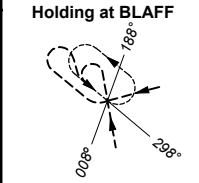
ILS-Z or LOC-Z RWY 12

5 NOV 2020

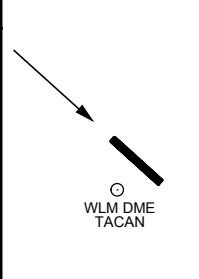
WILLIAMTOWN, NSW (YWLM)



NAVAID RQ (ILS):
 • GNSS; or
 • IWM or WLM DME
NAVAID RQ (LOC):
 • IWM or WLM DME

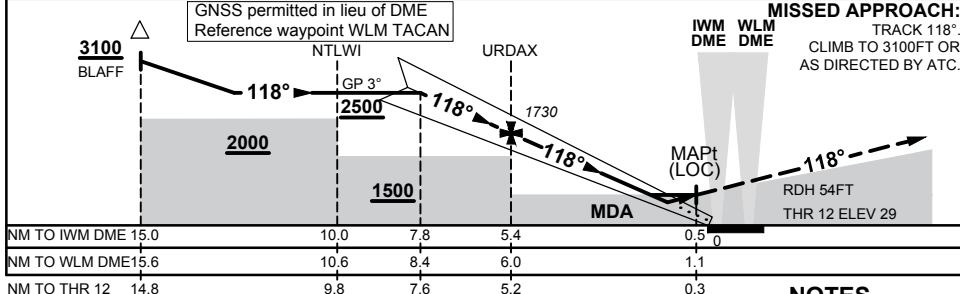


TR	IN	TURN	TIME	MIN ALT	DME LMT
118°	Left	1	3100		



AD ELEV 31

DIST BY IWM DME	7.8	7	6	5.4	5	4	3	2	1.7				
DIST BY WLM DME	8.4	7.6	6.6	6	5.6	4.6	3.6	2.6	2.3				
ALT (3° APCH PATH)	2500	2260	1940	1730	1620	1300	980	660	570				



MISSED APPROACH:
 TRACK 118°. CLIMB TO 3100FT OR AS DIRECTED BY ATC.

CATEGORY	A	B	C	D
S-I ILS	329 (300 - 1.2) (VIS 0.8 WITH ACTUAL QNH)			
S-I LOC	570 (539 - 2.2)			
CIRCLING	660 (629 - 2.4)	760 (729 - 4.0)	1060 (1029 - 5.0)	
ALTERNATE	(1129 - 4.4)	(1229 - 6.0)	(1529 - 7.0)	

NOTES
 1. ACFT MAY BE RADAR VECTORED TO FINAL APCH.

Changes: PJE SYMBOL REMOVED

WLMII01-165