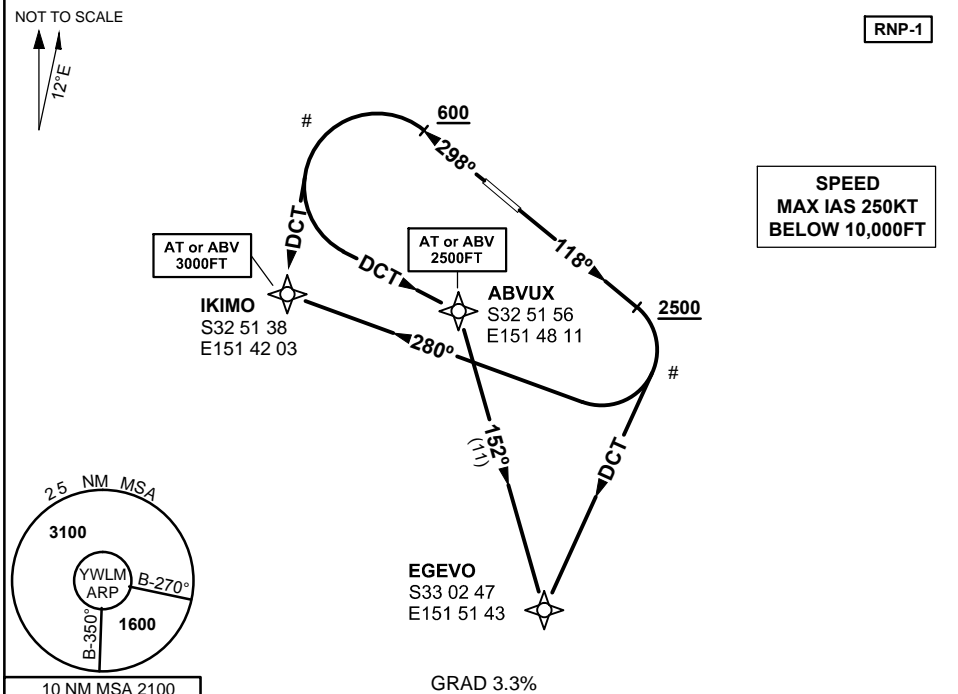


**STANDARD INSTRUMENT DEPARTURE (SID)  
RWY12/30 SOUTH (RNAV)  
WILLIAMTOWN, NSW (YWLM)**

**16 AUG 2018**

ATIS 134.45 316.1 365	ACD 130.35	SMC 121.8	TWR 118.3 280.9	APP 135.7 293.4	FIA (AH) BN CEN 125.7	CTAF+AFRU (AH) AFRU+PAL (AH) 118.3	BRG are MAG ELEV in FT AMSL
--------------------------	---------------	--------------	--------------------	--------------------	--------------------------	--	--------------------------------



<p><b>IKIMO ONE DEPARTURE</b> <b>EGEVO ONE DEPARTURE</b></p> <p><b>RWY 12</b></p> <ul style="list-style-type: none"> <li>Track 118°, AT or ABV 2500FT, turn RIGHT # MAX IAS 210KT IN TURN</li> </ul> <p>FOR IKIMO</p> <ul style="list-style-type: none"> <li>Track 280° to IKIMO, thence as cleared</li> </ul> <p>FOR EGEVO</p> <ul style="list-style-type: none"> <li>Track DCT to EGEVO, thence as cleared</li> </ul>	<p><b>RWY 30</b></p> <ul style="list-style-type: none"> <li>Track 298°</li> <li>AT or ABV 600FT, but not before DER, turn LEFT # MAX IAS 210KT IN TURN</li> </ul> <p>FOR IKIMO</p> <ul style="list-style-type: none"> <li>Track DCT to IKIMO, thence as cleared <b>Cross</b> IKIMO AT or ABV 3000FT</li> </ul> <p>FOR EGEVO</p> <ul style="list-style-type: none"> <li>Track DCT to ABVUX <b>Cross</b> ABVUX AT or ABV 2500FT</li> <li>Turn RIGHT, track 152° to EGEVO, thence as cleared</li> </ul>
---	--

**COMMUNICATIONS FAILURE PROCEDURE**

- On recognition of communication failure
- Squawk 7600
  - Maintain last assigned vector for two minutes and, if necessary, climb to minimum safe altitude to maintain terrain clearance, then
  - Proceed in accordance with the latest ATC route clearance acknowledged.

Changes: SPEED REST



**GLOBAL AIRSPACE SOLUTIONS** pt

WLM DP06-156