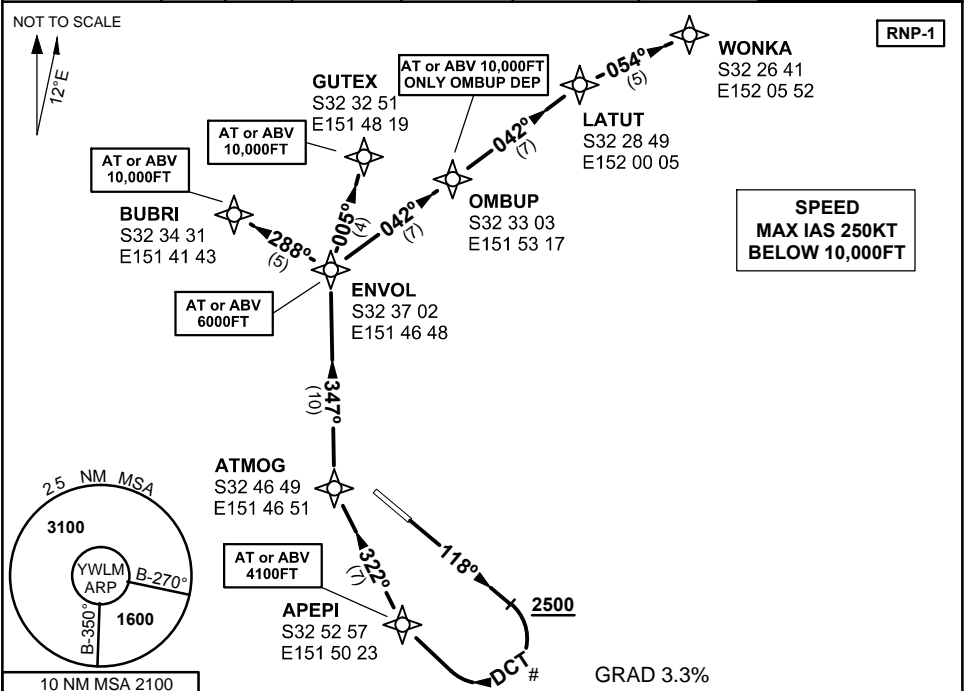


**STANDARD INSTRUMENT DEPARTURE (SID)
RWY 12 BRAVO (RNAV)
WILLIAMTOWN, NSW (YWLM)**

16 AUG 2018

ATIS 134.45 316.1 365	ACD 130.35	SMC 121.8	TWR 118.3 280.9	APP 135.7 293.4	FIA (AH) BN CEN 125.7	CTAF+AFRU (AH) AFRU+PAL (AH) 118.3	BRG are MAG ELEV in FT AMSL
--------------------------	---------------	--------------	--------------------	--------------------	--------------------------	------------------------------------------	--------------------------------



BUBRI ONE BRAVO	DEPARTURE DEPARTURE DEPARTURE	LATUT ONE BRAVO	DEPARTURE DEPARTURE
GUTEX ONE BRAVO		WONKA ONE BRAVO	
OMBUP ONE BRAVO			

RWY 12

- Track 118°
- AT or ABV 2500FT turn RIGHT # MAX IAS 210KT IN TURN
- Track DCT APEPI
- Cross** APEPI AT or ABV 4100FT
- Turn RIGHT, track 322° to ATMOG
- Turn RIGHT, track 347° to ENVOL
- Cross** ENVOL AT or ABV 6000FT

FOR BUBRI

- Turn LEFT, track 288° to BUBRI, thence as cleared
- Cross** BUBRI AT or ABV 10,000FT

FOR GUTEX

- Turn RIGHT, track 005° to GUTEX, thence as cleared
- Cross** GUTEX AT or ABV 10,000FT

FOR OMBUP

- Turn RIGHT, track 042° to OMBUP, thence as cleared
- Cross** OMBUP AT or ABV 10,000FT

FOR LATUT

- Turn RIGHT, track 042° to LATUT, thence as cleared

FOR WONKA

- Turn RIGHT, track 042° to LATUT
- Turn RIGHT, track 054° to WONKA, thence as cleared

COMMUNICATIONS FAILURE PROCEDURE

- On recognition of communication failure
- Squawk 7600
 - Maintain last assigned vector for two minutes and, if necessary, climb to minimum safe altitude to maintain terrain clearance, then
 - Proceed in accordance with the latest ATC route clearance acknowledged.

Changes: SPEED REST



GLOBAL AIRSPACE SOLUTIONS pt

WLMDP04-156