

**STANDARD INSTRUMENT DEPARTMENT (SID)  
WILLY THREE DEPARTURE (RADAR)  
WILLIAMTOWN, NSW (YWLM)**

5 NOV 2020

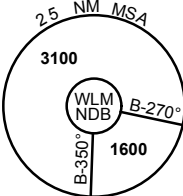
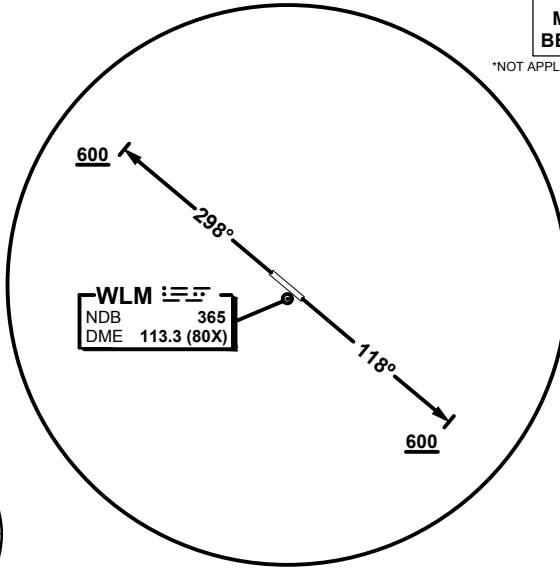
ATIS 134.45 316.1 365	ACD 130.35	SMC 121.8	TWR 118.3 280.9	APP 135.7 293.4	FIA (AH) BN CEN 125.7	CTAF+AFRU (AH) AFRU+PAL (AH) 118.3	BRG are MAG ELEV in FEET AMSL
--------------------------	---------------	--------------	--------------------	--------------------	--------------------------	--	----------------------------------

NOT TO SCALE



**SPEED  
MAX IAS 250KT  
BELOW 10,000FT\***

\*NOT APPLICABLE TO MILITARY AIRCRAFT



10 NM MSA 2100

**WILLY THREE DEPARTURE (RADAR)**

**RWY 12**

- GRAD 3.3%
- Track 118°
- AT or ABV 600FT, but not before DER, turn to assigned heading or track.

**RWY 30**

- GRAD 3.3%
- Track 298°
- AT or ABV 600FT, but not before DER, turn to assigned heading or track.

**COMMUNICATIONS FAILURE PROCEDURE**

On recognition of communication failure:

- Squawk 7600
- Maintain last assigned vector for two minutes and, if necessary, climb to minimum safe altitude to maintain terrain clearance, then
- Proceed in accordance with the latest ATC route clearance acknowledged

Changes: NOTE IAS

WLM DP01-165

