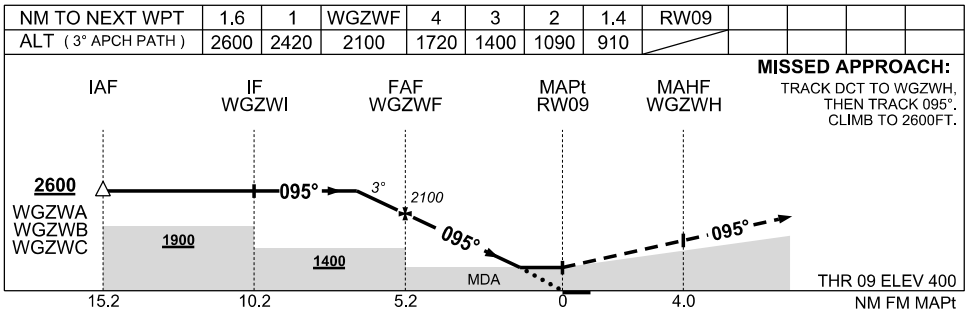
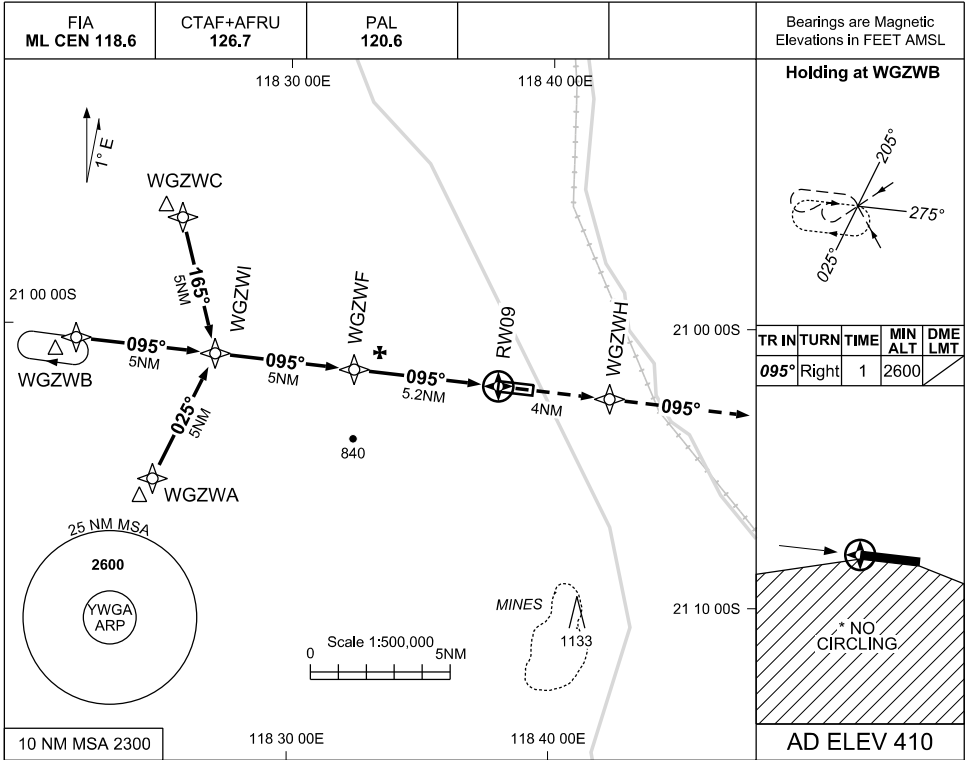


USE QNH RNAV (GNSS) RWY 09
PORT HEDLAND / WODGINA, WA (YWGA)

5 NOV 2020



NOTES

1. MAX IAS : INITIAL : 210KT
- *2. NO CIRCLING SOUTH OF RWY 09/27

CATEGORY	A	B	C	D
LNAV	910 (510-3.0)			NOT APPLICABLE
CIRCLING *	1010 (600-2.4)	1110 (700-4.0)		
ALTERNATE	(1100-4.4)	(1200-6.0)		

Changes: FROM SUP H67/20

WGAGN01-165

