

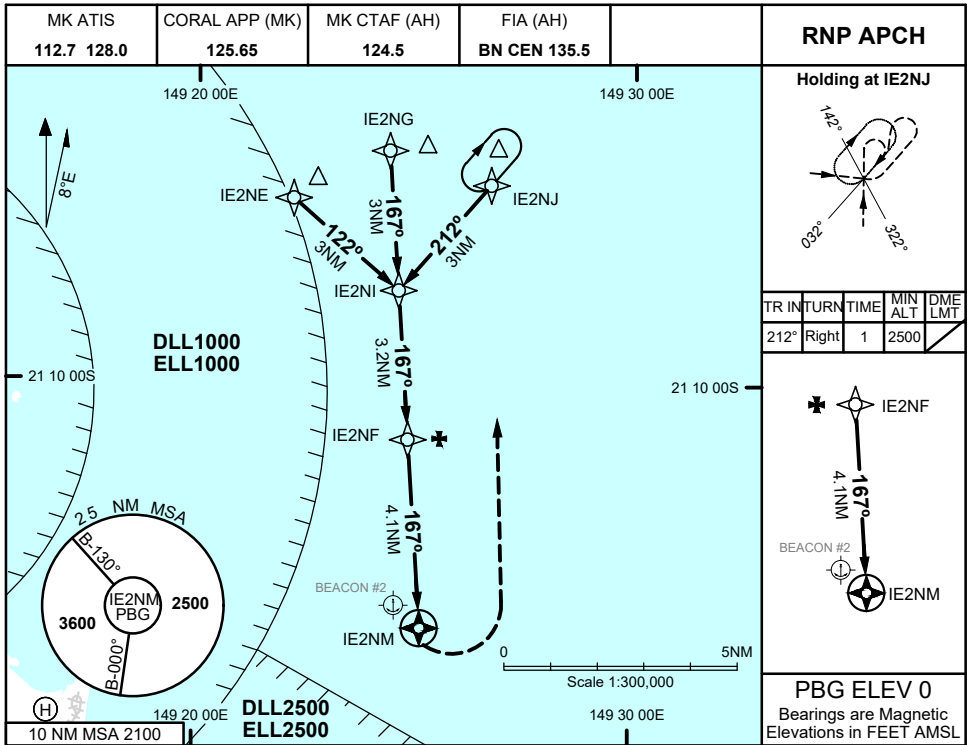
FOR CASA APPROVED OPERATORS ONLY

USE QNH

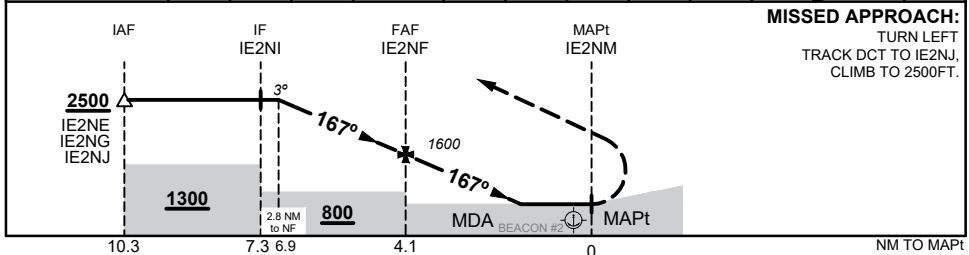
RNP 167

1 DEC 2022

VICTOR ISLAND EAST, QLD (YVIE)



| | | | | | | | | | | | | |
|--------------------|------|------|------|-------|------|------|-----|-----|-----|-----|-------|--|
| NM TO NEXT WPT | 2.8 | 2 | 1 | IE2NF | 4 | 3 | 2 | 1.1 | 1 | 0.9 | IE2NM | |
| ALT (3° APCH PATH) | 2500 | 2240 | 1920 | 1600 | 1570 | 1250 | 930 | 630 | 610 | 580 | | |



NOTES

- MAPt LOCATED 0.5 NM FROM BEACON #2 (S21 14 48, E149 24 36)
- CAUTION: REMOTE ALTIMETER SETTING SOURCE YBMK.
- CAUTION: PROCEDURE IS OVERLAID BY PROCEDURES AT YBMK. AIRCRAFT SEPARATION NOT ASSURED.

| CATEGORY | H |
|-----------------|-----------------|
| LNAV (YBMK QNH) | 580 (580 - 2.4) |
| LNAV (AREA QNH) | 630 (630 - 2.4) |
| ALTERNATE | (1130 - 4.4) |

Changes: CORAL APP FREQ

VIEGN01-173

FOR CASA APPROVED OPERATORS ONLY

