

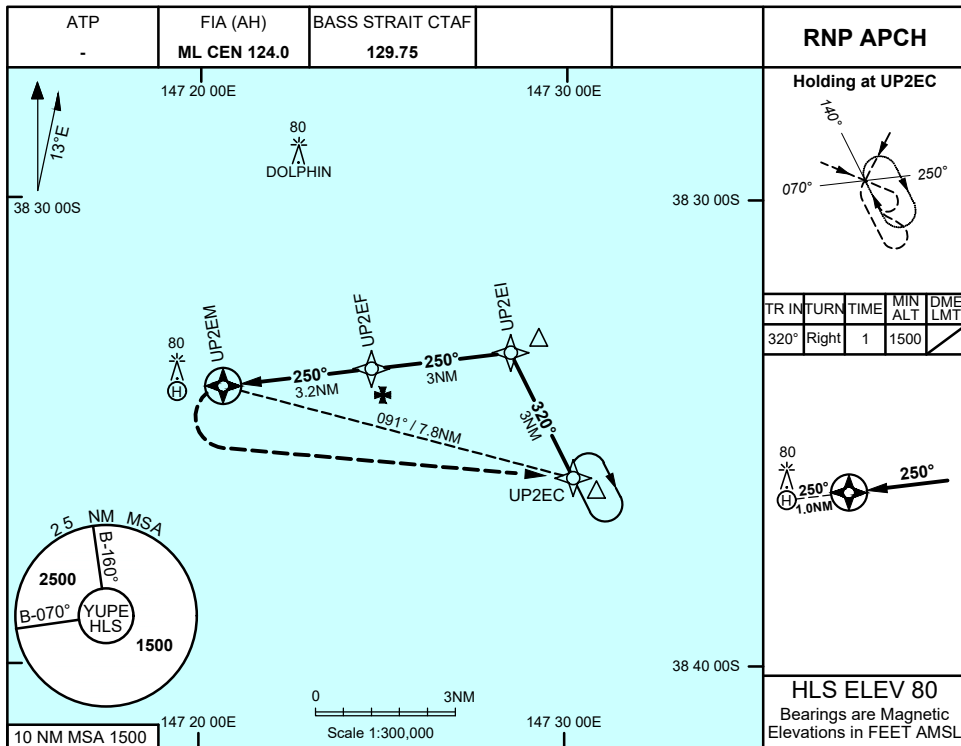
FOR CASA APPROVED OPERATORS ONLY

USE QNH

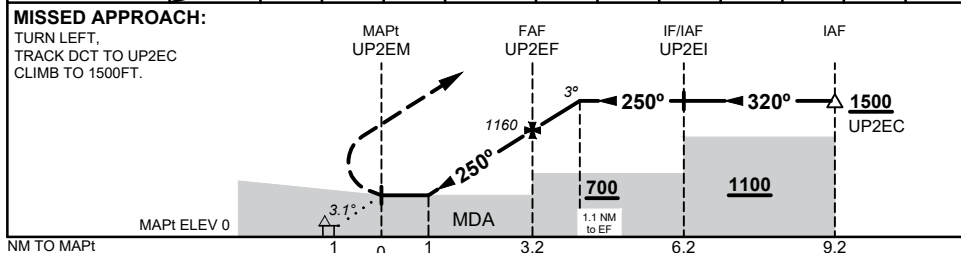
RNP 250

23 MAR 2023

PERCH PLATFORM, VIC (YUPE)



NM TO NEXT WPT	UP2EM	1	2	3	UP2EF	1	1.1			
ALT (3° APCH PATH)		460	780	1100	1160	1480	1500			



NOTES

1. MAX IAS:
HOLDING: 120 KT
INITIAL, INTERMEDIATE: 120KT
FINAL, MISSED APP: 90KT
2. KEY LEAD IN FEATURES:
PLATFORM AT HLS
- *3. MDH BASED ON MAPt ELEV

CATEGORY	H
LNAV (NON-VAA, 4.2% MAP), AREA QNH	460 (460* - 1.9)
ALTERNATE	N/A

Changes: CHART TITLE, WPT IDENTs, LOCATION NAME, Editorial

UPEGN02-174

FOR CASA APPROVED OPERATORS ONLY

