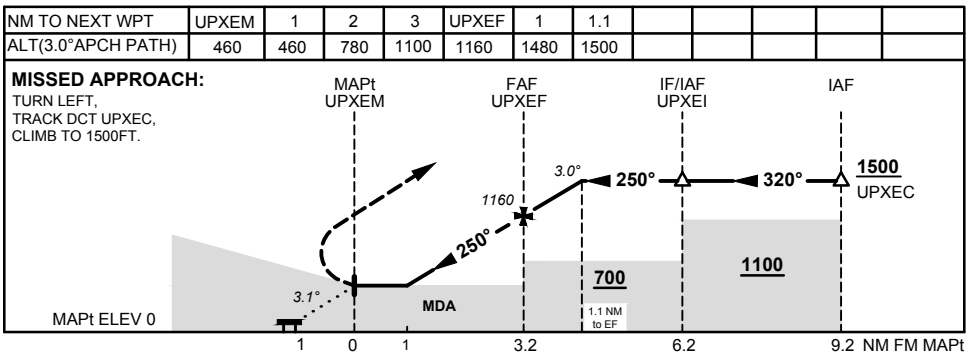
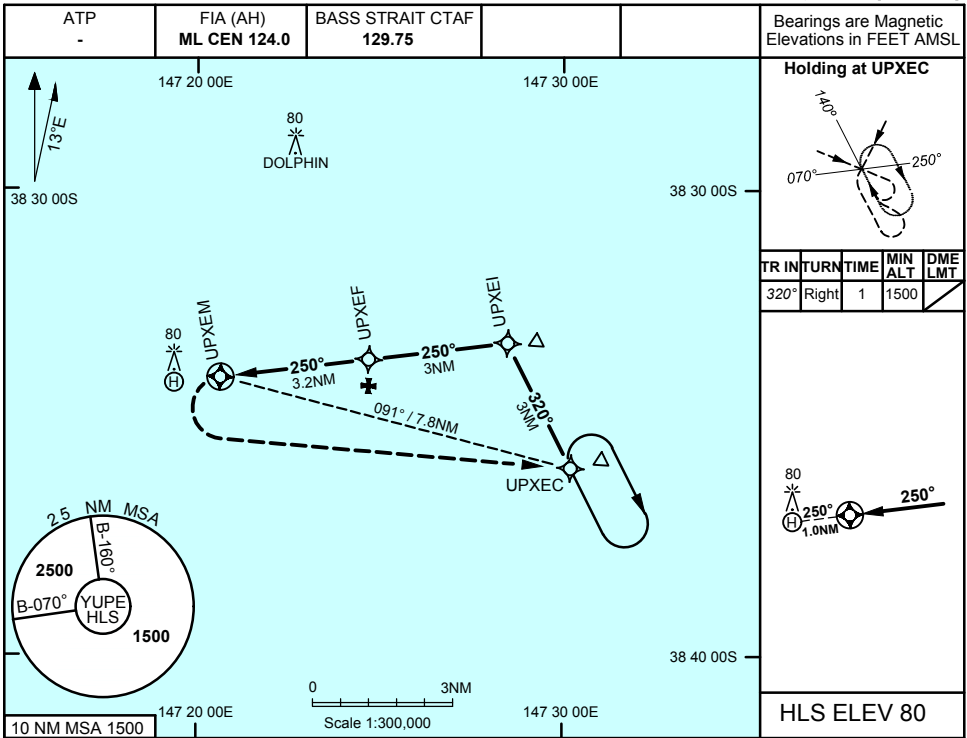


FOR CASA APPROVED OPERATORS ONLY

USE QNH

RNAV(GNSS) 250
PERCH, VIC (YUPE)

7 NOV 2019



NOTES

CATEGORY	H
LNAV (NON-VAA, 4.2% MAP), AREA QNH	460 (460* - 1.9)
ALTERNATE	N/A

1. MAX IAS:
HOLDING: 120KT
INITIAL, INTERMEDIATE: 120KT
FINAL, MISSED APP: 90KT.
2. KEY LEAD IN FEATURES:
PLATFORM AT HLS
- *3. MDH BASED ON MAPt ELEV

Changes: MDH, Editorial

UEPNG02-161

FOR CASA APPROVED OPERATORS ONLY