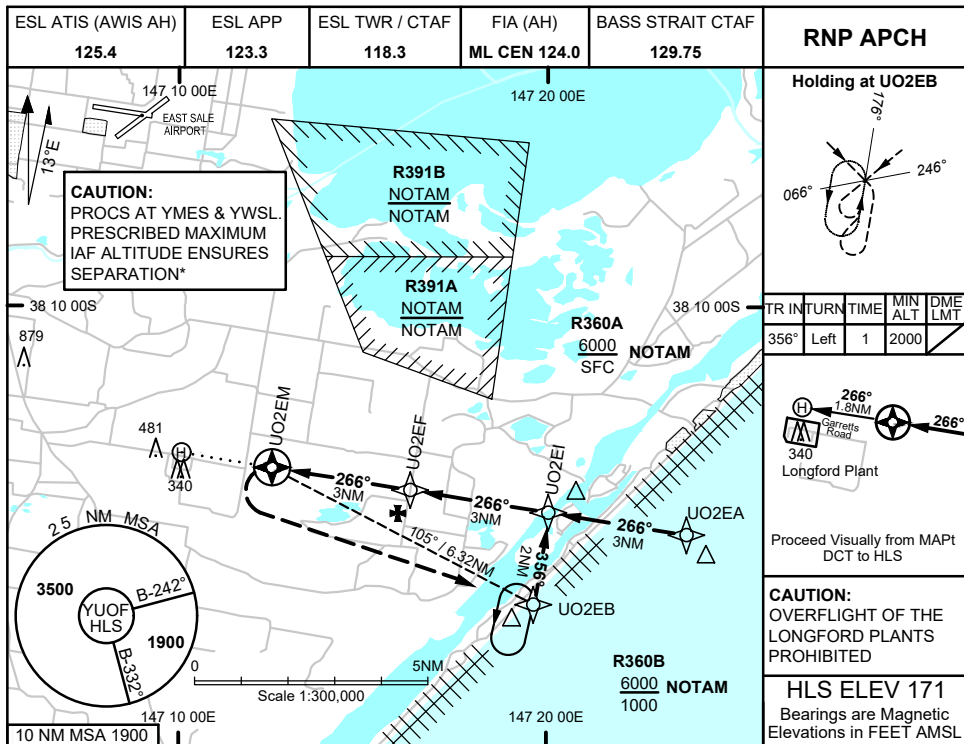


# FOR CASA APPROVED OPERATORS ONLY USE QNH

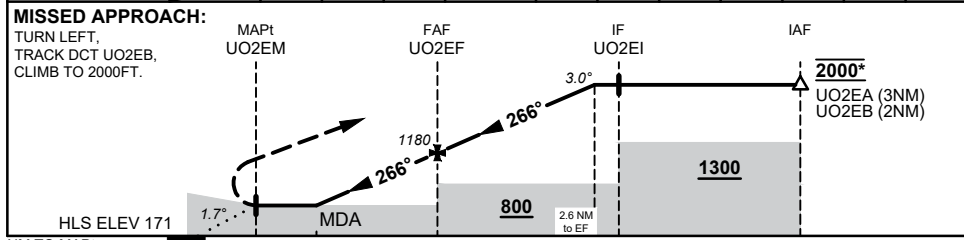
RNP 266

**30 NOV 2023**

## LONGFORD HELIPORT, VIC (YUOF)



NM TO NEXT WPT	UO2EM	1	1.3	2	UO2EF	1	2	2.6		
ALT (3° APCH PATH)		540	620	860	1180	1500	1810	2000		



### NOTES

1. MAX IAS:  
HOLDING: 90KTS  
ALL SEGMENTS: 90KTS
2. CLEARANCE REQUIRED WHEN R359 ACTIVE
3. KEY LEAD IN FEATURES: GARRETS ROAD, LONGFORD PLANTS AND GAS FLARES LEFT OF MAPt.

CATEGORY	H
LNAV (NON VAA) USING ESL QNH (4.2% MAP)	<b>540</b> (369 - 3.4)
LNAV (NON VAA, 4.2% MAP)	<b>620</b> (449 - 3.4)
CIRCLING	NOT APPLICABLE
ALTERNATE	(949 - 5.4)

Changes: R360A, R360B

UOFGN01-177

## FOR CASA APPROVED OPERATORS ONLY