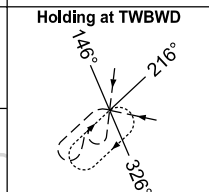
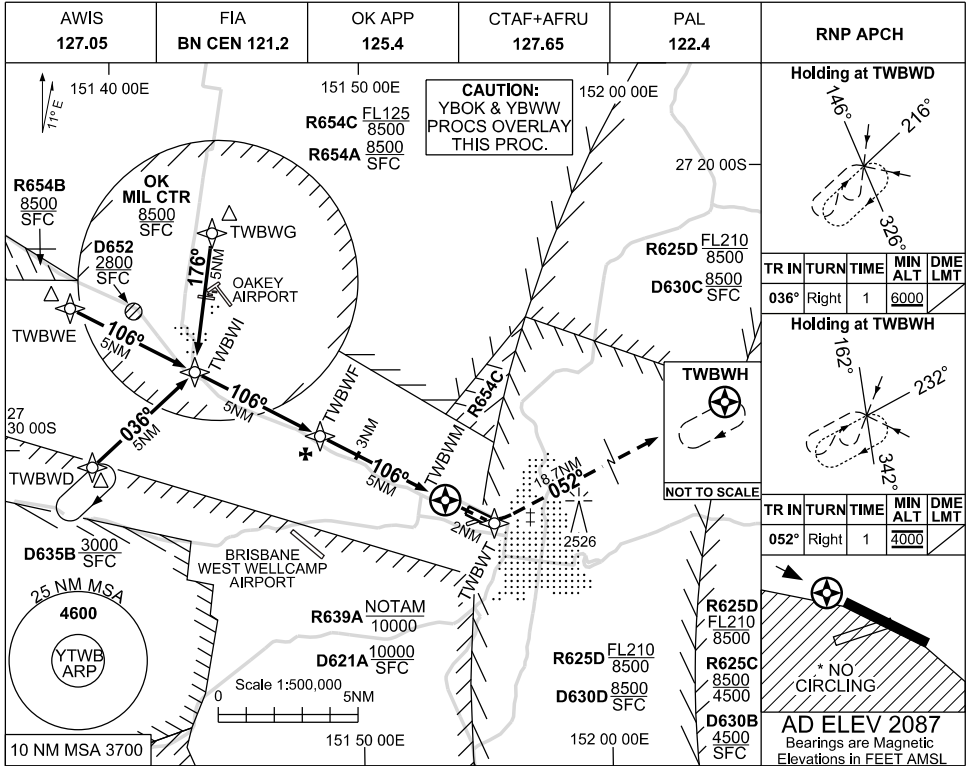


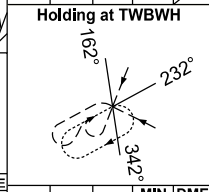
USE QNH

RNP RY 11
TOOWOOMBA, QLD (YTWB)

9 SEP 2021



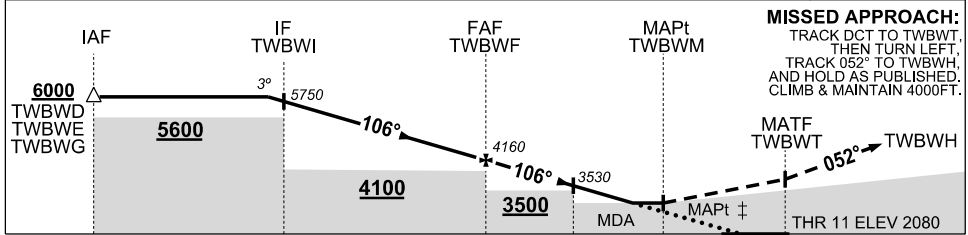
TR IN	TURN	TIME	MIN ALT	DME LMT
036°	Right	1	6000	



TR IN	TURN	TIME	MIN ALT	DME LMT
052°	Right	1	4000	



NM TO NEXT WPT	0.8	TWBWI	4	3	2	1	TWBWF	4	3	2	1	0.3	TWBWM
ALT (3° APCH PATH)	6000	5750	5440	5120	4800	4480	4160	3840	3530	3210	2890	2680	



MISSED APPROACH:
TRACK DCT TO TWBWT,
THEN TURN LEFT,
TRACK 052° TO TWBWH,
AND HOLD AS PUBLISHED.
CLIMB & MAINTAIN 4000FT.

MATF TWBWT
THR 11 ELEV 2080

NOTES

- MAX IAS :
TWBWD HOLDING: 210KT.
TWBWH HOLDING: 180KT.
INITIAL : 210KT.
MAP TURN : 180KT.
- NO CIRCLING
SOUTH OF RWY 11/29.
- PRD OPR HR VIA NOTAM
EXCEPT
D652: H24.
D630C: SEE ERSA.
D635B: HJ

CATEGORY	A	B	C	D
LNAV	2680 (593 - 3.4)			NOT APPLICABLE
CIRCLING *	2960 (873 - 2.4)		NOT AUTHORISED	
ALTERNATE	(1373 - 4.4)		(1473 - 6.0)	

Changes: CHART TITLE, PBN SPECIFICATION BOX, D635B, Editorial.

TWBG01-168