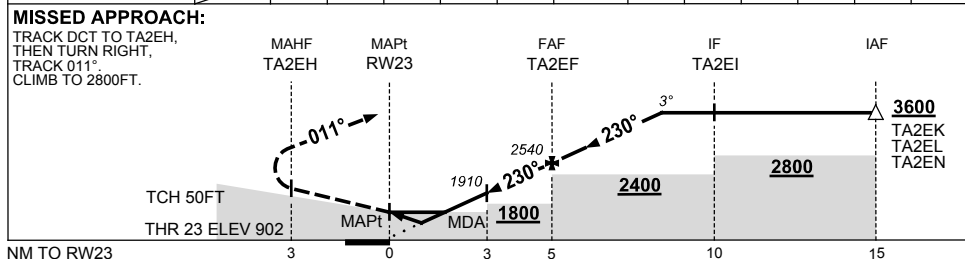
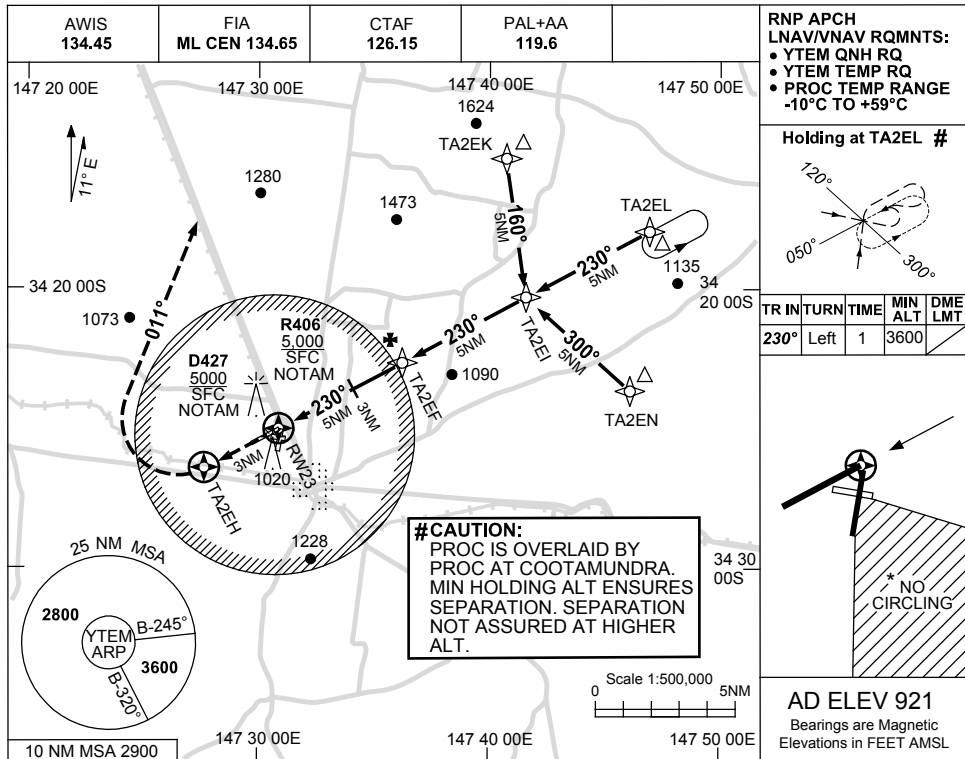


USE QNH

RNP RWY 23  
**TEMORA, NSW (YTEM)**

15 JUN 2023



CATEGORY	A	B	C	D
LNAV/VNAV		1280 (378-2.1)		
LNAV		1470 (568-3.2)		
CIRCLING *	1710 (789-2.4)	1810 (889-4.0)	1810 (889-5.0)	
ALTERNATE	(1289-4.4)	(1389-6.0)	(1389-7.0)	

1. MAX IAS: INITIAL : 210KT.  
 \*2. NO CIRCLING IN SECTOR SOUTH EAST OF RWYS 27 & 36.

Changes: START ALT,MDA,MISSED APCH TRACK,CHART TITLE & WPT NAMING CONVENTION,Editorial. TEMGN03-175