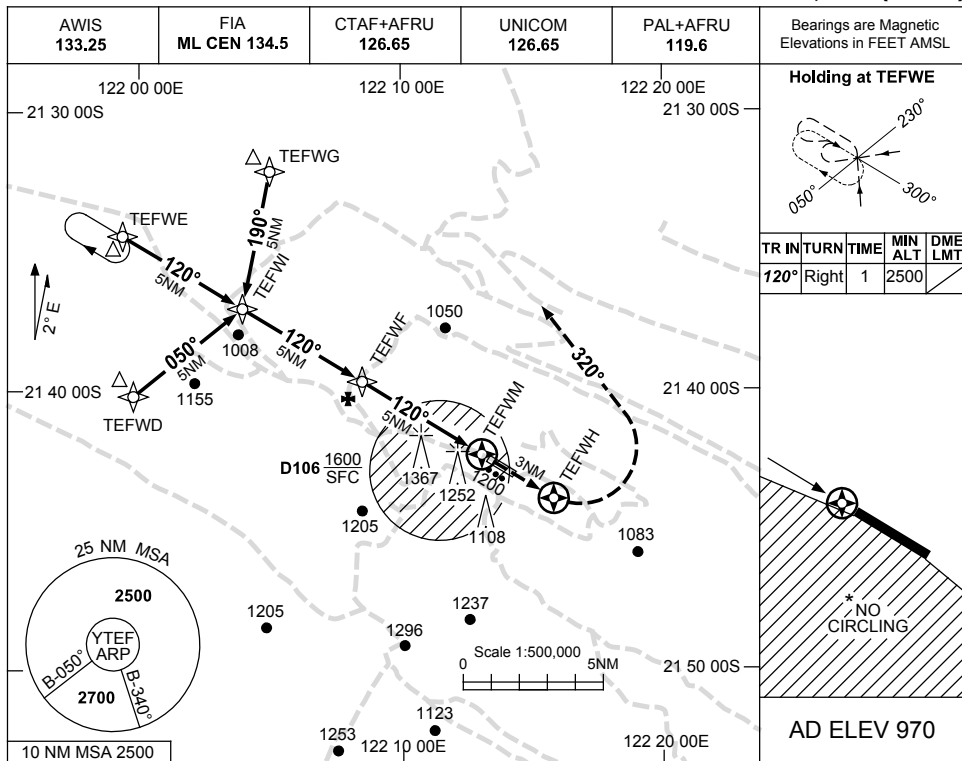


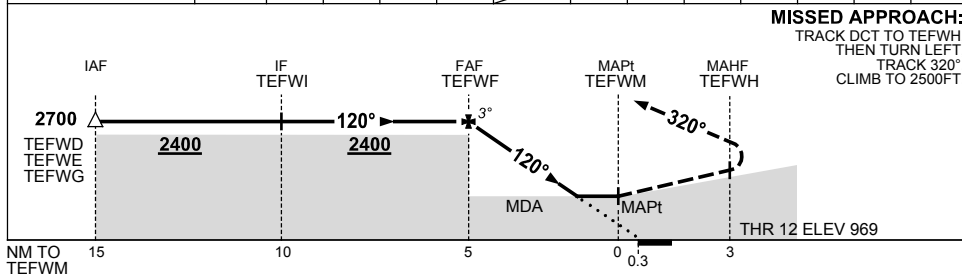
USE QNH

RNAV-Z (GNSS) RWY 12  
TELFER, WA (YTEF)

25 MAR 2021



|                    |       |      |      |      |      |       |  |  |  |  |  |  |  |
|--------------------|-------|------|------|------|------|-------|--|--|--|--|--|--|--|
| NM TO NEXT WPT     | TEFWF | 4    | 3    | 2    | 1.6  | TEFWM |  |  |  |  |  |  |  |
| ALT (3° APCH PATH) | 2700  | 2380 | 2060 | 1740 | 1610 |       |  |  |  |  |  |  |  |



**MISSED APPROACH:**  
TRACK DCT TO TEFWH,  
THEN TURN LEFT,  
TRACK 320°,  
CLIMB TO 2500FT.

| CATEGORY  | A              | B | C              | D                 |
|-----------|----------------|---|----------------|-------------------|
| LNAV      | 1610 (640-3.6) |   |                | NOT<br>APPLICABLE |
| CIRCLING* | 1770 (800-2.4) |   | 1870 (900-4.0) |                   |
| ALTERNATE | (1300-4.4)     |   | (1400-6.0)     |                   |

- NOTES**
- MAX IAS:  
INITIAL : 210KT.
  - CAUTION:** CHECK WITH UNICOM FOR BLASTING TIMES.
  - NO CIRCLING SW OF RWY 12/30.

Changes: TRACKS.

TEFGN01-166