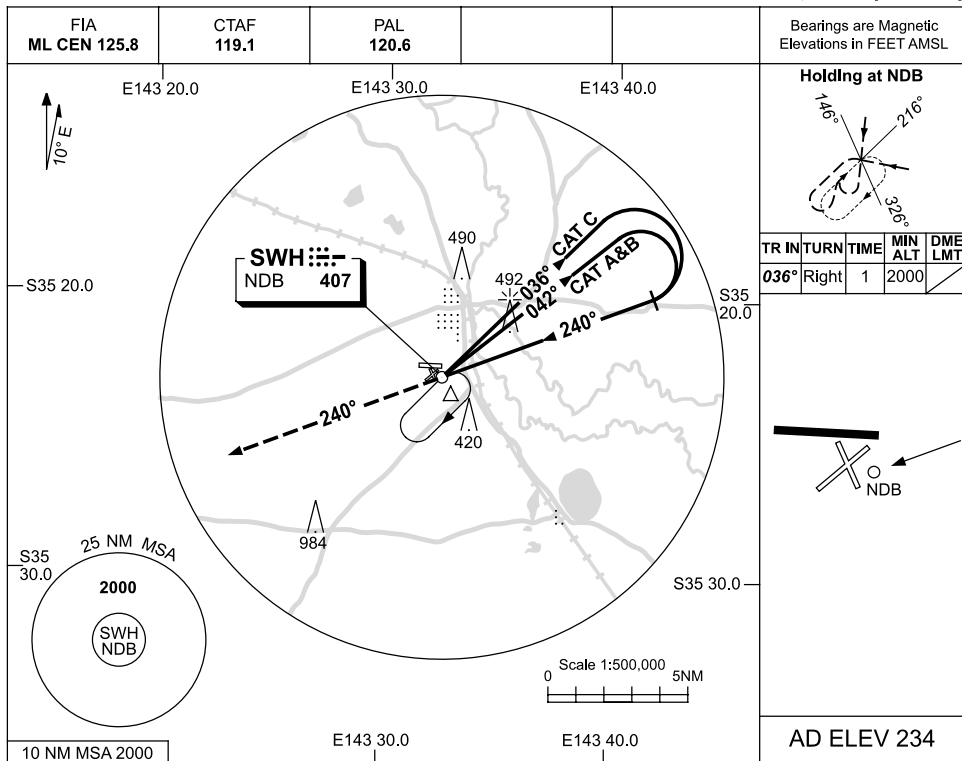


USE QNH

NDB-A

19 NOV 2009

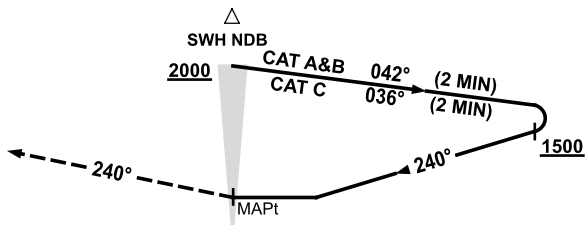
SWAN HILL, VIC (YSWH)



DME DIST	NOT APPLICABLE			
ALT				

MISSED APPROACH:

TRACK 240°.
CLIMB TO 2000FT.



NOTES

1. MAX IAS:
INITIAL : 210KT.
2. AWIS (PHONE)
03 5032 3396

CATEGORY	A	B	C	D
				NOT APPLICABLE
CIRCLING	890 (656-2.4)		1060 (826-4.0)	
ALTERNATE	(1156-4.4)		(1326-6.0)	

Changes: AWIS PHONE NO.

SWHNB01-121