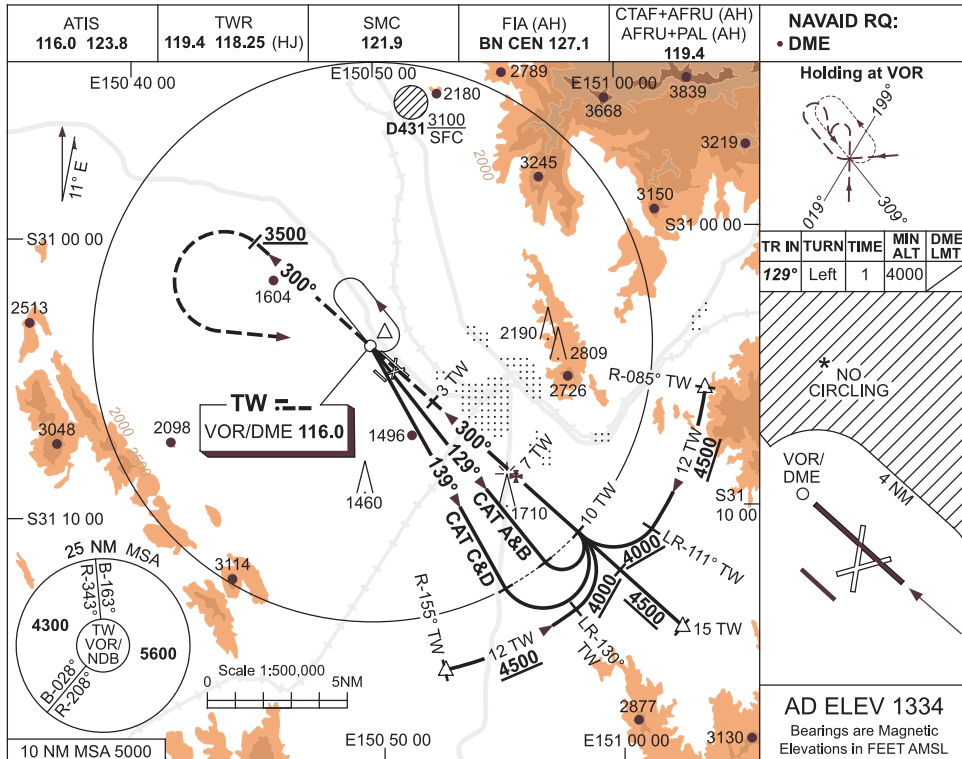


USE QNH

VOR RWY 30R  
TAMWORTH, NSW (YSTW)

26 MAY 2016



**Holding at VOR**

TR IN	TURN	TIME	MIN ALT	DME LMT
129°	Left	1	4000	

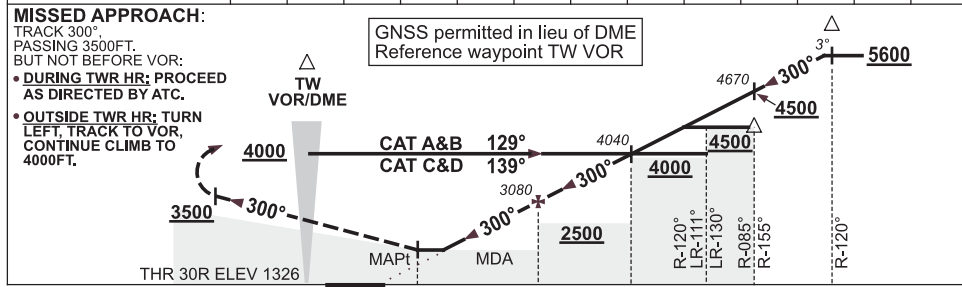
**NO CIRCLING**

VOR/DME

AD ELEV 1334

Bearings are Magnetic Elevations in FEET AMSL

DIST BY TW DME	3.6	4	5	6	7	8	9	10	11.5	12	13	14	14.9
ALT (3° APCH PATH)	1990	2130	2440	2760	3080	3400	3720	4040	4500	4670	4990	5310	5600



- NOTES**
- MAX IAS: INITIAL : 210KT. HOLDING: 210KT.
  - CAT A & B & C NO CIRCLING NE OF RWY 12L/30R BEYOND 4NM. MAX IAS 170KT.
  - CAT D NO CIRCLING NE OF RWY 12L/30R.
  - COLOUR: SEE SPEC NOTICES.

CATEGORY	A	B	C	D
S-I VOR/DME	1990 (664-3.8)			
CIRCLING *	2110 (776-2.4)	2400 (1066-4.0)	2400 # (1066-5.0)	
ALTERNATE	(1276-4.4)	(1566-6.0)	(1566-7.0)	

Changes: R547 DELETED.

STWV002-147