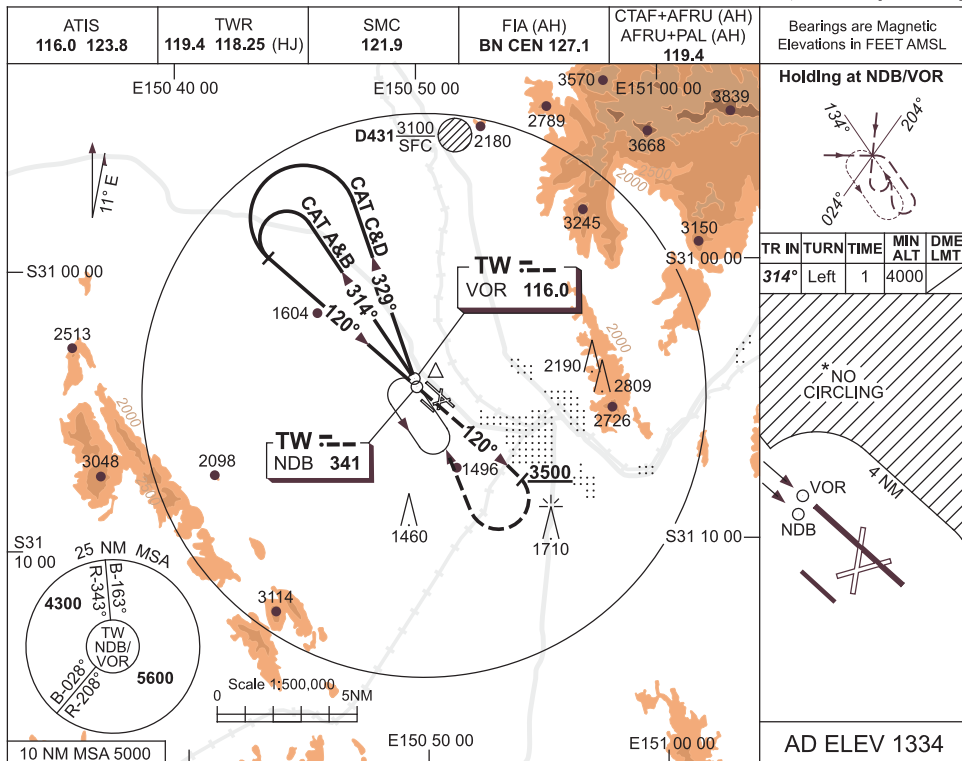


USE QNH

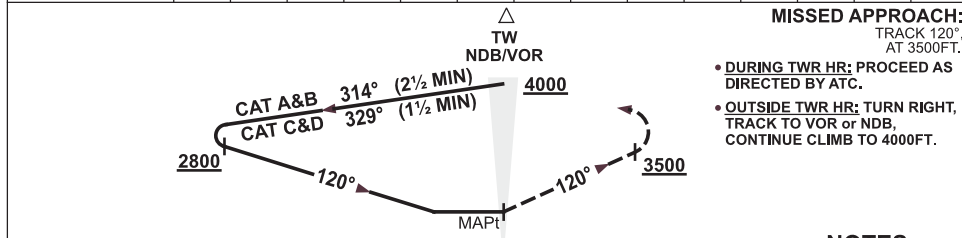
NDB-A or VOR-A

26 MAY 2016

TAMWORTH, NSW (YSTW)



DME DIST	NOT APPLICABLE			
ALT				



NOTES

1. MAX IAS:
HOLDING: 210KT.
INITIAL:
CAT C&D 185KT.
- *2. CAT A,B&C NO CIRCLING NE OF RWY 12L/30R BEYOND 4NM. MAX IAS 170KT.
3. CAT D NO CIRCLING NE OF RWY 12L/30R.
4. COLOUR: SEE SPEC NOTICES.

CATEGORY	A	B	C	D
CIRCLING *	2170 (836-2.4)	2400 (1066-4.0)	2400 # (1066-5.0)	
ALTERNATE	(1336-4.4)	(1566-6.0)	(1566-7.0)	

Changes: R547 DELETED.

STWNB01-147